



312. **XVIII Olympiad Special Delegates Awarded Badge.** Gilt, 50x67mm surrounded by Olympic colors. "XVIII Olympiad" on red bar, with sand color ribbon, Elbel S-13. Housed in its leatherette case, VF+. Badge EF. **(\$1,200)**
- 312a. **Organizing Committee Official's Badge.** Gilt, dark blue enamel, 37x60mm. With white ribbon one stripe in center. Elbel S-18. Rubbing on round center sun, VF. **(\$500)**
313. **The Olympic Cup Awarded To Tokyo by the IOC (1965).** Bronze plaque, 50x72mm, by Huguenin. The Olympic Cup created by Pierre de Coubertin. Rev. Olympic rings above 8-line legend in French "The Olympic Cup Created by Baron/Pierre de Coubertin/Renovator of the Modern Era Olympic Games, has been Awarded to the City of Tokyo". *The Olympic Cup has been awarded since 1906; it is being kept at the Olympic Museum in Lausanne, and the names of the recipients are engraved on a plaque on the trophy. Tokyo was awarded the Cup for Organizing the 1964 Olympic Games. Lennartz-Borger-Höfer pages 428-430. The city of Tokyo received only commemorative plaques.* Case inscribed in Japanese, VF. Plaque toned EF. **(\$900)**
314. **Participation Medal.** Copper, 61mm, by T. Okamoto/K. Tanaka. Stylized figures of three runners and swimmer. Rev. Olympic rings dividing English and Japanese legend in 6 lines. EF. **(\$260)**

315. **Presentation Medal for Olympic Flagbearers at the Opening Ceremony.** Silvered copper, 40mm, by Taro Okamoto and Kazumitsu Tanaka. Four athletes. Rev. Olympic rings between legend. Cased. EF. **(\$170)**
316. **Set of Three Commemorative Gold, Silver and Bronze Medals.** Gold 25mm, 18 Karat, 7.25 grams, silver and bronze medals 30mm each. Five runners. Rev. Tokyo 1964 logo. Cased, with brochure. EF. **(\$400)**
317. **Commemorative Tokyo Torch Relay Medal.** Bronze, 53mm. Torchbearer with flaming torch to left, Mount Fuji in background. Rev. Palm branch and Japanese legend. EF. **(\$100)**
318. **Commemorative Torch Relay Medal 1964.** Goldplated copper, 60mm, issued by Japan Athletic Promotion Foundation, made by Mitsui Mining & Smelting Co. Two torchbearers, after an illustration on an ancient Greek jar. Rev. The Sendagaya Gate of the Olympic National Stadium. In white box with brochure, Tokyo color logo on top. Medal small spots, VF-EF. **(\$100)**
319. **Japanese Track & Field Pin.** Silvered, red and white enamel, 15x24mm. Mascot holding logo. EF. **(\$80)**
320. **Olympic Winner Wall Sculpture.** Black ceramic, 18cm (7.1"), 4.2cm high, with yellow cord. Laureated head left of Olympic winner, "Tokyo 1964 - XVIII Olympiad". Abt. EF. **(\$150)**
321. **Commemorative Seiko Alarm Clock.** Goldplated, 6.2cm (2.4") wide, 3.5cm (1.4") high. Top with discus thrower and "Tokyo 1964", opens to reveal clock, ancient Greek athletes surrounding sides. EF. **(\$120)**

**Please Bid Early!**



322



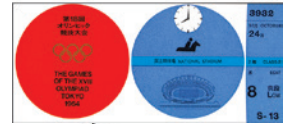
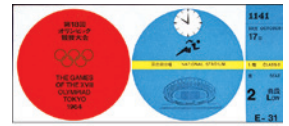
323



324



325



326



327



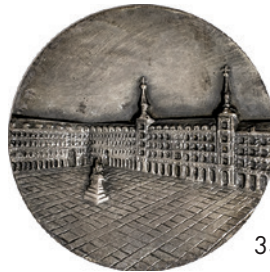
328



329



330



331



333



334



335



335

322. **Commemorative Winner's Medal Savings Bank.** Ceramic, 13.5x15cm (5.3"x5.9"). Victory seated above stadium. Rev. Winner carried by jubilant teammates. A few small chips, o.w. EF. (\$80)
323. **Tokyo 1964 Men's Athletics Titled 8mm Black and White Film.** In clear plastic case, 18.5cm (7.3") wide. EF. (\$80)
324. **Pair of Opening Ceremony Tickets, October 10, 1964, and Closing Ceremony Ticket, October 24, 1964, National Stadium.** 18.2x8cm (7.2"x3.2"). Temporary ticket has 3 creases, VF, two tickets EF. (3 pcs.) (\$140)
325. **Group of Four Tickets.** All 18x8cm (7.1"x3.2"). Athletics, October 17, creases; Equestrian, October 24, EF; Gymnastics, October 19, creased, VF; and Swimming, October 11, crease, EF. (4 pcs.) (\$150)
326. **Group of Three Official Athletics Programs, Numbers 2, 6 and 7, October 15, 19 and 20, 1964, National Stadium.** 64 pages each, 15x21cm (5.9"x8.3"), in Japanese and English. Covers abt. EF to EF, contents EF. (3 pcs.) (\$180)
327. **Fencing Official Program, October 13-23, 1964, Waseda Memorial Hall.** 111 pages, 15x21cm, in Japanese and English. Crease on cover, contents EF. (\$120)
328. **Pair of Official Swimming and Diving Programs, October 14 and 18, 1964, Nrs. 4 and 8, National Gymnasium.** 31 pages each, 15x21cm (5.9"x8.3"), in Japanese and English. Covers EF and VF/EF, inside EF. (2 pcs.) (\$140)
329. **Complete Set of Official Water Polo Programs, Numbers 1, 2 and 3, October 11-13, 14-15 and 17-18, 1964, Metropolitan Indoor Swimming Pool.** Each 15x21cm (5.9"x8.3"), 36pp. and 32pp. (26), in Japanese and English. *The Hungarian Team won gold with goalie Dezső Gyarmati.* Abt. EF to EF. (3 pcs.) (\$170)  
**For Water Polo Gold Medalist Dezső Gyarmatis Identity Card see lot 261.**

330. **Closing Ceremony Program, October 24, 1964, National Stadium.** 64pp., 14.5x20.7cm (5.7"x8.2"), in Japanese, English and French. Includes winners by country, by event, and detailed program of the closing ceremony. EF. (\$100)
331. **63rd IOC Session in Madrid, 1965. Official Medal for IOC Members.** Silver, 60mm. View of Madrid Plaza. Rev. Spanish NOC logo encircled by legend. Toned EF. (\$150)
- GRENOBLE, 10th OLYMPIC WINTER GAMES, 1968**
333. **Director of Organizing Committee Badge.** Gilt, 37x52mm. "C.O.J.O." on green bar. Elbel W-7. EF. (\$500)
334. **Guest of Honor Badge.** Gilt, 37x41mm. Elbel W-9. EF. (\$260)
335. **Group of Three Badges with Green Enamel: Organizing Committee, 37x52mm. Official, 35x49mm, and Public Services/Official Partners, 41mm.** All with attached color logo. Elbel W-11, 12 and 17. All EF. (3 pcs.) (\$400)



336. **Pair of Badges: Delegation and Press.** Delegation: blue and cream enamel, 35x49mm. Press: yellow, 35x45mm. Both with attached color logo. Elbel W-14 and 16. Both EF. (2 pcs.) (\$260)
337. **Group of Nine Great Britain Winter Participant Pins from Grenoble 1968 to 2006 Missing only 1976 and 1998.** All EF. (9 pcs.) (\$300)
339. **Opening Ceremony Ticket, February 6, 1968 15h (3pm).** Tricolor, 7x15.3cm (2.8"x6"), with tricolor cord. Small tear at bottom right, small spot. Abt. EF. (\$120)
340. **Ice Hockey Ticket, Match 9, Stade de Glace, February 1968.** 20.3x10cm (8"x3.9"). Light vertical crease, o.w. EF. Plus **Opening and Closing Ceremony Access Cards to the Presidential Tent, February 8 and 23, 1968.** 12x12cm (4.7"x4.7"). Unissued, both EF. (3 pcs.) (\$140)
341. **(Bid Book 1961) Oslo 1968 Olympic Winter Games. Oslo Welcomes You.** 54pp., b&w and color photos, in English and French. Bound in white leatherette, goldstamped. EF. (\$100)
- MEXICO CITY, 19th OLYMPIC GAMES, 1968**
342. **Official White Metal Torch with Black Leather.** Cast white metal, 45cm (17.7") tall. "MEXICO 68" around top, handle partially covered with black leather. *Used in the torch relay in Mexico, and this style was used in lighting the cauldron at the Opening Ceremony* EF. (\$2,800)
343. **Official Silver Torch.** Silver color, part of shaft made of wood, 53cm (21") high. Circle of doves around top. *Used in the torch relay in Mexico.* EF. (\$2,800)
344. **Official Black Torch.** Black painted aluminum, part of shaft made of wood, 52.8cm (20.9"). Silver colored doves around top. *The black torch was used in the torch relay from Olympia to Athens, Greece.* EF. (\$2,800)
345. **Shooting Trainer's Badge.** Gilt, red enamel, 37x63mm. With gray plastic ribbon. Elbel S-131. EF. (\$200)
346. **Group of Four Official Programs: Athletics,** October 13-20, 1968, 62 pages, and October 20, 1968, 30 pages. **Swimming and Diving,** October 18, 1968, 29 pages, and October 26, 1968, 24 pages. All EF. (4 pcs.) (\$120)
347. **Complete Set of Seven Swimming Programs, October 20-26, 1968.** Each 14 to 30 pages, 18x18cm (7.1"x7.1"). October 22 and 24 with scores. *Mark Spitz, USA and Roland Mattes, East Germany were taking part.* EF. (7 pcs.) (\$180)
348. **Group of 3 Identity Cards with Photos and a Temporary Pass to the Olympic Village.** 13.5x6.5cm (5.3"x2.6") and 9.5x13.7cm (3.7"x5.4"). Press, R.C. and TV; Czech Gymnastics and Olympic Village Passes. Plus a small keychain with Olympic Village logo. All EF. (5 pcs.) (\$120)
349. **(Bid Book 1961) Mexico Seat XIX Olympic Games (1968).** Text in French, English and Spanish. Unnumbered pages, illustrated in b&w and color. With separate brochure "Olympic Champions 1896-1964", by event. Leatherette covers with silver text, glassine dust jacket. EF. (\$120)
350. **Detroit 1968 Bid City Dish.** Brown and black glass with gold decor, 17.5cm (6.9"). Ancient Greek sports on scalloped border surrounding cauldron between Olympic rings and "Olympia". EF. (\$80)



351. **68th IOC Session in Warsaw, 1969. Official Medal.** Bronze, 60mm. Mermaid with shield and sword behind legend. Rev. Olympic rings over legend and Olympic motto. Toned EF. **(\$120)**

**SAPPORO, 11th OLYMPIC WINTER GAMES, 1972**

352. **Official Torch Used in the Torch Relay.** Bowl cast blackened aluminum alloy, 13x21cm (5.1"x8.3"), with stainless steel flame tube, total length 56cm (22"), designed by Munemichi Yanagi, made by Nippon Kokki Co. The bowl and the tube display the Sapporo Olympic emblem. Lt. wear to bowl, tube partially discolored from flame, VF-EF. Rare. **(\$28,000)**
353. **J.A.S.A. Badge and Photo Badge.** Both silver color, 37x59mm. Japanese Amateur Sports Association with blue enamelled bar, and Photo Badge with red enamel. Both with white ribbon, yellow center stripe. Elbel W-19 and 58. Both EF. (2 pcs.) **(\$900)**
354. **Organizing Committee Official's Badge.** Silvered, 37x59mm. "S.O.O.C. Official" on blue enamel. With white ribbon, yellow center stripe. Elbel W-26. EF, starting to tone. **(\$650)**
355. **Guest Badge.** Silvered, 37x59mm. "Guest" on light purple enamel. With white ribbon, yellow center stripe. Elbel W-23. EF. **(\$240)**
356. **Organizing Committee Ski Official's Badge.** Silvered, 37x59mm. "Official" on dark blue enamel. With green ribbon. Elbel W-34. EF. **(\$350)**
357. **Organizing Committee Badge.** Silvered, 37x59mm. "Committee" on dark blue enamel. With white ribbon, yellow center stripe, EF. Elbel W-15. VF+. **(\$400)**
358. **Skiing Official's Badge.** Silvered, green enamel, 37x59mm. With green ribbon. Elbel W-50. EF. **(\$300)**

359. **Press Badge and Radio & TV Badges.** Silvered, red enamel, 37x59mm. With white ribbons, yellow center stripe. Elbel W-59 and 60. Toned EF and EF. (2 pcs.) **(\$400)**
360. **Radio & TV Badge.** Silvered, 37x59mm. "Radio & TV" on red enamel. With white ribbon, yellow center stripe. Elbel W-60. EF. **(\$260)**
361. **Official Torchbearer Medal.** Bronze, 32x33mm. Cauldron with Olympic flame. Rev. Logo. Each torchbearer received one of these medals. Housed in its plastic case. EF. **(\$100)**
362. **Commemorative Cauldron Lamp.** Gold colored, 20cm (7.9") high, made by Sanyo. Shape of the Sapporo Olympic cauldron with official logo, on black base, with battery. EF. **(\$120)**
363. **Opening Ceremony Full Ticket, February 3, 1972, Makomana Speed Skating Rink, 11 am.** 20x8.5cm (7.9"x3.4"). "Entrance 4" almost detached. With original envelope, Abt. EF. **(\$100)**
364. **Group of Four Official Bobsleigh Programs: February 4 and 5, 2-man Bob, and February 11 and 12, 4-man Bob, Mount Teine Bobsleigh Course.** Each has 24 pages, 18x25.5cm (7.1"x10"), in Japanese and partially in English. All EF. (4 pcs.) **(\$260)**

**Bid Online, by Email, Mail or Phone!  
Closing Time on Saturday,  
April 22, 8 PM Pacific Time!**