



269



270



271



272



273



274



274



274



274



275



276



277



278



278



278



278

269. **First Class Olympic Order.** Goldplated, white enamel, 57x67mm. With loop and ring, and light blue ribbon bar with white stripes. EF. (\$400)
270. **Participation Medal.** Bronze, 54mm, by K. Räsänen. Stylized athletes' heads superimposed over the Olympic Stadium. Rev. Male and female athletes to left holding torches over Olympic rings. Toned EF. (\$180)
271. **Cycling Trainer's Badge.** Bronze, partially enamelled, 33x48mm. With brown ribbon inscribed "Pyörällä/Cyclisme/Entraîneur". Elbel S-171. EF. (\$170)
272. **Wrestling Judge's Badge.** Silvered, blue enamel, 33x48mm. With cerise colored ribbon inscribed "I.A.W.F./Tuomari". Elbel S-114. EF. (\$260)
273. **Wrestling Participant's Badge.** Bronze, partially enamelled, 33x48mm. With cerise colored ribbon inscribed "Paini/Lutte". Elbel S-199. EF. (\$170)
274. **Group of Four Helsinki 1952 Olympic Badges.** Bronze, partially enamelled, 33x48mm, with inscribed ribbons. **Modern Pentathlon Technician's Badge**, with red-violet ribbon; **Shooting Official's Badge** with olive-brown ribbon and paper envelope; **Fencing Participant's Badge** with lilac, lily faded ribbon; and **Press Badge** with yellow/black ribbon, light spots. Elbel S-212, 162, 190 and 62. Very nice group. (4 pcs.) (\$600)
- For Water Polo Gold Medalist Dezső Gyarmatis Identity Card** see lot 261.

275. **Dutch NOC Blue and White Porcelain Plate.** Handpainted, C.H. initials, Delft's blue. Rider on jumping horse over Finland. Olympic motto and rings above, "NOC" on ribbon of laurel wreath. Flower border with "XV Olympiade MCMLII" and "Helsinki". EF. (\$150)
276. **Final Results. Bulletin No. 16 of the Organizing Committee.** 106 pages illustrated, 21x29.5cm (8.3"x11.6"), in Finnish, French, English and Swedish. Very detailed, results for each participant. Cover sunned on left, otherwise EF. (\$90)
- CORTINA d'AMPEZZO,**
7th OLYMPIC WINTER GAMES, 1956
277. **Official Torch.** Aluminum, 47cm (18.5") long. "VII° GIOCHI OLIMPICI INVERNALI CORTINA 1956" legend, cut-out Olympic rings at top. *For the second Winter Olympic Torch Relay, the flame was lit at the Temple of Jupiter in Rome on January 22, 1956, and flown to Venice. The torch relay from there went to Cortina where the fire was lit in the stadium at the opening ceremony on January 26 by Guido Caroli.* Very scarce. VF. (\$20,000)
278. **Trio of Gold, Silver and Bronze Small Size Participation Medals.** All 40mm, by C. Affer. Female head facing, crowned by Olympic rings, flame in lower right. Rev. Snowflake superimposed on Mount Pomagagnon. All EF. (3 pcs.) (\$1,200)

Please Bid Early!



278a. **Interesting Group of Six Olympic Winter Participation Medals from Cortina 1956 to Lake Placid 1980.** Almost all bronze, 1976 silvered bronze and 1980 nickel-silver, 45mm to 76mm. 1972 Sapporo and 1980 Lake Placid in their presentation boxes. Plus Soviet team medal 1976. All EF. (7 pcs.) **(\$1,000)**

279. **International Olympic Committee Badge.** Maroon and white enamel, 40x49mm, made by Stabilimenti Artistici Fiorentini. Logo attached on maroon background, "C.I.O." at top. Elbel W-2. Housed in its maroon leather case. EF. **(\$1,800)**

280. **International Sports Federation Badge.** Dark yellow and red enamel, 40x49mm, made by Stabilimenti Artistici Fiorentini. Logo attached on yellow background, "F.S.I." at top. Elbel W-4. **Rarest of all Cortina badges with only 21 made. Housed in brown leatherette case, EF. Rare. (\$1,600)**

281. **Organizing Committee Badge and Assistant's Badge in their Original Envelopes.** Dark and light blue enamel, 32x54mm. Elbel W-14 (one of 72 badges only!) and W-16 (one of only 70 badges!). Both EF. (2 pcs.) **(\$600)**

282. **Guest Badge.** Gray enamel, 35x47mm. Elbel W-13. EF. **(\$180)**

283. **STOCKHOLM, 16th OLYMPIC EQUESTRIAN GAMES, 1956 Participation Medal.** Bronze, uniface, 42x50mm, by J. Sjösvärd. Ancient Greek horseman l. over Olympic rings, the official emblem of the Equestrian Olympic Games. *Due to long Australian quarantine requirements for horses another venue needed to be found – Stockholm.* EF. **(\$3,000)**

284. **Opening Ceremony Ticket June 10, 1956, 2pm, Olympic Stadium.** Price Kr. 15.-, Section K, Row 4. Very lt. vertical crease, o.w. EF. **(\$150)**

285. **Ticket. Olympic Grand Prix Jumping Competition and Closing Ceremony, June 17, 1956, Stadium.** Price Kr 25.-. Blue, 12x8.7cm (6.4"x3.1"). EF. **(\$150)**

MELBOURNE, 16th OLYMPIC GAMES, 1956

286. **International Olympic Committee President's Badge.** White enamel around goldplated center, 30x52mm. Color Olympic rings over flame on Australia on gold background in center, with white "President" bar. With white ribbon inscribed "International Olympic Committee" and short ribbon in Olympic colors. Elbel S-1. EF. Of utmost rarity, the only IOC badge from Melbourne available to collectors. **(\$50,000)**

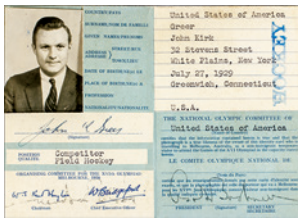
287. **Modern Pentathlon Mexican Team Badge.** Silver, 38mm. Color enamelled Mexican shield dividing "19-56", surrounded by legend VF-EF. **(\$300)**

287a. **Silver Medal Winner's Pin.** Silverplated, 13x15mm, rings gilt. And **Rome 1960 Bronze Medal Winner's Pin.** Bronze, rings gilt, 13x15mm. Both numbered, in black plastic wallets. Both EF. (2 pcs.) **(\$150)**

288. **Japanese Team Pin.** Silvered, 23x20mm. Red and white enameled Japanese flag between legend. Toned EF. **(\$100)**



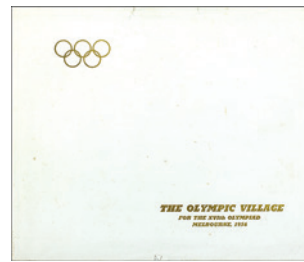
289



290



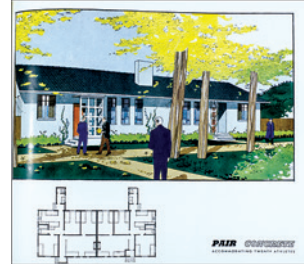
290



291



292



297



293



294



295



296



298



299

- 289. **Cuban Mascot Wearing Medal.** Multicolor hard rubber, 22cm (8.7") tall. Smiling athlete wearing proudly his medal. EF. Rare. (\$200)
- 290. **Identity Card of an American Field Hockey Competitor.** 4 pages, 8x11.2cm. Covers browning, inside EF. Plus Press Seat Pass of the Swimming Stadium, a Ball and Pass Out card, and 2 Christian Witness Cards. All EF. (5 pcs.) (\$100)
For Water Polo Gold Medalist Dezső Gyarmatis Identity Card see lot 261.
- 291. **(Brochure) The Olympic Village for The XVIth Olympiad in Heidelberg, Victoria.** 16 pages including 11 in color, 28.5x24cm (11.2"x9.5"). Color renderings of 11 different buildings for the athletes which will be converted to housing after the Games, map of the Olympic Village and the later Housing. Covers small tears VF+, inside village brochure. EF. (\$150)
- 292. **(Bid Book) Los Angeles 1956 Summer Games.** Text in English. 14 unnumbered stiff pages plus copies of 4 letters to the IOC, illustrated in color. Glassine cover, spiral-bound. EF. (\$100)
- 293. **54th IOC Session in Tokyo, 1958. International Olympic Committee Badge.** Silvered, "IOC" gilt with red stone, 45x27mm. EF. (\$800)

SQUAW VALLEY, 8th OLYMPIC WINTER GAMES, 1960

- 294. **Participation Medal Housed in its Presentation Box.** Bronze, 50mm, made by the Herff Jones Company. Large logo with Olympic rings. Rev. Hand holding flaming torch. In presentation box. Medal EF. (\$600)
- 295. **Participation Medal.** Bronze, 50mm. Hand holding torch. Rev. Logo encircled by Games legend. Toned EF. (\$500)

- 296. **Official Japanese Olympic Film Crew Badge.** Silvered copper, 43x61mm. Logo, skater, ski jumper and Japanese legend above. Rev. Japanese legend (translated) "1960 Winter Olympic Games, Olympic full color movie by Ashsahi Shimbun & Daiwa Films". With bar and black ribbon. Boxed. EF. (\$650)
- 297. **Logo Badge.** Tricolor logo, 24x30mm. With "Squaw Valley Olympics 1960" legend. EF. (\$90)
- 298. **Large Commemorative Tray with Logo and Three Winter Sports.** Special black hard plastic inlaid design in color and gold, 39.2x27.2cm (15.4"x10.7"). Color logo surrounded by skier, ice hockey player and skater, inlaid by hand by skilled craftsmen. Maker's descriptive sticker on back. EF. (\$200)
- 299. **Valley Daily Pair of Tickets, Days 3 and 6, February 20 and 23, 1960, Price \$7.50 each.** Red, blue and white, 49x90mm. *Carol Heiss won figure skating gold on February 23.* Both EF. (2 pcs.) (\$130)

**We Always Service Want Lists –
Please let us know what you
are looking for!**



300



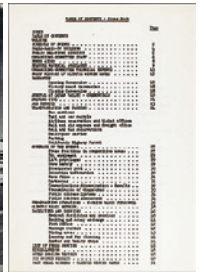
301



302



302



303



304



304a



305



306



307



309



311



308



310

300. **Group of 7 Official Daily Programs, Feb. 18 Opening Day, 21-23, 25-29, 1960, Numbers 1, 4-6, 8-10.** 12.2x17.8cm (4.8"x7"). All EF. (7 pcs.) (\$220)
301. **Official Credential of a Soviet Speed Skater.** 13x7cm (5.1"x2.8") housed in a brown wallet. VF-EF. (\$100)
302. **Pair of Brochures.** Both 21.8x28cm (8.6"x11"). VIII Olympic Winter Games Booklet with all **Telephone Numbers** for the Games. 28 pages of numbers for everybody involved with the Games. Plus **Information for Press, Radio, and TV**, February 18-28, 1960, 54 pages of information. Both EF. (2 pcs.) (\$140)

ROME, 17th OLYMPIC GAMES, 1960

303. **Official Torch.** Bronzed aluminum, 39.5cm (15.5"), designed by Professor Maiure and his team from the National Museum of Archeology in Naples. The design is based on drawings of torches on ancient Etruscan ceramics. Toned EF. (\$7,000)
304. **Organizing Committee Executive Badge.** Bronze and gilt, 45x51mm. With double olive wreath and blue enamel. Elbel S-4. One of only 65 badges. Glue stains on back. EF. (\$950)

- 304a. **Participation Medal.** Cast bronze, 55mm, by E. Greco. Nude female torchbearer l. superimposed over Olympic rings. Rev. Flight of eagles soaring over stadium of Rome. EF. (\$260)
305. **Oil Painting of Wilma Rudolph, Winner of 3 Gold Medals in Athletics.** Multicolor, 54x69.2cm (21.3"x27.2"). Painted by Carol Scott. Wilma running towards victory, her 3 gold medals at lower right, Rome Coliseum Olympic Stadium in background. *Wilma, who had polio as a child and needed to wear leg braces, won gold in 100-Meters, 200-Meters, and in the 4x100 Meter Relay.* Mounted in a red frame. EF. (\$100)
306. **South African Team Patch in Rome 1960.** Embroidered fine green cotton, 13.2x19.5cm (5.2"x7.7"). Springbork between legend, housed in wooden frame. *Because of the apartheid politics – south Africa was boycotted between 1964 and 1988. They resumed their Olympic participation since 1992.* EF. (\$80)
307. **Official Poster with Hindi Language.** Brown and gold, 66.5x93cm (26.2"x36.6"), designed by A. Testa, printed by I.G.A.P., Milan and Rome. The Roman she-wolf on column featuring a victorious Roman athlete crowning himself. Olympism pp. 72/73. Cut and reassembled in several places, small holes, browning. Under glass in brass frame. Fine. (\$100)

INNSBRUCK, 9th OLYMPIC WINTER GAMES, 1964

308. **Japanese Team Pin.** Silvered, white and red enamel, 23x20mm. Japanese flag and "1964" between "Japanese Delegation" and "IX Olympic Winter Games". Scarce. EF. (\$90)
309. **Official Results.** Color-coded pages for each event, 21x29.6cm (8.3"x11.7"). Spiral bound with red translucent plastic cover. EF. (\$100)
310. **Trainer's Badge of the Fourth World Winter Games for the Handicapped.** Celluloid, 40mm. Olympic rings above partial Olympic rings. EF. (\$100)

TOKYO, 18th OLYMPIC GAMES, 1964

311. **Official Torch.** The bowl is made of blackened aluminum alloy, 16.8cm (6.6") wide. The cylinder is clad with stainless steel, length 64.8cm (25.5"). Bowl is inscribed "XVII Olympiad Tokyo 1964" and Olympic rings. The bottom of the cylinder features the Tokyo official logo. Unused, EF. (\$15,000)

Thank You for Participating at
auctions.ioneil.com