



32



33



34



32. **Albertville 1992 Winter. Official Torch.** Steel, 42cm (16.5"), up to 8cm (3.2") wide, designed by famous French designer Philippe Starck. The torch, when turned over, has the shape of a flame. The flame was lit in Olympia on November 27, 1991, when the relay through Greece started. It left Greece on December 8 on the Concorde to visit about 70 countries and islands worldwide, to arrive in Paris on December 14. 5,500 torchbearers carried the flame 5,536 km (3,440 miles) around France to Albertville where the cauldron was lit at the opening ceremony on February 8, 1992, by Michel Platini and Francoise-Cyrille Grange, a Savoyard girl. One of only 130 torches. Numbered. EF. Rare. (\$65,000)
33. **Lillehammer 1994 Winter. Silver Second Place Winner's Medal Awarded for Luge, Double Men.** Bronze and Norwegian granite sparagmite stone, 80mm (3.2"), by Ingierd Hanevold. Olympic rings and stylized ice crystal frame attached to sparagmite stone. Rev. Luge besides ice crystals and logo, event engraved on stone, winning "Luge – Double Men" inscribed. EF. (\$15,000)

34. **Salt Lake City 2002 Winter. Cased Bronze Third Place Winner's Medal Awarded for Luge, Women's Singles to Silke Kraushaar, Germany.** Bronze, 78mm, irregular shape made by O.C. Tanner. Athlete holding up torch emerging out of flames, Olympic rings below. Rev. Female holding olive leaf, luge event in background, event engraved on outer edge. With purple-blue ribbon, in fitted large wooden case, wear on inside, bronze Olympic rings affixed on top. In leather pouch with 2002 logo. Silke Kraushaar won gold in Nagano 1998 and silver in Torino 2006. She also placed first in the 1999 and 2001 World Cups, and second in 2000. EF. (\$18,000)



35



36



37



38



39



39a



40



41

35. **Rio de Janeiro 2016. Gold First Place Winner's Medal.** Goldplated silver, 8.5cm (3.3"), weight about 500 grams (17.6 ounces), obverse by Elena Votsi and Kostas Kazakos. Winged Nike, Goddess of Victory, over the Panathinaiko Stadium in Athens, the Acropolis in background. Rev. The Rio 2016 Olympic logo. With multicolor ribbon. Unawarded. Unc. (\$20,000)
36. **Rio de Janeiro 2016. Silver Second Place Winner's Medal.** Silver, 8.5cm (3.3"), weight about 500 grams (17.6 ounces), obverse by Elena Votsi and Kostas Kazakos. Winged Nike, Goddess of Victory, over the Panathinaiko Stadium in Athens, the Acropolis in background. Rev. The Rio 2016 Olympic logo. Award legend on edge. With multicolor ribbon. Unawarded. Unc. (\$19,000)
37. **Rio de Janeiro 2016. Bronze Winner's Medal.** Bronze, 8.5cm (3.3"), weight about 500 grams (about 16 ounces), obverse by Elena Votsi and Kostas Kazakos. Winged Nike, Goddess of Victory, over the Panathinaiko Stadium in Athens, the Acropolis in background. Rev. The Rio 2016 Olympic logo. With green and multicolor ribbon. Unawarded. Unc. (\$18,000)

THE OLYMPIC MASCOT COLLECTION OF SID MARANTZ

38. **Lumpi- First Version of the Munich 1972 Mascot.** Brown leather beanbag style, 8.5cm (3.4") wide, 11.2cm (4.4") tall, made by Knautschi, West Germany. Lumpi is sitting on his front paws, large ears, carrying a white leather sign. Plus Bavarian Lion with Olympic Beer Stein. 17cm (6.7") tall. Lion holding beer stein with Olympic rings between "Prost-1972", and a radish. Both EF. (2 pcs.) (\$120)
39. **Innsbruck 1976 Winter. Large Plush Mascot Schneemandlerl ("Snowman").** 34cm (13.4") tall. He is wearing a red felt hat and has an orange "carrot" nose. Very rare size. Abt. EF. (\$400)
- 39a. **Innsbruck 1976 Winter. Mascot Sonnenweiberl (Sun Wife), Wife of the Schneemandlerl (Snowman).** Multicolor rubber, 12.5cm (4.9"). Sun face, with welcoming arms. In Auction 92 we sold a large plush version. EF. (\$200)
40. **Montreal 1976. Large Plush Mascot Amik the Beaver.** Black plush with red sash, 57cm (22.4") long, made by Mighty Star Ltd. The red sash displays a white Montreal logo and is fastened by pins. Extremely rare. EF. (\$700)
41. **Montreal 1976. Large Amik the Beaver Mascot Savings Bank.** Black plastic, 40cm (15.8") long. White Montreal Olympic logo on red sash. Light wear, VF-EF. (\$200)



42. **Los Angeles 1984. Los Angeles 1932 Terrier Dog Mascot.** Long haired gray “fur” with large white felt patch inscribed Olympic rings over “Mascot”, “LA 1932”. *Made for the 1984 Los Angeles Olympic Games. A terrier dog was considered a mascot of the 1932 Olympic Village.* EF. (\$120)
43. **Chamois Mountain Goat – First Mascot of the Albertville 1992 Olympic Winter Games.** Plush, about 30cm (11.8”) tall, created by illustrator Michel Pirus. Extremely rare. EF. (\$300)
44. **90th Anniversary of the St. Louis 1904 Games – Limited Special U.S. Edition 1994 of a Plush Steiff Bear.** Brown plush. 43cm (17”) tall, handmade by Steiff. Louis Teddy Bear wears a replica of the 1904 Grand Prize Award Medal of the Fair, Steiff button in ear. EF. (\$260)
45. **Very Large Plush Snooble the Snow Weasel, First Official Nagano 1998 Mascot.** Red and yellow plush, 53cm (20.9”) tall, designed by Susumu Matsushita. Snooble wearing red shirt with Nagano bid logo, red and yellow hat, yellow scarf and red boots. Extremely rare. EF. (\$700)

46. **Group of 4 Official Nagano 1998 Snowlet Mascots: Sukki, Nokki, Lekki and Tsukki.** Multicolor plush, each about 14cm (5.5”) tall. Delightful mascots representing snowy owls of the Nagano area. All EF. (4 pcs.) (\$100)
47. **Large Sydney 2000 Paralympic Mascot Lizzy, the Frill-Necked Lizard.** Orange and green plush, 42cm (16.5”). The frill is green and gold in the shape of Australia. EF. (\$150)
48. **Karak, Official Mascot of the Melbourne 2006 Commonwealth Games.** Plush, 50cm (19.7”). EF. (\$100)
49. **Mascot Dony of the 2009 East Asian Games in Hongkong.** White plush, 34cm (13.4”). Fire-topped, lion-like Dony who had a sibling named Ami. EF. (\$80)
50. **Wenlock and Mandeville – The Mascots of the London 2012 Olympic and Paralympic Games.** Plush, 30cm (11.8”) each. Both EF. (2 pcs.) (\$120)
51. **Yoggl, the Chamois Mascot of the Innsbruck 2012 Youth Olympic Winter Games.** Brown plush with colorful attire, 37cm (14.6”) tall. EF. (\$100)
- See also lots 436, 457, 458, 463, 493, 498 and 500 Part of the Sid Marantz Collection.

Please Bid Early!



52



53



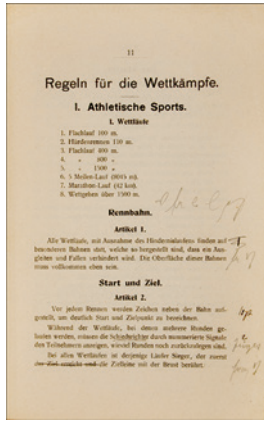
54



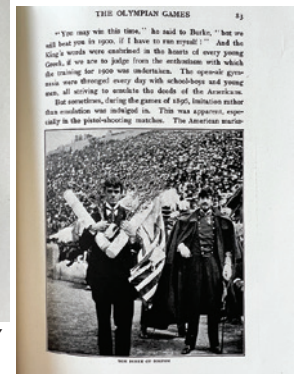
55



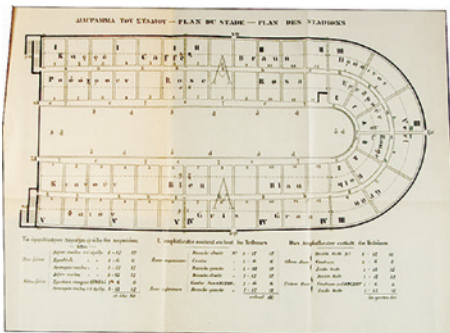
55



57



56



THE MODERN OLYMPIC GAMES SECOND NATIONAL GREEK OLYMPIC GAMES, ATHENS, 1870

52. **Bronze Winner's Medal.** Copper, 41mm, by Barre. Bust r. of King George. Rev. "Olympia in Athens 1870" surrounded by "Consecrator of Games Evangelis Zappas" (translated from Greek) and open olive wreath. *E. Zappas financed the National Greek Olympic Games.* Housed in its presentation case. Medal toned Unc. **(\$1,400)**

53. **Gold Participation Medal.** Goldplated bronze, 50mm, by N. Lytras. Seated Nike holding laurel wreath over phoenix emerging from flames, Acropolis in background. Rev. Greek legend in wreath. *Presented to high dignitaries.* Choice EF. **(\$1,200)**
54. **Commemorative Medal of the Olympic Games in Athens.** Silvered brass, 28mm, by Houtopoulos. View of 1896 Olympic stadium. Rev. Laurel wreath over "776 x 1896". *The Ancient Olympic Games started in 776 BC.* Looped. EF. **(\$300)**
55. **Reglements (Kampfbestimmungen). Rules and Regulations in German: Athletics, Gymnastics, Fencing, Soccer, Lawn Tennis, Swimming, Rowing, Cycling.** Preface of Translator W. Gebhardt, Berlin, February 1906. 98 pages, 14.1x21.8cm (5.6"x8.6"). General rules are followed by detailed regulations for all sports, and all 21 addresses of foreign committees for the 1896 Olympic Games. A few comments in ink or pencil throughout. Covers detached, Fine, contents light browning, pages 65-98 detached from pages 1-64. Contents EF. Very rare. **(\$1,000)**
56. **(Brochure) Police Du Stade – The Stadium Police. Regulation of the Order Service at the Panathenaic Stadium During the Olympic International Games, Athens 1896.** 14 pages, 14.2x20.1cm (5.6"x7.9"), in French. Two fold-out pages tipped in at the end, in Greek, French and German showing the topographical diagram of the stadium and surroundings, and the stadium itself with zones, seats etc. Dated March 8, 1896 by N.C. Metaxas, chief general commander, and superintendent of the Olympic Games. The document was approved by the Crown Prince being the President of the Games. All security regulations for the stadium and all other Olympic venues are explained in detail. Covers loose, Fine, contents EF. Very rare. **(\$1,200)**
57. **Holmes, Burton. Travelogues.** Chicago – New York, 1919. 341 pages illustrated with many b&w photos, 17x25cm (6.7"x9.8"), bound in black leatherette. Includes on pages 5-112 a chapter "The Olympian Games of Athens", report on the 1896 and 1906 Games with photos. Covers poor condition, contents EF. **(\$150)**

Please Bid Early!