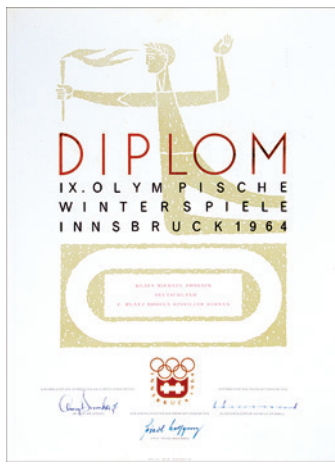




312



313



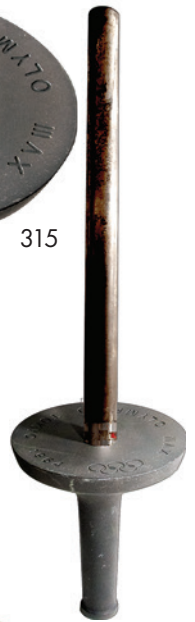
314



315



321



316



317



318



319



320



322



323



324



325

312. **Austrian Olympic Committee Olympic Flame Candle Holder.** Copper, 43cm (16.9") high. Three candle holders, the middle one as a flaming Olympic cauldron, with large attached Austrian NOC logo: "O.O.C." between Olympic rings and Austrian eagle. Very decorative. Abt. EF. (\$200)
313. **Second Place Winner's Diploma Awarded for Luge Men's Single to Klaus Bonsack, German Democratic Republic, on February 1, 1964.** Gold and light green, 34.4x46cm (13.6"x18.1"). First time luge was an Olympic event. EF. (\$450)
314. **Large Diploma for Roman Kiselev, Soviet Union, Ice Hockey Directorium LIHG.** Gold and blue, 34.5x46cm (13.6"x18.1"). The Soviet team won gold also in 1956, 1964-1976 and 1984-1992. EF. (\$260)

TOKYO, 18th OLYMPIC GAMES, 1964

315. **Official Torch.** The bowl is made of blackened aluminum alloy, 16.8cm (6.6") wide. The cylinder is clad with stainless steel, length 64.8cm (25.5"). Bowl is inscribed "XVII Olympiad Tokyo 1964" and Olympic rings. The bottom of the cylinder features the Tokyo official logo. Used in the torch relay, with partially burnt cylinder. VF-EF. (\$11,000)
316. **Special Delegates XVIII Olympiad Badge.** Gilt, 50x67mm. Surrounded by ribbons in Olympic colors, "XVIII Olympiad" inscribed on red bar below. With sand-colored ribbon. Elbel S-13. Housed in presentation case. Sm. spots on center, o.w. EF. (\$1,500)
317. **Organizing Committee Official's Badge.** Gilt, 37x60mm. With "O.O.C. Official" on blue bar, white ribbon with one gold stripe in center. Elbel S-18. Housed in presentation case, VF-EF. Badge EF. (\$400)
318. **XVIII Olympiad Special Delegation Badge.** Gilt, 37x60mm. With sand colored ribbon. Elbel S-20. EF. (\$150)
319. **International Sports Federation Jury Shooting Badge.** Goldplated, 37x60mm. With yellow bar inscribed "I.S.F. Jury". Elbel S-40. With orange double ribbon, 2 small holes, VF. Badge EF. (\$500)
320. **Boxing Participant's Badge.** Goldplated, 37x60mm. With lilac bar inscribed "Competitor", and double brown ribbon. Elbel S-114. EF (\$260)
321. **Pair of Badges: Organizing Committee Official (O.O.C.) and Press.** Gilt, 37x60mm each. Elbel S-18 and 26. EF and lt. rubbing, abt. EF. (2 pcs.) (\$300)
322. **Chinese Interpreter's Badge.** Goldplated, red and white enamel, 30mm. A very small number only served as Chinese interpreters. Housed in its wooden box. EF. Rare. (\$1,200)
323. **English Interpreter's "E" Badge.** Goldplated, red and white enamel, 30mm. A small number only of Tokyo high school girls served as English interpreters. Housed in its original wooden box with "Good-Will Guide/Badge" legend. EF. (\$140)
324. **German Interpreter's "D" Badge.** Goldplated, red and white enamel, 30mm. Housed in its wooden box with sleeve inscribed "Good-Will Guide/Badge". Box EF, sleeve VF-EF. Badge EF. Scarce. (\$160)
325. **Russian Interpreter's "P" Badge.** Goldplated, red and white enamel, 30mm. A small number only served as Russian interpreters. Housed in its wooden box. EF. Scarce. (\$200)



326. **Ghana Team Pin.** Multicolor, 19x25mm. EF. (\$150)
327. **Japanese Fencing Team Badge.** Silvered bronze, 21mm uniface. Fencer on medal suspended from "Tokyo – 1964" bar with Olympic rings and ribbon with 4 white stripes. With wooden box. EF. (\$200)
328. **Japanese Track & Field Pin.** Silvered, red and white enamel, 15x24mm. Mascot holding logo. EF. (\$70)
329. **Hongkong Team Pin.** Goldplated, 20x17mm. British lion between Hong Kong, Olympic rings and "1964" below. EF. Plus **Republic of Vietnam Team Pin.** Multicolor, 16x16mm. Olympic rings and flag between "Viet-Nam" and "1964 Tokyo". Small color chip, VF. Rare. (2 pcs.) (\$100)
330. **Set of Three Official Commemorative Gold, Silver and Bronze Medals.** Gold 25mm, 18 Karat, 7.25 grams, silver and bronze medals 30mm. Five runners. Rev. Tokyo 1964 logo. With brochure. Housed in white plastic case, gold and red logo on top. EF. (\$400)
331. **The Olympic Cup, Unissued Award Plaque of the IOC.** Bronze, 50x72mm, by Huguenin. The Olympic Cup. Rev. 7-line French legend, translated. "The Olympic Cup, created by Baron Pierre de Coubertin, the Renewer of the Olympic Games of the Modern Time, has been attributed to." EF. (\$500)
332. **Official Tokyo Metropolitan Olympic Police Bronze Medal.** Bronze, 50mm. Chrysanthemum flower with Olympic rings. Rev. Cauldron between Olympic events. EF. With brochure in Japanese, housed in white plastic case with color logo on top. Medal EF. (\$150)
333. **Olympic Cities from Athens 1896 to Tokyo 1964 Medal.** Goldplated aluminum, 9.7cm (3.8"). Discus thrower surrounded by Olympic cities 1896 Athens through Tokyo 1964. Rev. Japanese legend. EF. (\$150)
334. **Torchbearer Plaque in Wood-Like Frame.** Silvered, 20.5cm (8.1"), by Hata. Female with torch in flowing cloth to right, "XVIII Olympiad Tokyo 1964" and Olympic rings at right. EF. (\$120)



335. **Torch Relay Armband for Nakano, Tokyo.** Linen with red logo and black legend, 18.3x11.7cm (7.2"x4.6"). "Tokyo Olympic Torch Relay, Nakano" legend in Japanese. *Nakano is one of the major neighborhoods in Tokyo.* VF-EF. (\$120)
336. **Complete Set of the Four Official Tokyo 1964 Posters.** The **Official Logo Poster** was designed by Yusaku Kamekura, printed by Toppan Printing Co., Ltd., 55x101cm (21.7"x39.8"). Japanese red sun over Olympic rings and "Tokyo 1964". Creased at bottom. The next three posters are lined on linen, each 72.5x104cm (28.5"x40.9"): **The Torch Relay Poster** was designed by Yusaku Kamekura and Osamu Hayasaki. Torch runner to left, logo and legend below. **The Five Runners Poster** was designed by Yusaku Kamekura, Jo Murakoshi and Osamu Hayasaki. Five runners at the start, to the right, "Tokyo – 1964" and logo below. **The Swimmer Poster** was designed by Yusaku Kamekura, Jo Murakoshi and Osamu Hayasaki. Swimmer in pool, "Tokyo – 1964" and logo below. *Olympism through Posters (IOC, 1983), pages 78 – 81. Very rare as a set. All about EF. (4 posters) (\$1,200)*



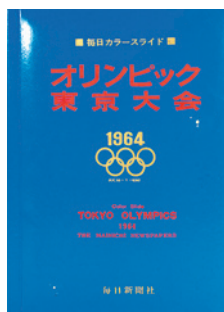
337



338



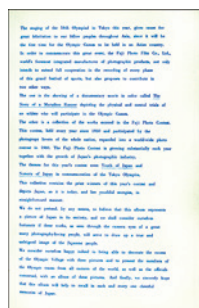
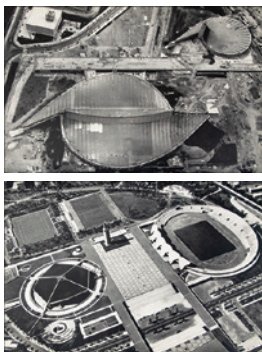
339



341



340



340



342



343



344



345



346



347



348

337. **Group of Three Rowing Programs, October 13, 14 and 15, 1964, Toda Rowing Course.** 38, 29 and 26pp., 14.9x21cm (5.9"x8.3") each, in Japanese and English. October 14 and 15 programs vertical crease, VF-EF, October 13 program EF. (3 pcs.) (\$150)
338. **(Brochure) Knecht, Willi. Die Geborstenen Ringe – The Broken Rings.** A study of the sport and political situation in Germany on the event of the XVIII Olympic Games 1964. 77pp. 16x23cm (6.3"x9.1"), in German. The problems between East and West Germany presenting, for the last time until 1992, a combined team. EF. (\$90)
339. **Album with 72 Color Slides of the Tokyo 1964 Olympic Games.** Blue covers, 6 pages with 72 color slides, 23x30cm (9.1"x11.8"), text in English and Japanese, published by the Mainichi Newspaper, Tokyo. Slides from Olympic venues, the Lighting of the Flame in Olympia, torch relay, opening, all events to the closing ceremony. Plus 52-page Color Slide Booklet with descriptions of all color slides in English and Japanese. Spiral-bound with blue padded covers, ltly. scuffed, contents EF. (\$100)
340. **(Book) In Commemoration of the Tokyo Olympics. Presented by Fuji Photo Film, Co., Ltd. to Participants and Officials of the Tokyo Olympic Games.** 136pp. of b&w and color photos of the Olympic venues, workers, youth, landscapes, sports etc. in Japan. Text in French, English and transcribed Japanese. Stiff covers VF-EF, contents EF. (\$100)
341. **Japanese Report on the Tokyo Olympic Games.** White linen, 733 pages with numerous full-page photos in color and black and white, 18x26cm (7.1"x10.2"). Includes coverage of all events, photos and information on the Japanese team, results for all participants in all events, information about medals, tickets, programs etc. EF. (\$180)

342. **Official Japanese Report on the Tokyo 1964 Olympic Games.** Blue linen goldstamped, with Tokyo logo, 22x30cm (8.7"x11.8"), illustrated profusely in color and b&w, in Japanese. From the construction of the venues to the Games and closing ceremony. EF. (\$200)
343. **64th IOC Session in Rome, 1966. Press Badge.** Silvered, blue enamel, 32x49mm, "Stampa" attached below. EF. (\$300)
- GRENOBLE, 10th OLYMPIC WINTER GAMES, 1968**
344. **Guest of Honor Badge.** Goldplated, 37x41mm. Elbel W-9. EF. (\$350)
345. **Organizing Committee Air France Airline Badge.** Silvered, 30x36mm. Logo above legend and rings. Elbel unlisted. EF. (\$200)
346. **Official Results.** Approximately 206 pages, color coded by event, 20.4x29.9cm (8"x11.8"). Stiff multicolor covers. EF. (\$120)
- MEXICO CITY, 19th OLYMPIC GAMES, 1968**
347. **Official White Metal and Black Leather Torch.** Cast white metal, 45cm (17.7"). "MEXICO 68" around top, handle partially covered with black leather. Used in the torch relay in Mexico, and this style was used in lighting the cauldron at the Opening Ceremony. Scarce torch. EF. (\$3,000)
348. **Official Black Torch Housed in Original Container.** Black painted aluminum, part of shaft made of wood, 52.8cm (20.9"). Silver colored doves around top. The black torch was used in the torch relay from Olympia to Athens, Greece. EF. (\$2,000)



349



350



352



353



354



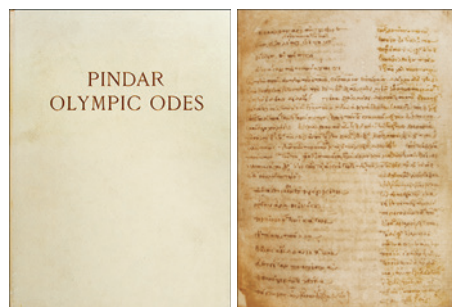
351



358



355



356



357



359



360

349. **Participation Medal.** Copper, 50x50mm, by Lance Wyman. Sports emblems. Rev. Legend EF/VF. Plus **Olympic Stadium Medal.** Cupro-nickel, 49x49mm. The Olympic Stadium. Rev. "Estadio 68". EF. (2 pcs.) (\$200)
350. **Set of Four Olympic Venue Medals: Olympic Stadium (Palace), Olympic Gym and Swimming Pool, Azteca Stadium and Sport Palace.** Silverplated, 50x50mm, made by Emaus. Three-dimensional view of the sport venues. Rev. Name of venue. Housed in its wooden case. EF. (\$200)
351. **Commemorative XIX Olympiad Mexico 1968 Bottle.** White and gray stone, 28cm (11") high, stopper on top. Raised design of ancient Greek discus thrower on front and back center, XIX Olympiad legend with dates. Unusual souvenir. EF. (\$150)
352. **Large Ornate Wall Plate Celebrating the 1968 Mexican Olympic Games.** Silver, red and gold colored aluminum, 43.5cm (17.1"). Mayan inspired design surrounded by Spanish gold legend celebrating the Mexico Olympic Games and "Call to the Youth of the World". EF. (\$150)
353. **(Book) Rules and Regulations for all Sports by the Organizing Committee.** Luxury edition, bound in leather, goldstamped, edges gilt, 377pp., 12x17.5cm (4.7"x6.9"), in Spanish. Rules of 19 sports, plus complete program by day and hour, list of Olympic Games and number of participants since 1896 etc. EF. (\$120)
354. **Group of Eight Official Programs: Basketball, Boxing, Equestrian, Modern Pentathlon, Volleyball, Water Polo, Weightlifting and Yachting.** 18x18cm (7.1"x7.1"), between 48 and 100 pages each, illustrated, in French, English and Spanish. A few with results written in. VF to EF. (8 pcs.) (\$200)

355. **Final Results of Games of the XIX Olympiad Mexico 68.** Two thick volumes, unnumbered pages, 15.7x21.7cm (6.2"x8.5"), in French, English and Spanish. Detailed results for each event by sports, for every participant. Corner crease on Volume I, o.w. EF. (2 pcs.) (\$150)
356. **(Book) Pindar Olympic Odes from the Vatican Library in Rome.** Facsimile copy published in 1968 by the Organizing Committee as part of the extremely rare Volume V of the Official Report. 174pp., 18.5x24.8cm (7.3"x9.8"). Abt. EF. (\$90)
357. **Participation Medal of the Ninth Commonwealth Games in Edinburgh, Scotland, 1970.** Bronze, 56mm. Crowned and dated 5-line legend in wreath of chains. Rev. Scottish lion surrounded by 8 coat of arms. EF. (\$80)

SAPPORO, 11th OLYMPIC WINTER GAMES, 1972

358. **News Film Badge.** Silvered, 37x59mm. "News Film" on red enamelled bar, with white ribbon, yellow center stripe. Elbel W-57. Housed in its presentation box. EF. (\$1,400)
359. **Press Badge.** Silvered, 37x59mm. "Press" on red bar, with white ribbon, one yellow center stripe. Elbel W-59. EF. (\$180)
360. **Pair of Badges: Team Official's Badge** with green inscribed bar, and **Radio & TV Badges** with red inscribed bar. No ribbons. Elbel W-46 to 50 and W-60. VF+, silver partially toned, and EF. (2 pcs.) (\$150)

Please Bid Early!