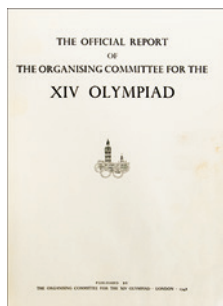


184. **Set of Four Stamps of the Amateur Fencing League, Part of the 1940 American Olympic Fund.** All in different colors, 35x30mm, printed by the American Bank Note Company. DuBois #18. Hinged, EF. (\$60)
185. **(Magazine) La Suisse. Nr. 6, June 1944.** Jubilee Olympique. Olympic Jubilee, Lausanne 1944. 40pp. illus. 24.5x33.6cm (9.6"x13.2"), in French and German languages. Incl. articles on Coubertin, the 50th anniversary of the restoration of the Olympic Games, celebrations in Lausanne, etc. Abt. EF. (\$100)
186. **ST. MORITZ, 5th OLYMPIC WINTER GAMES, 1948**
Participation Medal. Bronze, 40mm. by Wiederkehr. Olympic rings over French legend in five lines. Rev. Symbolic figure of Victory, mountain range in back. Toned EF, with presentation case, spotty and faded on top. Medal toned EF. (\$700)
187. **(Brochure) General Rules and Regulations and Program.** 32pp., 13.5x21cm (5.3"x8.3"), in French language. EF. (\$110)
188. **Official Daily Program, Nr. 3, February 1, 1948.** 9pp., 14.8x21cm (5.8"x8.3"), in German, English and French. Speed Skating, Hockey, Winter Pentathlon. Plus results of previous day. Color covers. EF. (\$100)
189. **Ticket. Figure Skating Compulsory, Women, February 4, 1948, Morning, Kulm Eisrink.** 85x30mm, vertical center crease, VF-EF. (\$150)

190. **Official Report.** Text in French. 78pp., illus., 17.3x24.5cm (6.8"x9.6"). The report was only published in French. Stiff covers. EF. (\$650)
191. **LONDON, 14th OLYMPIC GAMES, 1948**
Official Torch. Aluminum alloy, 47cm (18.5"). Cut-out Olympic rings over "XIVth Olympiad 1948. Olympia to London. With Thanks to the Bearer". EF. (\$7,500)
192. **National Olympic Committee Badge for Members and Secretaries.** Silvered, 32x48mm. With short ribbon in Olympic colors and light-yellow ribbon inscribed "National Olympic Committee" (weak legend). Elbel S-22. VF-EF. (\$400)
193. **Participation Medal.** Bronze, 50mm, by J. Pinches/B. MacKenna. City view of London over legend in three lines, Olympic rings below. Rev. Quadriga with triumphant winner dashing left. EF. (\$280)
194. **Lot of Seven Summer Participants Pins Presented by the IOC to Competitors at Olympic Games.** Bronze, 13x15mm. Numbered. Included are 1948, 1952, 1956, 1960, 1968, 1976 and 1980. All in their black pouches. All EF. (7 pcs.) (\$350)

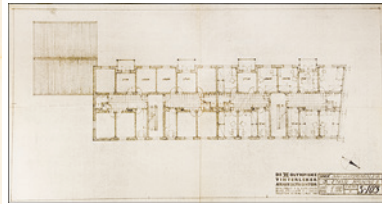
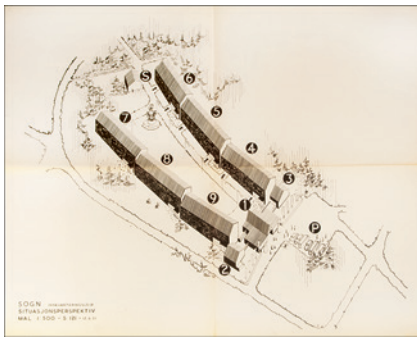


195. **Third Place Winner's Diploma Awarded to Lockwood M. Pirie, USA, for Yachting "Swallow" Class.** 53.8x42.2cm (21.2"x16.6"). Award legend between open laurel wreath, palm branches on either side. *The Swallow class was the only time contested in London 1948; it was the same size as the Star class, only with a smaller sail.* Wavy, lt. browning, small tear at bottom, VF+. (\$400)
196. **Group of 15 Tickets from London 1948 to London 2012.** Included are also Rome 1960, Mexico City 1968, Lake Placid 1980 Biathlon, Moscow 1980, Seoul 1988, Albertville 1992 (2), Lillehammer 1994, Atlanta 1996, Sydney 2000 (2) and Salt Lake City 2002. Almost all EF. (15 pcs.) (\$150)
197. **Report of the United States Olympic Committee, 1948 Games. XIV Olympiad London, England. V Olympic Winter Games, St. Moritz, Switzerland.** 387pp., illustrated throughout, 22x30cm (8.7"x11.8"). EF. (\$100)

198. **The Official Report of the Organizing Committee for the XIV Olympiad.** London, 1948. 580pp., illustrated with numerous plates. Contains a list of all badges issued, torch relay, etc. Green cloth, gold-stamped logo on cover, VF, contents EF. (\$200)

- OSLO, 6th OLYMPIC WINTER GAMES, 1952**
199. **Participation Medal Housed in its Presentation Box.** Copper, 56mm, by V. Falireus. Oslo Olympic emblem, a silhouette of the Oslo City Hall with superimposed Olympic rings. Rev. Olympic motto surrounding large snowflake. Toned EF. Very scarce with box. (\$700)
200. **Participation Medal of Tug Wilson, Future President of the U.S. Olympic Committee (1953-1965).** Copper, 56mm, by V. Falireus. Oslo Olympic emblem, a silhouette of the Oslo City Hall with superimposed Olympic rings. Rev. Olympic motto surrounding large snowflake. Toned, spots on obverse, EF. (\$500)
201. **Pair of Badges: Participant's Badge.** Silvered, light blue enamel, 31x37mm. Abt. EF. Plus **Guest Badge**, 31mm. Toned EF. Elbel W-7 and 11. (2 pcs.) (\$400)
202. **Scarce Group of Seven IOC Participation Pins from Seven Winter Olympic Games, Oslo 1952 to Albertville 1992.** Each goldplated, 14x19mm, numbered, in white plastic wallets. Included are Oslo 1952, Cortina 1956, Innsbruck 1964, Grenoble 1968, Innsbruck 1976, Sarajevo 1984 and Albertville 1992. *At the Tokyo 1990 IOC Session the IOC decided to present all past and future competitors in Olympic Games with a commemorative pin.* All EF. (7 pcs.) (\$400)

Bid Online, by Email, Mail or Phone!
Closing Time on Saturday,
April 24, 8 PM Pacific Time!



203



204



205



214



215



206



207



208



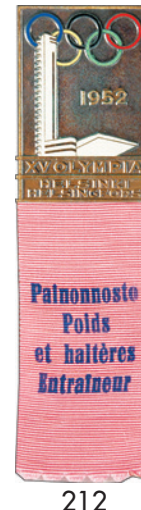
209



210



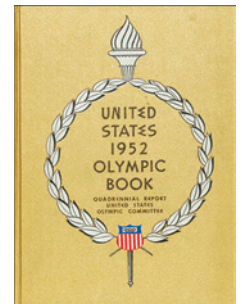
211



212



213



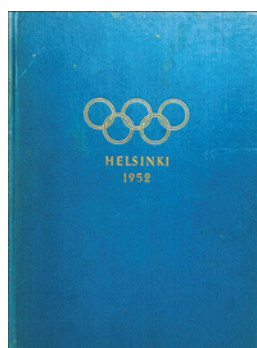
216

203. **Group of Four Architectural Plans for Housing of Athletes During the Oslo Olympic Games.** From 60x31cm to 62x97cm (23.6"x12.2" to 24.4"x38.2"). Four different plans, from the outside of the building to the inside showing each room. Folded, VF-EF. (4 pcs.) (\$120)

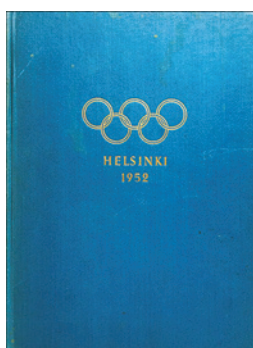
HELSINKI, 15th OLYMPIC GAMES, 1952

204. **First Class Olympic Order** Goldplated, white enamel, 57x67mm. With loop and ring, and light blue-ribbon bar with white stripes. Variety to be worn on suits. EF. (\$500)
205. **Participation Medal.** Bronze, 54mm, by K. Räsänen. Stylized athletes' heads superimposed over the Olympic Stadium. Rev. Male and female athletes to left holding torches over Olympic rings. EF. (\$150)
206. **Chef de Mission Badge of Future US Olympic Committee President Tug Wilson (1953-1965).** Silvered, dark blue enamel, 33x48mm. "Chef/de Mission" on green ribbon and short ribbon in Olympic colors. Elbel S-43. EF. (\$400)
207. **Chef de Mission Adjunct Badge.** Silvered, dark blue enamel, 33x48mm. With green ribbon inscribed "Chef/de Mission/Adj.", and short ribbon in Olympic colors. Elbel S-44. Ex: Tug Wilson. EF. (\$400)
208. **Secretariat's Badge.** Bronze, 33x48mm. With blue-white ribbon inscribed "Sihteeristo". Elbel S-58. EF. (\$150)
209. **Cycling Official's Badge.** Bronze, partially enameled, 33x48mm. With brown inscribed ribbon. Elbel S-154. (\$200)
210. **Modern Pentathlon Official's Badge.** Bronze, 33x48mm. With red-violet ribbon, inscribed. Elbel S-160. EF. (\$220)
211. **Shooting Official's Badge.** Bronze, 33x48mm. With olive brown ribbon, inscribed. Elbel S-162. EF. (\$200)
212. **Weightlifting Trainer's Badge.** Bronze, partially enameled, 33x48mm. With dark pink ribbon. Elbel-181. EF. (\$200)

213. **Fencing Technician's Badge.** Bronze, partially enameled, 33x48mm. With lilac inscribed ribbon. Elbel S-208. EF. (\$200)
214. **Complete Set of 16 Official Bulletins of the Helsinki XVth Olympiad, November 1949 – June 1952, Plus Nr. 16, the Official Results. Published by the Organizing Committee.** Numbers 1, 4 and 15 are in French, Nrs. 2, 3, 5-14 in English, Nr. 16 in Finnish, French, English and Swedish. Nrs. 1-15 are punchholed. Very scarce complete set. VF-EF to EF. (16 pcs.) (\$260)
215. **(Brochure) Final Results. Bulletin No. 16 of the Organizing Committee.** 106 pages illustrated, 21x29.5cm (8.3"x11.6"), in Finnish, French, English and Swedish. Very detailed, results for each participant. Cover sunned on left, otherwise EF. (\$100)
216. **Report of the United States Committee 1952 Games. XV Olympiad, Helsinki, Finland. VI Olympic Winter Games, Oslo, Norway, 1st Pan American Games, Buenos Aires, Argentina.** 452pp., profusely illustrated throughout, 22x30cm (8.7"x11.8"). Covers abt. EF, contents EF. (\$100)



217



218



219



220



222



222



224



223



221



217. **Official Report in Finnish. Helsinki, 1955.** Blue linen, cover a spine gilt legend, 768 pages, profusely illustrated, 21.7x29.5cm (8.5"x11.6"). Covers scuffed, contents EF. (\$150)
218. **Official Report in English. Helsinki, 1955.** Blue linen, goldstamped, 759 pages, profusely illustrated, 21.7x29.5cm (8.5"x11.6"). Very extensive report. Spine sunned, cover VF+, back spine loose, contents EF. (\$200)
219. **First Mediterranean Games in Alexandria, Egypt, 1951. Badge for Dignitaries including IOC Members.** Bronze, 27x43mm. Olympic rings above lighthouse and "Alexandria 1951". With long light violet velvet ribbon, and short gold thread ribbon, EF. Very rare. (\$200)
220. **Second Asian Games in Manila, 1954. NOC Badge.** Goldplated, blue and white enamel, 33x47mm. With silk ribbon inscribed "N.O.C.", lt. browning. Badge EF. (\$150)
221. **60th Anniversary Medal of the Restoration of the IOC Celebrated in Lausanne, Seat of the IOC, 1954.** Bronze, 40mm. Large Olympic rings surrounded by IOC Anniversary legend. Rev. View of the Lausanne Olympic stadium. EF. (\$80)
222. **Group of Four Pan American Games Badges from Tug Wilson, President of the U.S. Olympic Committee (1953-1965).** Mexico City, 2nd Pan American Games, 1955. NOC Badge. VF-EF. Chicago, 3rd Pan American Games, 1959. NOC Badge and Chef de Mission Badge. Both EF. Sao Paulo, Brazil, 4th Pan American Games, 1963. Chef de Mission Badge. Toned EF, ribbon abt. VF. Scarce group from an important U.S. Olympic Committee President. (4 pcs.) (\$400)

CORTINA d'AMPEZZO, 7th OLYMPIC WINTER GAMES, 1956

223. **Official Torch.** Aluminum, 47cm (18.5") long. "VII° GIOCHI OLIMPICI INVERNALI CORTINA 1956" legend, cut-out Olympic rings at top. For the second Winter Olympic Torch Relay, the flame was lit at the Temple of Jupiter in Rome on January 22, 1956, and flown to Venice. The torch relay from there went to Cortina where the fire was lit in the stadium at the opening ceremony on January 26 by Guido Caroli. Very scarce. VF. (\$19,000)
224. **Gold Participation Medal in Presentation Case.** Goldplated silver, 45mm, by C. Affer. Female head facing, crowned by Olympic rings, flame in lower r. Rev. Snowflake over Mount Pomagagnon. Housed in blue leather presentation case lined in blue velvet and silk, color rings attached on top. Rare presentation medal for high dignitaries. Medal EF. (\$2,400)

**We Always Service Want Lists –
Please let us know what you
are looking for!**