



144. **Interesting Group of 36 Tickets from 1932 Los Angeles to Rio 2016 with a Wide Variety of Sports.** Included are Los Angeles 1932, Berlin 1936 (2), London 1948 (4), Melbourne 1956 (2), Munich 1972, Los Angeles 1984 (with stamp), Seoul 1988 (with stamp), Atlanta 1996 (4), Beijing 2008 (3) and Rio de Janeiro (17 pcs). All EF. (36 pcs.) **(\$200)**
145. **Extensive Pictorial Report on the Participation of the Japanese Team in 1932 Los Angeles and Lake Placid Olympic Games.** Album-style linen cover, 252 pages of photos with descriptions, and 41 pages of text, 37.5x25.5cm (14.8"x10"), captions in Japanese. Ship travel to Los Angeles, arrival in the Olympic Village, the opening ceremony, the team participating in swimming, athletics, field hockey, etc., showing all Japanese team members for each sport, plus the return by ship to Japan. Additionally, 14 illustrated pages of the Japanese participation in Lake Placid. Linen covers soiled but contents are EF. Very interesting pictorial report. **(\$300)**
146. **Interesting Los Angeles 1932 Olympic Scrap Book Compiled by Physical Education Teacher Akie Sakumon from Fukuoka Prefecture, Japan.** About 70 pages, 22.5x30.5cm (8.9"x12"), with pasted-in documents in Japanese and English. Documentation of all requirements to visit the USA in 1932 (medical inspections, financial statements, school and prefecture statements etc.), his sea voyage on July 14 to 29 from Tokyo to Hawaii to Los Angeles and return, each lasting 15 days at sea, many daily radio news flyers of NYK Line in English and Japanese about world events, all receipts and information during his visit in Los Angeles including a very large fold-out map of Olympic venues, and final results in javelin,

- both in Japanese, a cover for a Barbecue Sandwich from the "Wich Stand", etc. Very interesting. VF+. **(\$260)**
147. **Complete Collection of the 39 Official Programs** of the Games of the Xth Olympiad, Los Angeles, USA 1932. Blue linen, gold design on cover, 19.3x27.3cm (7.6"x10.8"). All programs issued for Los Angeles bound together with their color covers. Linen covers scuffed, contents lt. browning, EF. **(\$500)**
- GARMISCH-PARTENKIRCHEN, 4th OLYMPIC WINTER GAMES, 1936**
148. **Silver Participation Medal.** Silverplated bronze, 60mm, by M. Joerres. Alpine summit over Olympic rings within German legend. Rev. Olympic motto over fir branches. Presented to high officials. Very rare. EF. **(\$1,600)**
149. **Japanese Skating Team NOC Badge.** Bronze, 39x36mm. Rings in Olympic colors above Brandenburg Gate, "1936" below, similar to the official German badges. With orange ribbon inscribed in Japanese "The 4th (Winter Games) Skate Team". Rare. EF. **(\$5,000)**
150. **Badge of Hungarian Ice Hockey Participant Miklos Sandor.** Bronze, 33mm, partially enameled in color. Numbered on back. Elbel W-4. EF. **(\$700)**

- BERLIN, 11th OLYMPIC GAMES, 1936**
151. **Official Torch.** Steel, 27cm high (10.5"), made by Krupp Factory, designed by Carl Diem. Route of torch run from Olympia to Berlin on shaft, legend on top. Carried during the first Olympic torch relay from Olympia, Greece to Berlin, a distance of 307 km in 12 days. EF. **(\$6,000)**



152. **Second Class Olympic Order.** Goldplated, white enamel, 53x57mm. With orange ribbon, 5 white stripes in center. EF. (\$400)
153. **Physician's Badge.** Silvered bronze, 41x43mm. Suspended from silver bar "Stab" and white ribbon with red cross. Elbel S-54. Ribbon badge lt. browning, EF. (\$950)
154. **Organizing Committee Staff Badge.** Bronze, 41x43mm. "O.K." at bottom, suspended from bar "STAB" and gray ribbon. Elbel S-53. EF. Rare. (\$1,200)
155. **National Olympic Committee Badge.** Silvered bronze, 41x45mm. With short ribbon in Olympic colors, and long dark blue ribbon inscribed "Nationales Komitee". *Badge for the Secretary General only.* Elbel S-4. EF. (\$800)
156. **Athletics Judge's Badge.** Silvered, 41x46mm. With orange inscribed ribbon. Elbel S-77. EF. (\$600)
157. **Basketball Participant's Badge.** Bronze, 41x46mm, numbered. With light green ribbon, inscribed. Elbel S-120. First time Basketball was part of the Olympic Games. Dr. J. Naismith, the inventor of basketball, presented the gold medal to the U.S. team. Ribbon stained, badge EF. (\$400)
158. **Boxing Team Leader's Badge.** Bronze, 41x46mm. With dark red ribbon inscribed "Boxen/Mannschafts-Führer". Elbel S-100. EF. (\$650)
159. **Press Badge.** Bronze, 41x46mm. With red-yellow ribbon. Elbel S-142. Spots on ribbon, badge EF. (\$400)
160. **Radio Badge.** Bronze, 41x46mm, inscribed "Rundfunk". With red-white ribbon. Elbel S-143. EF. Very scarce. (\$700)
161. **Swimming Participant's Badge.** Bronze, 41x46mm. With dark blue ribbon inscribed "Schwimmen" (Swimming, translated). Elbel S-135. EF. (\$500)

162. **Art Competition Participant's Badge.** Bronze, 41x46mm. With white ribbon, inscribed. Elbel S-138. With numbered envelope. EF. (\$400)
163. **Blue Companies Badge.** Dark blue bakelite with silver insert, 67mm, made by Walgo. Elbel p. 74. EF. (\$120)
164. **Service Staff Badge.** Red bakelite, 67mm, made by Walgo. Silver inlaid logo (rings over Brandenburg Gate) and number. Elbel #6. Scarce. EF. (\$150)
165. **Participation Medal Housed in its Presentation Case.** Bronze, 70mm, by O. Placzek. Five athletes representing the five continents, pulling the ropes of the Olympic Bell. Rev. Olympic Bell embossed with German Eagle holding Olympic rings, within five concentric circles. Housed in red cardboard box with gold bell on top, lt. scuffing. Medal toned EF. (\$300)

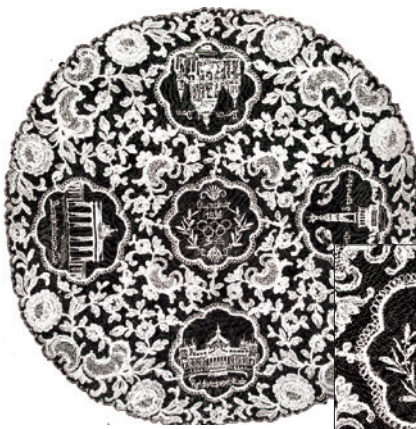
Please Bid Early!



166. **Japanese Team Medal.** Silvered bronze, 36mm. Athlete standing on globe holding flag, large Olympic rings in back. Rev. Berlin Olympic bell inscribed "1936" encircled by Japanese legend. Fob-style loop at top. Abt. EF. (\$150)
167. **Pair of British Team Pins. Berlin, 1936.** 20x25mm. Plus Melbourne, 1956; 25x30mm. Both EF. (2 pcs.) (\$300)
168. **Japanese NOC Pin.** Silvered, red and white enamel, 12x17mm. Olympic bell with color NOC logo, Olympic rings below. Housed in its original wooden box inscribed in gold. Rare. EF. (\$300)
169. **Yugoslavia Team NOC Pin.** Silvered, 16mm, buttonhole closure. EF. Rare. (\$120)
170. **Bronze Plaque Commemorating the Hungarian Homeing Pigeons at the Opening Ceremony.** Uniface, 57x82mm (2.2"x3.2"). Homeing pigeon on top of Hungarian double cross surrounded by Olympic rings with pigeons, "OLYMPIYA/1936" in Hungarian below. Rev. Inscription. Housed in presentation case, scuffed, plaque EF. Scarce. (\$200)
171. **Official City of Berlin Olympic Games 1936 Presentation Medal.** Cast bronze, 9.3cm (3.7"). High relief mural crowned city shield with high relief Berlin bear surrounded by German legend: "The Reich Capital City of Berlin, City of the Olympic Games 1936" (translated). Rev. Swastika above Olympic rings and Brandenburg Gate, 8-line German legend. In red presentation case lined with velvet and linen. EF. (\$200)
172. **Kiel Olympic Sailing Competition Official Car Plaque.** Silvered, enameled, 68x68mm. Kiel logo, rings above yachts, fish below. Black background, EF. (\$100)



173. **Japanese Team Belt Buckle.** Brass, 40x41mm, by S. Hata. Berlin Olympic bell between Japanese flags. Rev. Buckle closure and Japanese legend (translated) "1936 The 10th Olympic Games Participant's Fight for the Spirit/Glory". EF. (\$300)
174. **Olympic Bell and Reichsportfeld Meissen Porcelain Medal.** Brown, 11.5cm (4.5"). Large Olympic bell, symbol of the Berlin 1936 Games. Rev. Aerial view of the Olympic Stadium. EF. (\$200)
176. **Olympic Games 1936 Commemorative Meissen Porcelain Plate.** Blue and white porcelain, 17.5cm (7"), made by famous Meissen Porcelain Manufactory. Olympic rings and legend above quadriga with Victory on top of Brandenburg Gate in Berlin. EF. (\$300)
177. **Group of Six Sports Double Chocolate Molds Showing Athletes of the Berlin Olympic Games.** Three-dimensional aluminum, 11.5 to 13cm (4.5"x5.1") high. Included are Winner with wreath, Boxer (12.5 and 13cm), Soccer Player, Weightlifter and Wrestler. Molds open in the center for chocolate fillings. Included is the copy of a page from an Anton Reichl, Dresden catalog that shows the molds. Very unusual and rare group. VF to abt. EF. (6 pcs.) (\$450)



178



178a

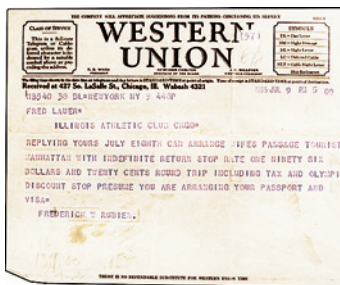


179



181

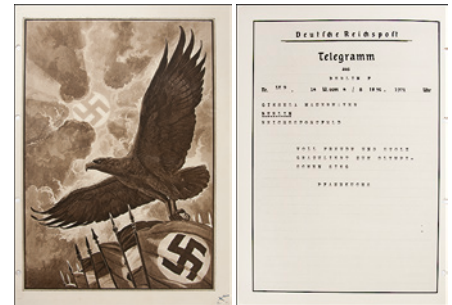
181



183



180



182



184

178. **Very Large Handmade Lace Doily Commemorating the Olympic Games in Berlin 1936.** Ivory color, 44.5cm (17.5"). "Olympiade 1936 Berlin" with Olympic rings in center surrounded by views of the Reichstag Building, the Victory Column, the Cathedral and the Brandenburg Gate. Intricate detail, very rare size. EF. (\$120)
- 178a. **Colorful Flags of the Participating Nations Wall Hanging.** Multicolor silk, 15.9x27.2cm (6.3"x10.7"). Olympic flag in center surrounded by flags of nations including China. Minor spots on r. side not affecting flags, o.w. EF. (\$120)
179. **Silver Second Place Winner's Diploma Awarded for Canoeing, Folding Kayak Pairs, 10000 Meters Won by Erich Hanisch, Germany, and his Team Member Willi Horn.** Gold embossed, 43x31.5cm (16.9"x12.4"), designed by Professor Ernst Boehm, Berlin, printed by Erasmusdruck, Berlin. Facsimile signatures of Organizing Committee President Lewald and IOC President Baillet-Latour. Embossed Olympic stadium between Brandenburg Gate and Olympic bell, on gold background. Won by Erich Hanisch, Germany, and his team member Willi Horn. The first place Swedish team won by only a few centimeters, after paddling 10000 meters! EF, matted, gold-framed. Beautiful diploma. (\$2,000)

180. **(Book) Rules and Regulations for 19 Sports plus the Art Exhibition.** 332pp., 13x19cm (5"x7"), in German. Program and rules for each sport, 10 large fold-out charts with illustrations for gymnastics, marathon, 50km walk and four for Kiel yachting events. Brown linen, EF. (\$200)
181. **Group of 8 Daily Programs Including All Track & Field Events with Jesse Owen's Gold Medal Wins, August 2 to August 9, 1936.** Bound with their pictorial covers in blue linen, gilt legend on spine, 15x22cm (5.9"x8.7"). All of Jesse Owen's medal events: gold in 100 Meters, August 3; 200 Meters, August 5; 4x100 Meter Relay, August 7; and Long Jump, August 4. EF. (\$200)
182. **Official Telegram Congratulating Gisela Mauermayer, Gold in Discus on August 4, 1936.** 4 pages, brown color, 20.8x29.7cm (8.2"x11.7"). German eagle over flags, and swastika in sky. Punchholed, EF. (\$100)
183. **Western Union Telegram, July 9, 1936 by Frederick Rubien, USOC, to Confirm Passage of Water Polo Participant Fred Lauer's Wife.** 20.2x16.5cm (8"x6.5"). VF. (\$90)
184. **Pair of Brochures for Fred Lauer, U.S. Water Polo Player in Berlin 1936. Handbook for Officials and Members of the American Olympic Team.** 19 pages, 11.3x17.1cm (4.4"x6.7"). Plus Notice to Bearers of Passports by the Department of State. With envelope. 51pp., 8.9x15.3cm (3.5"x6"). Both EF. (2 pcs.) (\$100)

Please Bid Early!