



196



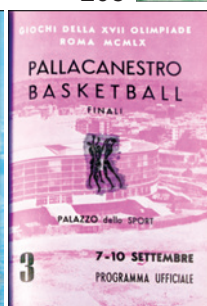
201



203



203



203



196. **Commemorative Logo Serving Tray.** Special black hard plastic inlaid in color and gold, 39.2x27.2cm (15.4"x10.7"). Logo in color surrounded by skier, ice hockey player and skater. Maker's descriptive sticker on back. EF. (\$160)

ROME, 17th OLYMPIC GAMES, 1960

197. **Official Torch.** Bronzed aluminum, 39.5cm (15.5"), designed by Professor Maiure and his team from the National Museum of Archeology in Naples. The design is based on drawings of torches on ancient Etruscan ceramics. Wear of bronze around edges, VF+. (\$5,500)
198. **Chef de Mission Badge.** Bronze, partially goldplated, 38x48mm. Gold laurel wreath, "CAPO MISSIONE" on lavender bar. *One of 66 badges.* Elbel S-6. EF. (\$600)
199. **Canoe/Rowing Participant's Badge.** Bronze, partially goldplated, 38x48mm. With blue bar inscribed "ATLETA". Elbel S-29. EF. (\$180)
200. **Weightlifting Participant's Badge.** Bronze, partially goldplated, 38x48mm. "ATLETA" on purple bar. Elbel S-26. EF. (\$200)
201. **Wilma Rudolph Oil Painting Winning Three Gold Medals in Rome 1960.** Multicolor, 54x69.2cm (21.3"x27.2"), painted by Carol Scott. Wilma running towards victory, her 3 gold medals at lower right, Rome Coliseum Olympic Stadium in background. *Wilma, who had polio as a child and needed to wear leg braces, won gold in 100-Meters, 200-Meters, and in the 4x100 Meter Relay.* Mounted in a red frame. EF. (\$400)



197



198



199



200



204



205



206

202. **Rome 1960 Official Report in English.** Vol. 1 – 893pp., Vol. 2 – 1054pp., both illustrated in b&w and color. Bound in blue leatherette with gilt legend. Ex Duke University Library. VF. (2 vols.) (\$260)
203. **Group of 40 Programs Bound in Blue Linen.** Two volumes, 15x20.8cm (5.9"x8.2"). Included are Opening Ceremonies, Athletics (9 programs), Canoeing, Rowing (3), Football (2), Hockey (3), Cycling (3), Yachting, Swimming (5), Wrestling, Basketball (3), Modern Pentathlon, Boxing (August 25-September 3), Fencing (3), Weightlifting and Equestrian Sports (2), total 40 programs. All EF. (\$500)
204. **Centennial of Pierre de Coubertin's Birth (1963).** Silver, 68mm, 146.5 grams (almost 5 ounces), by M. Quérolle. Bust r. of restorer of modern Olympic Games (1863-1937). Rev. Five sports encircling flaming torch on Olympic rings. EF. (\$180)
205. **Fourth Pan-American Games in Sao Paulo, 1963. Participation Medal.** Bronze, 49mm. Equestrian statue. Rev. Pan American logo with crossed laurel branches. EF. (\$100)

INNSBRUCK, 9th OLYMPIC WINTER GAMES, 1964

206. **Participation Medal.** Bronze, 61mm, by Welz. Innsbruck Olympic emblem within German legend. Rev. Innsbruck city view, Austrian Alps in background. EF. (\$280)



207



208



210



211



212



214



215



213



216



217



207. **Group of Twelve Great Britain Winter Participant Pins from Innsbruck 1964 to Salt Lake City 2002, and Sochi 2014.** All EF. (12 pcs.) (\$700)

208. **Commemorative Lighter.** Silvered, multicolor enamel, 54x42mm. View of Innsbruck between Austrian eagle and Olympic rings in color over 5-line Olympic legend. EF. (\$100)

TOKYO, 18th OLYMPIC GAMES, 1964

209. **Official Torch.** The bowl is made of blackened aluminum alloy, 16.8cm (6.6") wide. The cylinder is clad with stainless steel, length 64.8cm (25.5"). Bowl is inscribed "XVII Olympiad Tokyo 1964" and Olympic rings. The bottom of the cylinder features the Tokyo official logo. Used in the torch relay with the number of the torch runner still affixed. VF-EF. (\$14,000)

210. **Swimming and Diving Participant's Badge.** Goldplated bronze, 37x60mm. "Competitor" on violet bar, with blue ribbon. Elbel S-126. EF. (\$350)

211. **XVIII Olympiad Badge.** Goldplated, 25x38mm. "Tokyo 1964" and rings on green, "XVIII Olympiad" on blue enamel below. Japanese legend on back. EF, in cardboard box with gold Japanese legend. EF. (\$100)

212. **Participation Medal.** Copper, 61mm, by T. Okamoto/K. Tanaka. Stylized figures of three runners and swimmer. Rev. Olympic rings dividing English and Japanese legend in 6 lines. EF. (\$300)

213. **Commemorative Torch Relay Plaque.** Goldplated bronze, 30x50mm. Torchbearer to right holding Tokyo torch. Rev. Logo between Japanese legend. EF. (\$150)

214. **Official Torch Relay Medal.** Bronze, 48mm. Bust of torchbearer with flaming torch. Rev. Olympic rings over legend. Housed in wooden box with torch relay organizing legend, lined in blue velvet. EF. (\$180)

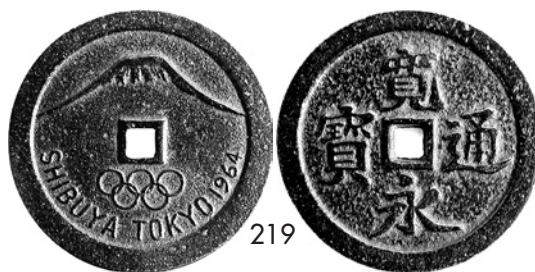
215. **Commemorative Torch Relay Medal, 1964.** Goldplated copper, 60mm, issued by Japan Athletic Promotion Foundation, made by Mitsui Mining & Smelting Co. Two torchbearers, after an illustration on an ancient Greek jar. Rev. The Sendagaya Gate of the Olympic National Stadium. EF. Housed in original case. (\$150)

216. **Commemorative Torchbearer Medal.** Goldplated copper, 50mm, by Hata. Draped female r. in high relief holding torch. Rev. Palm branch enclosing 3-line legend. In plastic case with Tokyo logo. Unc. (\$150)

217. **Official Tokyo Metropolitan Olympic Police Silver Medal,** Silver, 50mm, Cauldron between Olympic events. Rev. Chrysanthemum flower with Olympic rings. EF. With brochure in Japanese, housed in white plastic case with color logo on top. Medal EF. (\$200)



218



219



220



222



223



224



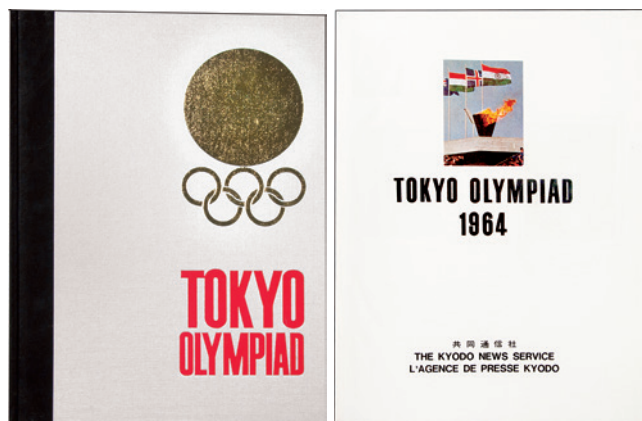
224



226



227



225

218. **Official Kanagawa Police Department Olympic Bronze Medal.** 50mm, Olympic rings with chrysanthemum flower. Rev. Flaming cauldron between soccer player, swimmer, runner and rower. Kanagawa was the water sports (rowing) venue. EF, in white plastic case. Scarce. (\$180)
219. **Commemorative Shibuya Tokyo 1964 Medal.** Cast blackened iron, 62mm. Mount Fuji, rings and legend below. Rev. Legend, center hole, after an ancient Japanese coin. EF. (\$150)
220. **Pair of Tokyo Olympic Stadium Seating Cushions.** Blue, and yellow linen, 24x30.5cm (9.5"x12"), courtesy of the Japanese Gymnastic Association. Advertising of Shin-Etsu (blue cushion) and Mitsui (yellow cushion) on back. Both EF. (2 pcs.) (\$120)
221. **Men's Titled Athletics Black & White Film.** In plastic case, 18.5cm (7.3"). EF. (\$100)

222. **Press Identity Card "E" of the Editor of Athletics Weekly in England.** 6pp., with photo, in red plastic cover with Tokyo 1964 logo, 8x11.3cm (3.1"x4.5"). Abt. EF. (\$120)
223. **Identity Card "F" of an Austrian Canoeing Participant.** 6pp. with photo, in blue plastic cover with Tokyo logo, 8x11.3cm (3.2"x4.5"). Abt. EF. (\$120)
224. **(Book) XVIII Olympiad Tokyo 1964.** 209pp. of black and white photos, 26.2x37.3cm (10.3"x14.7"), in Japanese. All events are profusely illustrated, complete result list from 1896-1964, torch relay photos etc. Bound in white linen with Tokyo logo in red and gold. EF. (\$180)
225. **(Book) The Kyoto News Service. Tokyo Olympiad 1964.** 351pp. illustrated heavily in color and black & white, 26x34.5cm (10.2"x13.6"), captions in Japanese, English and French. Report from the lighting of the flame in Olympia, the torch relay, opening ceremony, the Games to the closing ceremony, and complete results. Bound in silver covers with gold and red, with paper slipcover and mailing carton, EF. (\$200)
226. **63rd IOC Session in Madrid, 1965. Light Blue Enamelled Badge.** Silvered, 31x56mm. With light blue ribbon, VF-EF. Badge EF. (\$400)
227. **66th IOC Session in Tehran, 1967. Press Badge.** Silvered, partially gilt, rings in color, 48x40mm. Red enamelled bar with "PRESS" attached at bottom. EF. Rare. (\$2,400)

Please Bid Early!



228. **Pair of Shuss Mascots.** Red, white and blue plastic, on wheels, 5.4x4.4cm. Both mascots compete in “shussing” downhill, Olympic rings on forehead. In original packaging. EF. (\$120)

229. **MEXICO CITY, 19th OLYMPIC GAMES, 1968**
Official Equestrian Venue Badge. Gilt, partially enamelled, 30x59mm. Horse’s head above “Avandaro 68”, logo and white dove below. Unlisted in Elbel. EF. Rare. (\$600)
230. **Pair of 1968 Mexico Olympic Commemorative Medals.** Silvered bronze and bronze, 63mm. Radiant “Mexico Olympics 1968” and Olympic rings. Rev. Aztec scene encircled by two snakes. Cased. EF. (\$140)
231. **Aeronaves de Mexico, Large Official Bag of Mexican Airline.** White plastic, orange piping, abt. 35x38cm (13.8”x15”). Airline logo and color rings with “1968 Official Carrier”. Rev. Airline logo and “Super Jets DC-8C”. EF. (\$100)
232. **Group of Eight Official Programs.** 18x18cm (7.1”x7.1”), between 48 and 100 pages each, illustrated, in French, English and Spanish. Each includes a historic review of the sports; Basketball, Boxing, Equestrian, Modern Pentathlon, Volleyball, Water Polo, Weightlifting and Yachting. A few with results written in. VF to EF. (8 pcs.) (\$350)

233. **SAPPORO, 11th OLYMPIC WINTER GAMES, 1972**
Participation Medal. Bronze, 60mm, by S. Fukuda. Sapporo Olympic emblem. Rev. Two large arrows attached to stylized athlete. EF, in original clear plastic case. (\$300)



234. **Organizing Committee Badge.** Silvered, 37x59mm. “Committee” on dark blue enamel. With white ribbon, yellow center stripe. Elbel W-25. VF-EF. Rare. (\$1,000)
235. **Radio & TV Badge.** Silvered, 37x59mm. “Radio & TV” on red enamel. With white ribbon, yellow center stripe. Elbel W-60. EF. (\$650)
236. **Official Torchbearer Medal.** Bronze, 32x33mm. Cauldron with Olympic flame. Rev. Logo. *Each torchbearer received one of these medals.* EF. (\$120)
237. **Commemorative Winner’s Medal.** Bronze, 55mm. Nude draped winner in front of olive branch. Rev. Official logo and legend. Housed in lucite case with color Sapporo logo, EF. (\$120)
238. **Complete Set of Mascot Bears: Torchbearer, Slalom Skier, Luger and Ski Jumper.** Multicolor plastic 11.5cm; 7.5x13cm; 9x9.5cm and 16x7.5cm. With Japanese legend, numbered 1 through 4. All EF. Very rare as a complete set. (4 pcs.) (\$600)