



463



464



465



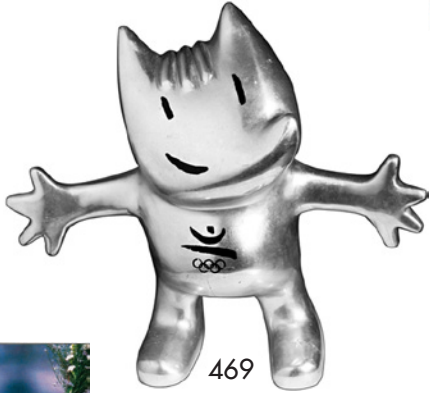
466



467



468



469



470



471



472



473



474



475



476

463. **Official Torch Relay Medal.** Goldplated, 68mm. High relief flaming torch. Rev. Seoul logo. Presented to torch bearers. In case, VF, medal Unc. (\$175)

464. **(Autograph) Jackie Joyner Autograph, Winning the Heptathlon in Barcelona,** on 4-page brochure "The Olympic Spirit". 25.4x30.3cm (10"x11.9"). EF. (\$125)

ALBERTVILLE, 16th OLYMPIC WINTER GAMES, 1992

465. **Swiss Team Pin.** Multicolor enamel, 27x34mm. EF. (\$65)

BARCELONA, 25th OLYMPIC GAMES, 1992

466. **Official Torch.** Chrome-plated aluminum, 65cm (23.6"), designed by André Rich. "XXV Olympiad Barcelona 1992" legend and goldplated Barcelona emblem. Rubbing on leather part as usual, o.w. EF. (\$6,000)

467. **Official Paralympic Torch.** Chrome-plated aluminum, 65cm (23.6"), designed by André Rich. "Paralimpics Barcelona 1992" legend and Paralympic Barcelona logo in gold on side. EF. Rare torch. (\$5,000)

468. **Swiss Team Pin.** Multicolor, 27x34mm. EF. (\$65)

469. **Large Mascot Cobi Figure.** Chrome-plated, 25cm (9.8") wide, 23cm (9.1") tall. Smiling Cobi with outstretched arms welcoming the world to the Barcelona Games. EF. Very scarce. (\$175)

470. **Trio of Cobi Mascots.** Chrome-plated, 18cm (7.1") wide, 14cm (5.5") tall. Plus lt. orange nylon, 24cm (9.5") wide, 22.5cm (8.9") tall and rubber, 6.5cm (2.6") tall. Abt. EF to EF. (3 pcs.) (\$125)

471. **(Autograph) Carl Lewis, Winner in Barcelona 1992, Autograph on "The Olympic Spirit"** 4-page brochure, 25.4x30.3cm (10"x11.9"). EF. (\$125)

472. **Closing Ceremony Program, August 9, 1992.** 38pp., 29x32cm (11.4"x12.6"), illustrated in b&w and color, in 4 languages. EF. (\$150)

473. **IOC Participant's Pin.** Goldplated, 14x19mm. Unc. Numbered, in white plastic wallet. (\$100)

474. **Lot of 49 Lillehammer 1994 Bud Greenspan "The Official Olympic Film" Pins.** Silvered, multicolor enamel, 30x25mm. All Unc. (49 pcs.) (\$100)

475. **Design Handbook. The XVII Olympic Winter Games, Lillehammer 1994.** Binder 28x31.5cm (11"x12.4"). Nine chapters in Norwegian, English and French. Inside cover page tear on lower left from defective binder closure, o.w. EF. (\$150)

ATLANTA, 26th OLYMPIC GAMES, 1996

476. **Official Centennial Torch.** Silvered aluminum and wood, 55cm (21.65"). Names of all 23 Olympic cities from 1896 to 1996 inscribed on torch. *The Hellenic Olympic Committee celebrated the 100th Anniversary of the 1896 Olympic Games in the Panathenean Stadium in Athens on April 6, 1996. Part of this celebration was the re-enactment of the 1896 Games. Olympic medalists and representatives of all cities who had hosted the Olympic Games since 1896 took part in the torch run within the stadium. Afterwards, they took the torches back to their Olympic cities for a ceremony.* EF. (\$4,000)



477. **Official Torch.** Aluminum and Georgia pecan wood, 80cm (31.5”), designed by Peter Mastrogiannis. 22 reeds represent the cities where Olympic Games were held since 1896. Gathered by 2 goldplated brass bands, the top band displays the Atlanta torch logo and the quilt of leaves design, the bottom band lists all Olympic cities since 1896. The wooden pecan handle represents the connection of the flame between heaven and earth. *The flame was lit in Olympia. It reached Los Angeles on April 27 and ended 84 days later in Atlanta, carried by 10,000 relay runners, horses, bicycles, trains, ships, and hydroplanes.* EF. (\$2,750)
478. **Group of 117 Atlanta 1996 Bud Greenspan “Official Olympic Film” Pins.** Gilt, black, gray and white enamel, 27x32mm. All Unc. (117 pcs.) (\$150)
479. **106th IOC Session in Lausanne, 1997. Press Badge.** Goldplated, 30x57mm. With yellow ribbon and cord. EF. (\$200)
480. **IAAF World Championships in Athens, Greece. Participation Medal.** Two ancient Greek runners to left, winner’s olive wreath behind. Rev. Legend and IAAF logo. EF, rubbing on rev., cased. (\$125)

481. **NAGANO, 18th OLYMPIC WINTER GAMES, 1998 Official Torch.** Aluminum, partially gilt, 55cm (21.7”) long. Designed after ancient Japanese torches called Taimatsu. It shows the Nagano emblem and sports pictograms, and a brightly colored orange cord wrapped around the lower part forms the grip. Fueled with clean burning propane, it burnt for about 20 minutes. *The torch relay in Japan took place from January 6 until February 7, when the Olympic fire was lit during the opening ceremony.* Choice EF, in original cardboard box. (\$6,000)
482. **Bud Greenspan’s Own “Air Bud” Nike Shoes.** Head of Bud wearing glasses, “Air” and “Bud” on back of shoes. Mounted on wooden display case with panel “Bud Greenspan / Nike Hall of Fame / October 18, 1999”. Only two pairs were made – one that Bud wore, and this pair. EF. (\$300)

483. **SYDNEY, 27th OLYMPIC GAMES, 2000 Official Torch.** Three layers consisting of polished stainless steel, anodized aluminum and coated aluminum, 77cm (30.5”), designed by Blue Sky Design, Sydney, manufactured by G.A. & L. Harrington. The three layers represent earth, fire and water. Used in the torch relay, lt. discoloration at top, abt. EF. (\$4,000)
484. **Swiss Team Pin.** Multicolor enamel, 27x34mm. EF. (\$65)
485. **Lot of 77 Sydney 2000 Bud Greenspan “Official Film” Pins.** Gilt, multicolor enamel, 32x30mm. All Unc. (77 pcs.) (\$150)

486. **SALT LAKE CITY, 19th OLYMPIC WINTER GAMES, 2002 Official Torch.** Stainless steel, aluminum and sheet molding compound, 94.5cm (37.1”), made by Bombardier. The lines of the torch reflect the lines made by snow and ice winter sports. It shows the engraved motto “With Glowing Hearts / Des plus brilliants exploits” and the logo. *The torch relay ended after its 45000 km journey through Canada with the lighting of the Olympic flame cauldron at the opening ceremony on February 12, 2010.* EF, in its protective bag. (\$2,250)
487. **Paralympic Games Participation Medal.** Steel, 50mm. SLC Paralympic logo. Rev. Paralympic logo, March 7-16, 2002. EF, cased. (\$300)

Please Bid Early!



488



489



490



491



492



493



494



495



496



497



498



499



500



501



502

- 488. **Swiss Team Pin.** Multicolor enamel, 27x34mm. EF. (\$65)
- 489. **Bud Greenspan's Jacket with Patch "The Official Olympic Film – Salt Lake City 2002".** Blue nylon with yellow and gray stripes, extra large size, made by Mizuno. EF. (\$175)
- 490. **Nordic Skiing Competitor's Starting Bib.** Orange and white polyester, black legend. EF. (\$150)
- 491. **Salt Lake 2002 Olympic Torch Relay – Community Planning Guide.** USOC Information, seven chapters housed in binder, 21.5x28cm (8.5"x11"). EF. (\$100)

ATHENS, 28th OLYMPIC GAMES, 2004

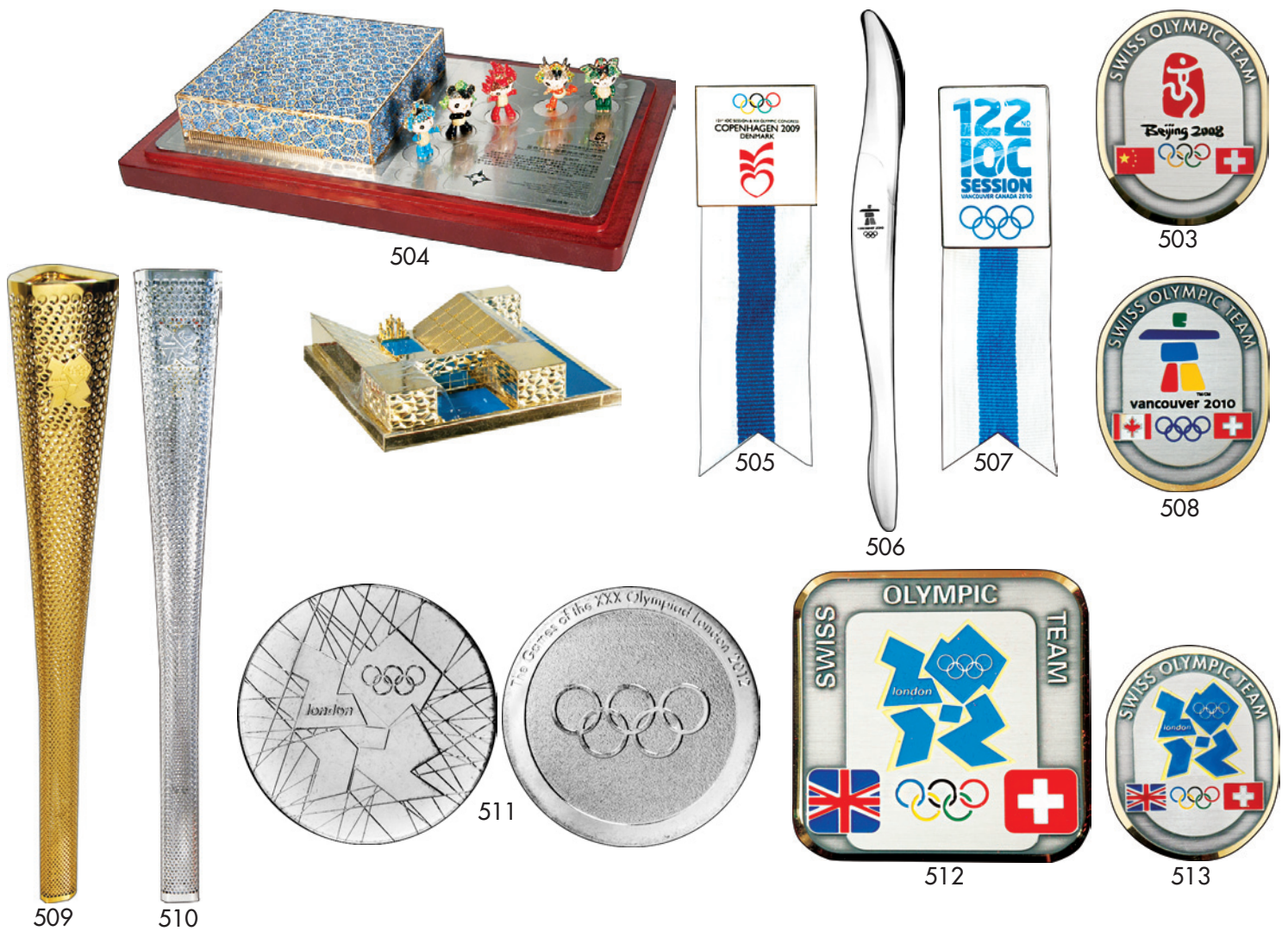
- 492. **Official Torch.** Silver colored metal and olive wood, 68cm (26.8") long. The torch resembles an olive leaf, and the design wants to express "Pan Metron Ariston" (All things in moderation, translated from Greek). A simple and beautiful design. EF. (\$2,750)
- 493. **Swiss Team Pin.** Multicolor enamel, 27x34mm. EF. (\$65)
- 494. **Bud Greenspan's USOC Olympic Hall of Fame Trophy.** Clear Crystal, 30cm (11.8") high, base 9x5cm (3.5"x2"). Golden circle above engraved "Bud Greenspan/Special Contributor". Black base engraved "U.S. Olympic/Hall of Fame". Small chip near top, o.w. EF. (\$950)

TORINO, 20th OLYMPIC WINTER GAMES, 2006

- 495. **Official Torch.** Blue techno-polymer-coated aluminum, 77cm (30.3") long, made by Pininfarina. *The fire was lit in Olympia on November 27, 2005, and arrived in Rome on December 8. Until February 10 the torch traveled over 11,300 km across Italy, also France, Switzerland and Slovenia.* EF. (\$2,000)
- 496. **118th IOC Session in Torino, 2006. IOC Guest Badge.** 32x32mm. With white-blue-white ribbon, and blue cord. EF. (\$175)
- 497. **Swiss Team Pin.** Multicolor enamel, 27x34mm. EF. (\$65)

BEIJING, 29th OLYMPIC GAMES, 2008

- 498. **Official Torch.** Red and anodized aluminum, 72cm (18.4") long. Curved form in the shape of a paper scroll, with lucky clouds graphic expressing harmony. *The torch relay started in Olympia, Greece, on March 24, traveled to over 100 cities on five continents and all of China, a distance of 137,000 km.* EF. (\$5,750)
- 499. **Official Paralympic Torch.** Red and anodized aluminum, 72cm (18.4") long. Curved form in the shape of a paper scroll, with lucky clouds graphic expressing harmony. Beijing Paralympic logo at top. Scarce. EF, with protective sleeve, in original mailing box. (\$4,500)
- 500. **120th IOC Session in Beijing, 2008. International Federation Badge.** Multicolor, 33x33mm, with blue ribbon, and red cord. Original packaging. Unc. (\$175)
- 501. **120th IOC Session in Beijing, 2008. Organizing Committee Badge.** Multicolor, 33x33mm, with red ribbon and red cord. Original packaging. Unc. (\$175)
- 502. **120th IOC Session in Beijing, 2008. Guest of the IOC Badge.** 32x32mm. With blue-white-blue ribbon and uninscribed bar. EF. (\$175)



503. **Swiss Team Pin.** Multicolor enamel, 27x34mm. EF. (\$65)
504. **Blue Symphony – The National Aquatics Center: The Water Cube Art Work, Model of the Swimming Venue Situated in the Olympic Park.** Model on wooden base, 40x28cm (15.8”x11”). The blue roof, made of Austrian imported quasi-crystals, lifts off to reveal the inside of the Swimming Stadium. Five handmade Fuwa mascots, decorated with crystals, are lined up on the right (removable). With brochure and certificate in Chinese and English. Housed in a large leather case lined in ivory velvet, and protective carrying bag. Original price 16,800 Yuan (around \$3,000). A beautiful set. (\$1,250)
505. **121nd IOC Session in Copenhagen, 2009. Guest of the IOC Badge.** 33x33mm. With white-blue-white ribbon, lty. soiled, badge EF. (\$175)

VANCOUVER, 21st OLYMPIC WINTER GAMES, 2010

506. **Official Torch.** Stainless steel, aluminum and sheet molding compound, 94.5cm (37.1”), made by Bombardier. The lines of the torch reflect the lines made by snow and ice winter sports. It shows the engraved motto “With Glowing Hearts / Des plus brilliants exploits” and the logo. *The torch relay ended after its 45000 km journey through Canada with the lighting of the Olympic flame cauldron at the opening ceremony on February 12, 2010.* EF, in its protective bag. (\$2,000)
507. **122nd IOC Session in Vancouver 2010. IOC Guest Badge.** 31x46mm. With white-blue-white ribbon. EF. (\$175)
508. **Swiss Team Pin.** Multicolor enamel, 27x34mm. EF. (\$65)

- LONDON, 30th OLYMPIC GAMES, 2012**
509. **Official Torch.** Gold-colored aluminum alloy, 80cm (31.5”), designed by Edward Barber and Jay Osgerby, made by The Premier Group, Coventry. Triangular form made out of an inner and outer sheet with 8000 holes representing the 8000 torch bearers in Great Britain. EF. (\$6,500)
510. **Official Paralympic Torch.** Silver-colored aluminum alloy, 80cm (31.5”), designed by Edward Barber and Jay Osgerby, made by The Premier Group, Coventry. Triangular form made out of an inner and outer sheet with 8000 holes, Paralympic logo at top. EF. (\$5,000)
511. **Participation Medal.** Cupro-nickel, 39mm. London 2012 logo. Rev. Olympic rings. Housed in black cardboard holder with London 2012 logo. Unc. (\$400)
512. **Swiss Team Medal.** Multicolor enamel, 56x56mm. EF, in presentation case. (\$200)
513. **Swiss Team Pin.** Multicolor enamel, 27x34mm. EF. (\$65)

**Estimates are
Minimum Bid Amounts**

Please Bid Early!