



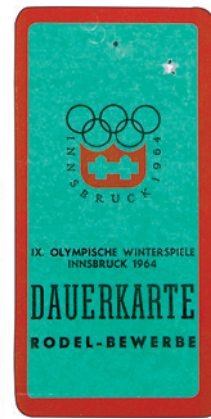
371



372



373



374



375



376



377



378



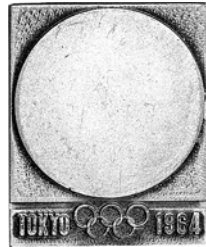
379



380



381



382



383



- 371. **Opening Ceremony Ticket, January 29, 1964, Berg Isel Skip Jump, Price S 60.-.** Yellow with red center stripe, 6x12cm (2.4"x4.7"). EF. (\$75)
- 372. **Opening Ceremony Ticket, January 29, 1964, Berg Isel Skip Jump, Price S 60.-.** Yellow, 6x12cm (2.4"x4.7"). EF. (\$75)
- 373. **Bobsled Season Pass.** Orange stock paper, 6x12cm (2.4"x4.7"). EF. (\$80)
- 374. **Luge Season Pass.** Green stock paper, 6x12cm (2.4"x4.7"). EF. (\$80)
- 375. **Nordic Skiing Season Pass.** Blue stock paper, 6x12cm (2.4"x4.7"). EF. (\$80)
- 376. **Pair of Closing Ceremony Full Tickets, February 9, 1964, Olympia-Eisstadion, 19x9cm (7.5"x3.5").** EF. (2 pcs.) (\$125)
- 377. **Pair of Closing Ceremony Full Tickets, February 9, 1964, 20:00 h, Olympia-Eisstadion.** As preceding pair but with a red stripe in the center. EF. (2 pcs.) (\$125)

TOKYO, 18th OLYMPIC GAMES, 1964

- 378. **Official Torch.** The bowl is made of blackened aluminum alloy. The cylinder is clad with stainless steel, length 64.8cm (25.5"). Bowl is inscribed "XVII Olympiad Tokyo 1964" and Olympic rings. The bottom of the cylinder features the Tokyo official logo. Used in the torch relay. Several small bumps on the cylinder with Tokyo logo, bowl EF. (\$15,000)
- 379. **Cased Team Official's Badge.** Goldplated, 37x60mm. "TEAM OFFICIAL" on lavender enameled bar. With white ribbon, gold stripe in center. Elbel S-48. EF. In presentation case. (\$450)
- 380. **East German Team Pin.** Multicolor enamel, 25x25mm. 2-line Japanese legend on back. EF. Scarce. (\$125)

- 381. **Tokyo Torch Relay Organizing Committee Medal.** 48mm. Torch and Olympic rings encircled by legend. Rev. Olympic rings over legend. EF, uneven toning. (\$200)
- 382. **Official Torch Relay Badge for Torchbearers.** Silvered, 26x32mm. Large logo. Rev. "Olympic Torch Relay XVIII Olympiad" in Japanese and English. EF. (\$200)
- 383. **The Olympic Cup Awarded to the City of Tokyo (1965).** Bronze plaque, 50x72mm, by Huguenin. The Olympic Cup created by Pierre de Coubertin. Rev. Olympic rings above 8-line legend in French "The Olympic Cup Created by Baron/Pierre de Coubertin/ Renovator of the Modern Era Olympic Games, has been Awarded to the City of Tokyo". *The Olympic Cup has been awarded since 1906; it is being kept at the Olympic Museum in Lausanne, and the names of the recipients are engraved on a plaque on the trophy. Tokyo was awarded the Cup for Organizing the 1964 Olympic Games. Lennartz-Borger-Höfer pages 428-430. EF, unevenly toned obv. Rare. (\$2,000)*



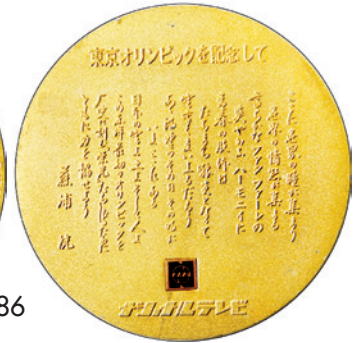
384



385



386



387



388



389



390



391



392



393



394

384. **Gold Presentation Medal of the German Olympic Society in West Berlin, 1964.** Gold, "900" hallmark, 26.79 grams, 55mm with bezel. 40mm medal shows the Berlin city shield. Rev. Berlin Liberty bell in open laurel wreath. Bezel inscribed and dated. EF, cased. **(\$950)**
385. **Commemorative Runner Plaque, 1964.** Goldplated bronze, 15.4cm (6.1"), by Eiji, made for NRR (Japan Radio). Runner l., over Olympic rings and Tokyo 1964 Olympic Games legend. With stand on back. EF, sm. spots. **(\$200)**
386. **Medal Commemorating Olympic Cities from Athens 1896 to Tokyo 1964.** Goldplated aluminum, 9.7cm (3.8"). Discus thrower. Rev. Japanese legend. Abt. EF. **(\$150)**
387. **Presentation Case for the Bronze Winner's Medal.** Lacquered wood with gold on top, 10x20cm (3.9"x7.9"). Case only. EF. **(\$600)**
388. **Torchbearer's T-Shirt.** White textured cotton, medium size, made by Mizuno. Large Tokyo logo patch on front. EF. Rare. **(\$425)**
389. **Large Canadian Team Patch.** Embroidered linen, 15cm (6"). EF. **(\$125)**
390. **Pair of British Commemorative Miniature Boxing Gloves.** Red leather, 90mm (3.5"). One with official Tokyo logo patch, the second with British flag patch. EF. **(\$100)**
391. **Commemorative Olympic Canoeing Event on Lake Sagami Silk Scarf.** Blue and gray with maroon border, 80x81cm (31.5"x31.9"). Canoe race on lake, city and mountain landscape in background. EF. **(\$150)**
392. **Commemorative Runners Lighter.** Multicolor, nickel plated, 36x58mm (1.4"x2.3"), made by Prince. Runners r., official poster design. EF. **(\$100)**
393. **(Bid Book) Answers to the Questionnaire Relating to the Olympic Games of 1964.** Tokyo 1958. 39pp. of answers in French, and 36pp. in English. Seven large fold-out maps of venues etc. housed in back cover. Linen and Japan paper. EF. **(\$100)**
394. **(Bid Book) Brussels Bidding for the 1964 Olympic Games.** 27pp., illustrated, 22.6x29.7cm (8.9"x11.7"), in French and English. Letter of the Brussels Mayor laid in. Marginal browning on cover, contents EF. **(\$100)**

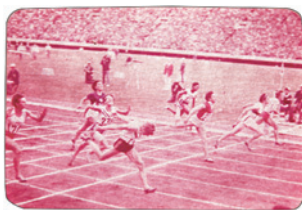
Please Bid Early!



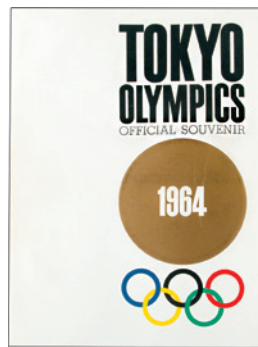
395



396



396



397



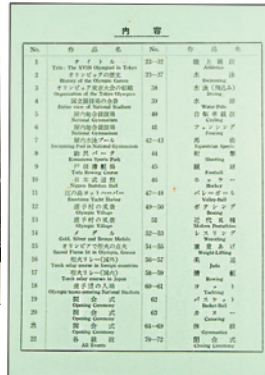
398



399



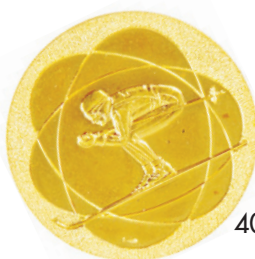
396



399a



400



401



402



403



404



405

- 395. **Programme All Events, Tokyo 1964.** 25pp., illustrated in color, 21.7x29.2cm (8.5"x11.5"), in English and French. Some results penciled in. VF-EF. (\$125)
- 396. **Color Slide Album of the Tokyo Olympics 1964. Published by the Mainichi Newspapers.** 22.5x30cm (8.9"x11.8"). The album contains 72 numbered slides from the Organization, Opening Ceremony, the events and the Closing Ceremony. All identified in Japanese and English. With index, plus an explanation booklet for all slides, 27pp. in Japanese, 25pp in English. Bound in blue leatherette and slipcover. VF-EF, all slides EF. (\$200)
- 397. **(Book) Tokyo Olympics Official Souvenir Book.** Published by Dentsu. 294pp. illus., in b&w and color, 21.2x28.4cm (8.3"x11.2"). Includes history, Tokyo venues, large fold-out program, medals, badges, stamps, posters, tickets, explanation of all 28 sports of Tokyo Games, etc. 2pp. loose, o.w. EF. (\$175)

- GRENoble, 10th OLYMPIC WINTER GAMES, 1968**
- 398. **Cased Guest Badge.** Silver chrome, 37x52mm. Multicolor logo and "INVITE" in black. Elbel W-10. EF, in original case. (\$800)
- 399. **Public Service Badge.** Goldplated, multicolor logo on green enamel, 41mm. Elbel W-17. EF. (\$250)
- 399a. **Press Badge.** Gilt, yellow enamel, 35x45mm. Elbel W-16. EF. (\$175)
- 400. **Austrian Team Pin.** Silvered, 22x22mm, partially enameled. Legend over rings and Austrian colors. Three Austrian athletes won gold: Olga Pall, Alpine skiing; Wolfgang Schwartz, Men's single figure skating; Manfred Schmidt, Men's individual luge. EF. (\$75)
- 401. **Official Commemorative Gold Medal.** Gold, 33mm, 17.2 grams, hallmarked. Slalom skier. Rev. Large logo. EF. (\$700)
- 402. **Colorful Commemorative Skier's Cloth.** Multicolor linen, 74.5x49.8cm (29.3"x19.6"), by Créations Sonacott, France. Olympic flag over Grenoble, slalom skier in foreground. EF. (\$75)

- MEXICO CITY, 19th OLYMPIC GAMES, 1968**
- 403. **Participation Medal.** Copper, 50x50mm, by L. Wyman. Olympic sports pictograms divided by Mexico Olympic emblem. Rev. Spanish legend between two parallel lines. EF. (\$300)
- 404. **Press Badge.** Goldplated, 37x63mm. "PRENSA" on red enamel. With plastic "P" ribbon (pinhole). Elbel S-5. EF. (\$225)
- 405. **Large Free Pistol Mexican Team Shooting Badge.** Chrome-plated brass, 70x70mm, partially enameled in color. Rings above legend and bar with Mexican colors, target at r., pistol below. EF. (\$150)

**Estimates are
Minimum Bid Amounts**



406. **Group of 14 Mexico City and One Grenoble 1968 Commemorative Silver Medals.** Ranging in size from 30mm to 50mm, total weight 402 grams (about 13 ½ ounces). Ten are from Mexico, four from Germany, and one from France. Average EF. (15 pcs.) (\$350)
407. **Ancient Greek Style Amphora Featuring Olympic Athletes. 1968 Allstate Life Olympics Award.** Black and orange ceramic, 18.5cm (7.3”) high. Eight ancient Greek Olympic sports, legend at top. EF. (\$200)
408. **Commemorative XIXth Olympiad 1968 Armband.** Silvered copper, 55mm (2.2”) wide. Discus thrower within color enameled Olympic rings dividing “XIX OLYMPIAD-MEXICO CITY 1968” EF. (\$100)
409. **68th IOC Session in Warsaw, 1969. Official Medal.** Bronze, 60mm. Mermaid with shield and sword behind legend. Rev. Olympic rings over legend and Olympic motto. Toned EF. (\$150)

SAPPORO, 11th OLYMPIC WINTER GAMES, 1972

410. **Official Commemorative Silver Medal.** Silver, 50 grams, “1000”. View of Sapporo surrounded by snowflakes. Rev. Logo over Japanese and English legend. EF. (\$100)
411. **Black Leatherette Portfolio With Gold Logo.** 34x26cm (13.4”x10.2”), by Mizuno. EF. (\$125)

412. **Heavy Bronze Ashtray with Sapporo Olympic Logo.** Cast bronze, 11x11cm (4.3”x4.3”), 2.6cm (1”) high. Logo in center. EF. (\$150)
413. **Official Sapporo ’72 Pennant.** Silk, 12x31cm (4.7”x12.2”), by the Organizing Committee. In protective plastic bag. EF. (\$125)

MUNICH, 20th OLYMPIC GAMES, 1972

414. **Official Torch.** Steel, 73cm (28.8”), made by Krupp. *The fire was lit in Olympia, Greece on July 28 and carried 5539 km in 29 days to Munich by 5976 runners.* EF. (\$2,500)
415. **Participant’s Badge.** Silvered, 25x35mm. Spiral over lavender legend on light blue enamel. Elbel S-15. EF. (\$150)
416. **Press Badge.** Silvered, 25x35mm. Lavender “Presse” on green bar. Elbel S-18. EF. (\$150)
417. **Team Official’s Badge.** Silvered, 25x35mm. Lavender legend on lt. blue. Elbel S-16. Abt. EF. (\$150)
418. **Trial Strike(?) Winner’s Medal.** Silvered bronze, 60mm, by G. Marks. Victory seated above stadium. Rev. Roman twins Castor and Pollux. Proof-like fields, uneven toning. EF. (\$500)