



487



488



489



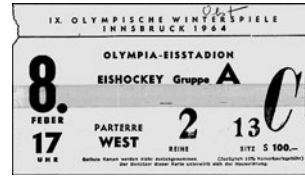
490



492



494



495



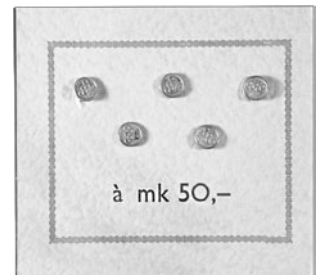
501



499



500



à mk 50,-



496



503



487. **Ticket. Opening Ceremony, August 25, 1960.** Stadio Olimpico, Class IV, Price L. 1.000. Orange and black, 18.4x9.6cm (7.2"x3.8"). EF. (\$100)
488. **Ticket. Boxing, "196", August 27, 1960,** Palazzo Dello Sport. Orange, 18.5x9.5cm (7.3"x3.7"). Small tape on back at r ., o.w. EF. (\$125)
489. **(Full Ticket) Closing Ceremony, September 11, 1960,** Olympic Stadium. Violet, 27.7x9.5cm (10.9"x3.7"). Lt. crease, o.w . EF. (\$100)
490. **(Sheet Music) Olympic Hymn/"Inno Olimpico" 1896.** CONI Edition Roma 1960. 7pp., text to music in Italian, 24x33cm (9.4"x13"), printed by Arti Graf, Mignani Bandellini, Florence. Music by Spiro Samara, te xt by K. P alama. Reduced for song and piano. VF, browning, chip on back cover. (\$100)
- c491. **60th IOC Session in Mosco w, 1962. International Federation Badge.** Bronze, multicolor enamel, 38x42mm. With blue ribbon. Only 44 IOC members attended the session. EF. (\$375)

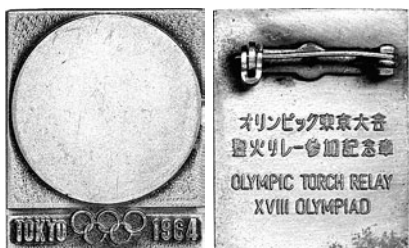
INNSBRUCK, 9th OLYMPIC WINTER GAMES, 1964

492. **Austrian Olympic Committee Presentation Medal.** Silver, 40mm, struck by Austrian State Mint. Austrian NOC logo. Re v. Logo on snowflake surrounded by 9 dif ferent winter sports. Ltly . toned EF. (\$100)
- c493. **Commemorative Landmarks of Innsbruck Olympic Scarf.** Brown and purple/blue silk, 62x63cm (24.8"x24.8"), by Garo, original Maho scarf. Six Innsbruck landmarks, Olympic logo in corners. EF. (\$125)
494. **Ticket. Women's Figure Skating Finals, F ebruary 2, 1964,** Olympia Eisstadion, 16.30, Price S. 250. -. Green, 14.2x8cm (5.6"x3.1"). *Sjoukje Dijkstra, Holland, won gold.* Crease, abt. EF. (\$75)

495. **Ticket. Ice Hockey Finals, February 8, 1964,** Olympia Eisstadion, 17:00, Price S. 100. -. Pink and red, 14x8cm (5.5"x3.1"). *The Soviet Union won gold.* Crease, VF-EF. (\$60)

TOKYO, 18th OLYMPIC GAMES, 1964

496. **Silver Second Place Winner's Medal Awarded for Modern Pentathlon.** Silver, 58mm, by Cassioli. Victory seated above stadium. Rev. Victorious athlete being carried by jubilant teammates. No bezel and ribbon. EF. (\$7,500)
- c497. **National Olympic Committee Pr esident's Badge.** Goldplated, surrounded by stripes in Olympic colors, 67x50mm. "N.O.C." on orange bar. With white ribbon, 2 yello w stripes. Elbel S -012. Lt. wear in center, o.w. EF. Rare. (\$3,500)
- c498. **Weightlifting Team Official's Badge.** Goldplated, 37x60mm. "TEAM OFFICIAL" on lt. blue bar . With lt. brown ribbon. Elbel S-044. EF, in presentation case. (\$500)
499. **Yachting Team Official's Badge.** Goldplated, 37x60mm. "TEAM OFFICIAL" on blue bar. Abt. EF. With lt. blue ribbon, faded. (\$250)
500. **British Team Badge.** Goldplated, multicolor enamel, 27x32mm. EF. (\$100)
501. **Group of Five Finnish 14 Karat Gold Pins in Original Holder .** Each pin 7mm, hallmark ed "585" (14 Karat). Issued to raise funds for the 1964 Finnish team. With original lt. green stiff paper, 3pp., as issued. EF. Rare. (\$250)
- c502. **Silver Small-Size Participation Medal Presented to Tokyo Olympic Flag Raisers.** Silvered copper, 40mm, by Taro Okamoto and Kazumitsu Tanaka; "NAIGA" and hallmarks on edge. Three runners. Rev. Olympic rings dividing legend. EF, in balsa wood box. (\$800)
503. **Commemorative Olympia to Tokyo Torch Relay Medal – Daihatsu Olympic Torch Caravan "Berlina", June to September 1964.** Bronzed white metal, 7.7x5cm (3"x2"). Car of the torch caravan. Rev. Olympic rings and le gend in English and Japanese. EF. (\$250)



504



505



507



508



510



511



509



513



504. **Official Torch Relay Badge for Torchbearers.** Silvered, 26x32mm. Large logo. Rev. "Olympic Torch Relay XVIII Olympiad" in Japanese and English. EF, in original box. **(\$200)**

505. **XVIII Olympiad Badge.** Goldplated, 25x38mm (1"x1.5"). "Tokyo 1964" and rings on green, "XVIII Olympiad" on blue enamel below. Japanese legend on back. EF, in cardboard box with gold Japanese legend. EF. **(\$150)**

c506. **Olympic Sailing Venue Yokohama Plaque, 1964.** Goldplated bronze, 6.4x9cm (2.5"x3.5"), by Yoshio. Two athlete's busts in high relief over Olympic rings and "1964 Yokohama" on panel below. Unc., in velvet and silk-lined case. Rare. **(\$375)**

507. **Trinidad and Tobago NOC Athletic Recognition Medal.** Goldplated, 45mm. Kneeling athlete holding medal with 3 athletes flanked by laurel branches. Rev. Affixed color flag over 5-line legend. *Three athletes from Trinidad and Tobago won track and field silver and 2 bronze medals.* EF. **(\$175)**

508. **Commemorative Large Silver Medal.** Silver, "1000", 70 grams, 60mm. Five runners to the right. Rev. Flaming torch over Olympic rings and "Olympia 1964". EF. **(\$150)**

509. **Commemorative Crown Prince and Crown Princess Olympic Medal.** Silver, 40mm. Facing busts. Rev. Logo. Proof, EF. **(\$100)**

510. **50th Anniversary Medal of the Raising of the First Olympic Flag in Alexandria, Egypt, 1964.** Silvered bronze, 60mm. Olympic rings over French legend. Rev. Olympic rings over Arabic legend. *The Olympic rings and flag were introduced in Alexandria in 1914.* EF. **(\$300)**

511. **Porcelain Trials Trophy Won by a Bronze Boxing Medal Winner.** Cobalt blue Ilmenau porcelain, 34cm (13.4"). Gold legend, Olympic rings and gold laurel leaf. *The Tokyo bronze medal winner won this trophy for his first place in East German trials.* EF. **(\$400)**

c512. **Bermuda Team Patch.** Multicolor, 8.3x11.6cm (3.3"x4.6"). Bermuda seal with Olympic rings between "Bermuda" and "Tokyo 1964". Abt. EF. **(\$125)**

513. **U.S. Olympic Team Bag with PanAm Logo.** Blue plastic, 30.3x29cm (11.9"x11.4"). U.S. shield in color within open wreath. Rev. Logo of PanAm, official airline of the 1964 U.S. team. EF. **(\$150)**



515



516



516

516

c514. **Large Olympic Stadium Scarf.** Blue and black, 78x78cm (30.7"x30.7"). View of stadium, "Tokyo 1964" over Olympic rings at left top. EF. **(\$200)**

515. **Commemorative Tokyo 1964 Stadium.** Coppered white metal, 15.8x12.4cm (6.2"x4.9"). Stadium with white and red Japanese flag and "Tokyo 1964" in center. "1964" and Japanese legend on back. EF. **(\$150)**

516. **1964 Tokyo Olympic Opening Ceremony Film.** 8mm reel, by Lilli Graph, housed in balsa wood box with cardboard sleeve, 11.5x11.5cm (4.5"x4.5"). Plus three b&w photos of the opening ceremony. EF. **(\$150)**



517



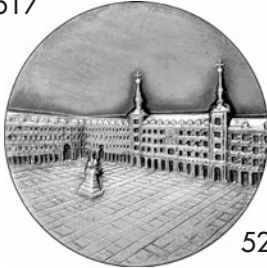
518



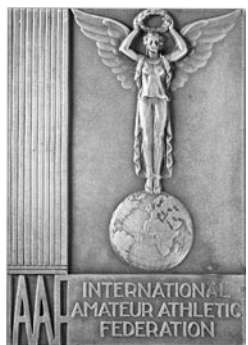
519



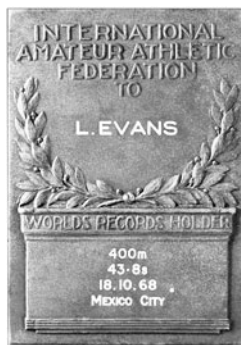
520



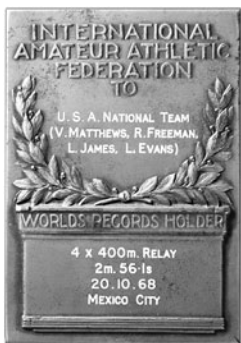
521



524



525



517. **Closing Ceremony and Grand Prix Jumping Program, October 24, 1964.** 64pp., illustrated, 14.6x21 cm (5.8"x8.3"), in Japanese, French and English. Purple covers VF, contents EF. (\$125)
518. **Radio TV Press Pass for the Opening Ceremony, October 10, 1964,** National Stadium. 9.3x6.5cm (3.7"x2.6"). Numbered. EF. (\$100)
519. **(Sheet Music) Hymn to Sport. XVIII Olympic Games 1964 Tokyo-Japan.** Multicolor covers, 12pp., text in German, French and English. Music for Choir by Nic Niobe, text after Pindar, including two pages of photos and "70 Years Olympic Games" article. EF. (\$125)
520. **(Bid Book) Vienna-a Candidate for the 1964 Olympic Games (1958).** 120pp., photos in b&w and color, 30x30cm (11.8"x11.8"), in French, English, Italian and German. Bound in linen. Tape stains on end pages, o.w. EF. (\$250)
521. **63rd IOC Session in Madrid Official Medal, 1965.** Silver, 60mm. View of Madrid Plaza. Rev. Spanish NOC logo encircled by legend. Toned EF. (\$275)
522. **Pan American Games in Winnipeg, Manitoba, Canada, 1967. Silver Winner's Medal.** Silvered bronze, 52mm. Winnipeg and Pan American Games logo between olive and laurel branches. Rev. Large buffalo over legend. With red ribbon, EF. (\$275)



522



526



- GRENOBLE, 10th OLYMPIC WINTER GAMES, 1968**
- c523. **Cased Ice Hockey Silver Second Place Winner's Medal.** Silver, 60mm, by Roger Excoffon. Logo within French legend. Rev. Depiction of an ice hockey player, "Hockey sur Glace" below. *Winners medals show, for the first time, the sport on the reverse.* With ribbon, in black leather presentation case lined in blue velvet and silk. Several hairlines on obverse of medal, toned VF-EF/EF. (\$11,000)
- MEXICO CITY, 19th OLYMPIC GAMES, 1968**
524. **Lee Evans 400 Meters Gold Medal Winner and World Record Holder. International Amateur Athletics Federation World Record Holder's Award Plaque.** Bronze, 6.9x9.9cm (2.7"x3.9"). Winged Nike on globe, IAAF emblem. Rev. "L. Evans" within laurel branches, below on plaque in white: "400m/43.8s/18.10.68/Mexico City". *Evans wanted to withdraw after T. Smith and J. Carlos were expelled from the Olympic village after their Black Power protest, but they convinced him to compete and win, which he did.* EF. (\$1,250)
525. **Lee Evans 4X400-Meter Relay Gold Medal Winner and World Record Holder. World Record Holder's Award Plaque Presented by IAAF.** Winged Nike on globe, IAAF emblem. Rev. Engraved in white "U.S.A. National Team (V. Mathews, R. Freeman L. James, L. Evans)" between crossed laurel branches, on plaque below "4x400 Relay/2m.56.1s/20.10.68/Mexico City". *According to D. Wallechinsky, Ron Freeman's second leg is the fastest time ever recorded, and Lee Evans crossed the finish line 30 yards ahead of the second finishers.* EF. (\$1,250)
526. **(Tommie Smith Autograph) Black Power Button.** Black and green on white celluloid, 65mm (2.6"). 5-line black legend between green branches. Signed on the back "Tommie Smith 10-16-68". *At the 200-Meter Medal Ceremony on October 16, gold and bronze medal winners Tommie Smith and John Carlos, USA, wearing black socks without shoes and an "Olympic Project for Human Rights" button, raised their gloved fists in the black power salute when the American flag was raised and the National Anthem was played. They were subsequently expelled from the Olympic Village.* EF. (\$750)



527



529



530



532



532



533



534



535



537



539



527. **Commemorative Mexico 1968 Olympic Games Medal.** Silver, "1000", 50mm. Facing head in circle of rays, Olympic rings at l. Rev. Flower design. Unc. (\$100)
- c528. **Great Britain, Shooting Team Patch.** White wool, 73x72mm. British flag under Olympic rings and "Great Britain" – "1968 Shooting". EF. (\$100)
529. **British Swimming Team Patch.** Blue linen and color embroidery, 20.7x22.8cm (8.1"x9"). Color rings over flag, within legend "Great Britain/1968 Swimming". EF. (\$125)
530. **British White Team Vest Patch.** Red, white and blue embroidery, 13.7x10.5cm (5.4"x4.1"). Flag between "Olympic Games 1968 – Great Britain". EF. (\$100)
- c531. **Colorful Commemorative "Mexico 68" Scarf.** Silk, 68x65cm (26.8"x25.6"). Five flowers in different colors surrounded by "Mexico 68" logo. EF. (\$125)
532. **Closing Ceremony Program, October 27, 1968.** 4pp., 22.5x22.5cm (8.9"x8.9"), in French, English and Spanish. Double logo (1968) and spiral logo (1972) on blue covers. With additional closing ceremony napkin. EF. (2 pcs.) (\$200)
533. **Ticket. Closing Ceremony and Equestrian, October 27, 1968, Estadio, 8 a.m. and 3 p.m.** Dark and lt. purple, 11.8x11.6cm (4.6"x4.6"). Crease, VF+. (\$75)
534. **(Autograph) Bob Beamon and His World Record Setting Long Jump Photo.** B&W, 20.3x25.2cm (8"x9.9"). Beamon in mid-air during his 8.9m (29' 2.5") long jump. Signed in blue marker "Bob Beamon 29 2/5 / 1968". EF. (\$100)
535. **27th Balkan Athletic Games in Athens, 1968.** Bronze, original green patina, 50mm. Nike, goddess of Victory, holding wreath over (Olympic) stadium. Rev. 6-line Greek legend, laurel branch at r. EF. (\$125)
- c536. **70th IOC Session in Amsterdam Badge, 1970.** Goldplated, 28x53mm. City arms enameled in red and black, blue border. *Sixty-two members were present.* EF. (\$300)
537. **National Olympic Committees Meeting in Munich 1971. Austrian NOC Badge.** Silvered, green and blue enamel, 59x24mm. Abt. EF. (\$125)



540



544

538. **National Olympic Committees Meeting in Munich, 1971. Guest Badge.** Silvered, green and blue enamel, 59x24mm. EF, lt. toning. (\$125)
- SAPPORO, 11th OLYMPIC WINTER GAMES, 1972**
539. **Cauldron Lighting at the Opening Ceremony Medal, 1972.** Silverplated bronze, 40mm. Cauldron with Olympic flame. Rev. Olympic rings between first winter Olympic Games in Sapporo legend. EF, in clear plastic case with gold legend. Rare. (\$275)
540. **Torchbearer's Badge.** Silvered, 27x34mm. Logo. Rev. Japanese legend. EF. (\$150)
- c541. **Commemorative Sapporo 1972 Olympic Games Ashtray.** White porcelain in shape of Hokkaido, 14x16.5cm (5.5"x6.5"). Indented round center light blue with color logo. EF. (\$100)
542. **Official Report in English and French Languages.** 495pp., illustrated in b&w and color, many photographic plates, 21.5x30.4cm (8.5"x12"). Bound in dark blue linen, silver design on cover and spine. EF. Very scarce. (\$2,000)
- MUNICH, 20th OLYMPIC GAMES, 1972**
- c543. **Bronze Winner's Medal Lapel Pin.** Bronze, 12x12mm. Spiral logo. Presented to bronze medal winners. EF. (\$250)
544. **Participant's Pin Presented by the IOC.** Goldplated, 14x19mm. Unc. Numbered, in white plastic wallet. (\$125)

Please Bid Early!