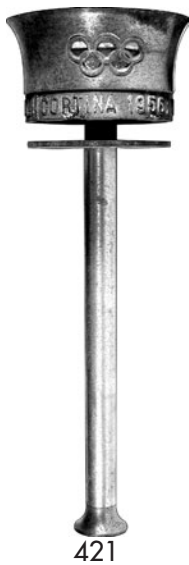




420



421



425



428



429

420. **Second Mediterranean Games in Barcelona, 1955. Organizing Committee Badge.** Bronze, 30x48mm. With black ribbon and attached Spanish NOC pin, suspended from "ORGANIZACION" bar. Toned EF. (\$125)

CORTINA d'AMPEZZO, 7th OLYMPIC WINTER GAMES, 1956

421. **Official Torch.** Aluminum, 47cm (18.5") long. "VII° GIOCHI OLIMPICI INVERNALI CORTINA 1956", legend, cut-out Olympic rings at top. The flame was lit at the Temple of Jupiter in Rome on January 22, 1956, and flown to Venice. The torch relay from there went to Cortina, where the fire was lit in the stadium at the opening ceremony on January 26 by Guido Caroli. Abt. EF. Very rare. (\$29,500)

- c422. **Gold CONI Presentation Medal for Bruno Bonfiglio, President of the Technical Figure Skating Commission.** Gold, 30mm, 18.2 grams, by C. Affer. Female head facing, crowned by Olympic rings, flame in lower r. Same design as the participation medal. Rev. Engraved name surrounded by National Olympic Committee of Italy legend. Unc. Rare. (\$4,000)

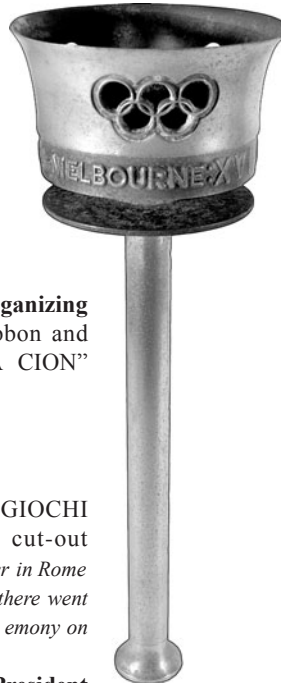
- c423. **Cased Silver Participation Medal.** Hallmarked silver, 45mm, by C. Affer. Female head facing, crowned by Olympic rings, flame in lower r. Rev. Snowflake over Mount Pomagagnon. Presented to IOC Members (number is known), FIS and Italian NOC. Housed in original blue leather presentation case, enameled rings on top. EF. Rare. (\$3,000)

- c424. **Small Size Silver Participation Medal.** Silver, 40mm, by C. Affer. Female head facing, crowned by Olympic rings, flame in lower r. Rev. Snowflake superimposed on Mount Pomagagnon. EF. Very rare. (\$1,750)

425. **Italian Olympic Committee Silver Award Medal for Mozellini, Second Place Winner in Four-Man Bob, 1956.** Silver, 50mm. Helmeted head r. of Roma. Rev. 4-line engraved legend under CONI logo. EF, in blue leather case (trace of removed tape), lined in velvet and silk. (\$1,000)

- c426. **Official Award Vase for Gold Medal Winners in Cortina 1956.** Cast bronze, 14.5cm (5.7") tall, 14cm (5.5") wide. Vase standing on 3 legs in ancient Greek tripod form, "CORTINA 1956" legend with Olympic rings on side. Official report p. 266. EF, as made. Very scarce. (\$1,750)

- c427. **Official Diploma for the President of the Technical Artistic Ice Skating Commission.** Multicolor, 35x52cm (13.8"x20.5"). Rings over cauldron with flame, view of stadium below. Creased, some paper loss, VF+. (\$200)



430



431



432



433



428. **STOCKHOLM, 16th EQUESTRIAN OLYMPIC GAMES, 1956. Ticket. Three-Day Equestrian Event: Jumping, June 14, 1956, 3pm, Olympic Stadium, Price SEK 15.** Blue, 12x7.8cm (4.7"x3.1"). EF. (\$200)

429. **(Brochure) Course of the Jumping Event of the Three-Day Equestrian Event Built by Greger Lewenhaupt.** Stiff paper, 3pp., 14.3x21cm (5.6"x8.3"). With pencil notes, punchhole at top. Lt. crease, VF-EF. (\$75)

430. **MELBOURNE, 16th OLYMPIC GAMES, 1956. Official Torch.** Aluminum alloy, 47cm (18.5") tall. Cut-out Olympic rings dividing legend "Melbourne XVI OLYMPIAD 1956". 110 torch runners carried the flame from Darwin to Melbourne after Qantas Airline brought the flame from Athens. EF. (\$19,000)

431. **Cased Participation Medal.** Bronze, 63mm, by A. Meszaros. Olympic rings over Melbourne coat of arms within legend. Rev. Olympic motto within circle of athletes marching in pairs, in round clear plastic case. EF. (\$375)

432. **East German Team Medal.** White Meissen porcelain, partially colored, 53mm. Color rings within Olympic motto. Rev. 6-line legend of the East German NOC. The German team included athletes from East and West Germany. EF. Scarce. (\$200)

- 432A. **Official Broadcasting Pin.** Multicolor enamel, 28x35mm. Flaming torch on green continent, number "810" below within dark blue border with legend. EF. Rare. (\$125)

433. **Pair of Commemorative Logo Buttons.** Multicolor, 32mm. Both EF. (2 pcs.) (\$100)

Please Bid Early!



434

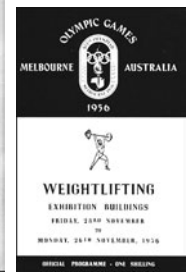
434



435



436



437



438



439



440



442



443



444



434. **Group of Twenty Different Australian Medal Winners Buttons.** White celluloid, yellow and green, 32mm. Photograph of winner under laurels, name and sport below. Included are Shirley Strickland, Dawn Fraser, Kevin Gosper: sports are athletics (8), swimming (9), cycling (1), boxing (1), and sculling (1). VF-EF to EF, average EF. (20 pcs.) (\$225)
435. **Official Program. Field Hockey Finals, December 6, 1956. Main Stadium.** 16pp., 13.3x20.8cm (5.2"x8.2"). Browning, VF+. (\$60)
436. **(Program) Football Final and Closing Ceremony, December 8, 1956.** 17pp., 13.9x19cm (5.5"x7.5"). Crease, VF-EF. (\$100)
437. **Official Program. Weightlifting, November 23-26, 1956.** 20pp., 13.9x19.1cm (5.5"x7.5"), orange covers. EF. (\$75)
438. **Official Program. Yachting, Port Phillip Bay, November 26 to 29, and December 3 to 5, 1956.** 24pp., 13.9x19.1cm (5.5"x7.5"). EF. (\$75)
439. **(Brochure) Official Bulletin of their Secretary General of the Iranian National Olympic Committee on the Occasion of the 10th Anniversary, Teheran, May 1956.** 23pp. in French plus 80pp. in Arabic, all illustrated, many plates, some in color. Iran and sport in ancient and modern times, participation in Cortina and Melbourne, photos of the Shah, his IOC member document, etc. Color covers. Abt. EF. (\$150)
440. **(Card Album) Peereboom, Klaas. The Dutch Olympic Team 1956.** 28pp., 71 photographic cards of Dutch team members in Water Polo, Swimming, Yachting, Hockey, Athletics, Cycling and Shooting pasted in, 17x24.2cm (6.7"x9.5"), text in Dutch. Stiff color covers, VF-EF, contents EF. (\$100)
- c441. **International Fencing Championship in Vienna, 1958. Honorary Prize Plaque Awarded by the Austrian Olympic Committee.** Green onyx, 16.2x23.4cm (6.4"x9.2"). Austrian NOC bronze medal over laurel branch and silvered plaque with 5-line award legend. Housed in presentation case lined in red velvet. EF. (\$450)
442. **Soccer World Cup in Stockholm 1958. Press Badge.** Bronze, 30x40mm. With yellow ribbon inscribed "PRESS". EF. (\$425)
443. **Third Asian Games in Tokyo, 1958. Press Badge.** Bronze, 36x53mm, enameled in white, pink and green. EF. (\$175)
- SQUAW VALLEY, 8th OLYMPIC WINTER GAMES, 1960**
444. **Participation Medal.** Bronze, 50mm. Hand holding torch. Rev. Logo. EF. (\$1,100)



446



447



450

- c445. **Gold Medal Winner's Badge of the FIS World Ski Championships in Squaw Valley, 1960.** Goldplated sterling silver, 32x36mm, made by Huguenin. Snowflake, "FIS" in center. Rev. "World Ski Championships 1960 Squaw Valley USA". *The Olympic winners were also declared FIS winners.* Unc., cased. (\$400)
446. **Patron of Skiers Medal.** Silvered, 30mm. St. Ulrich, patron of skiers, on skis holding bow. Rev. Squaw Valley Olympic Games legend with rings. Looped, toned abt. EF. (\$75)
447. **Japanese Skiing Team Tie Tack.** Goldplated, 70x16mm. With Japanese Squaw Valley 1960 ski team pin. EF. (\$125)
- c448. **Commemorative Logo Serving Tray.** Special black hard plastic inlaid in color and gold, 39.2x27.2cm (15.4"x10.7"). Logo in color surrounded by skier, ice hockey player and skater. EF. (\$200)
- c449. **Commemorative Venue and Events Silk Scarf.** Multicolor, 76x75cm (30"x29.5"). Logo surrounded by ice hockey and skiing events, and Olympic ice arena. Colorful scarf. EF. (\$150)
450. **Trio of Tickets. Arena Daily Ticket #8, February 25, 1960, creased, VF. Valley Daily Tickets, #3, February 20, and #10, February 27, 1960.** Red, blue and white, 5x8.9cm (2"x3.5"), VF-EF and abt. EF. (3 pcs.) (\$175)



ROME, 17th OLYMPIC GAMES, 1960

- 451. **Official Torch.** Bronzed aluminum. 39.5cm (15.5"). Designed by Professor Maiure and his team from the National Museum of Archeology in Naples. The design is based on drawings of torches on ancient Etruscan ceramics. EF, small bump at top. **(\$9,000)**
- c452. **Bronze Third Place Winner's Medal Awarded for Team Gymnastics.** Bronze, 68mm, by G. Cassioli. Victory seated above Colosseum stadium. Rev. Winner carried by jubilant athletes. *No chain was included with gymnastics team winners medals.* EF. **(\$7,500)**
- 453. **Pope John XXIII Rome 1960 Olympic Games Presentation Medal for Athletes.** Bronze, 33mm, by G. Manzu. Bust of Pope John XXIII with mozzetta and camauro. Rev. "Oboedientia et Pax" (Obedience and Peace) under olive plant. *Presented to athletes of the Rome Olympic Games.* Official report pages 464-472. Toned EF. **(\$175)**
- 454. **Official Venue Medal Palazzetto Dello Sport, 1960.** Silvered bronze, 54mm, by Manetti. View of Sports Palace. Rev. Large logo of She-Wolf. EF. **(\$175)**
- 455. **Official State of Luxembourg Presentation Medal.** Bronze, 50mm. Six runners behind Olympic rings. Rev. Flame above XVII Olympiad Rome 1960 legend. EF. **(\$125)**
- 456. **Italian Canoeing Federation Medal for the Rome Olympic Games, 1960.** Bronze, 36mm, by Lorioli. Large "XVII" behind Colosseum. Rev. Rowing Federation logo with rings over Olympic motto. Toned EF. **(\$100)**
- 457. **Silver Press Recognition Medal for the "Cronisti Romani" Newspaper for Coverage of the Rome Olympic Games 1960.** Sterling silver, 40mm, by Mistruzzi. Helmeted head of Roma in high relief. Rev. Legend. EF. **(\$125)**
- c458. **Colorful Large XVII Olympiad in Rome Silk Scarf.** Multicolor silk, 72x74cm (28.3"x29"). The Olympic Stadium and Marmirolo Stadium in center surrounded by landmarks of Rome and flags of participating nations. EF. **(\$200)**
- 459. **(Brochure) Shooting Regulations.** 39pp., 13.3x18.5cm (5.2"x7.3"), in French, English and Italian. Fold-out program in back. Stamp and name on cover, o.w. EF. **(\$75)**

- 460. **Full Ticket. Equestrian, September 11, 1960, Stadio Olimpico-Ippica.** Green, 24.5x9.6cm (9.6"x3.8"). EF. **(\$75)**
- 461. **Soccer World Cup in Chile, 1962. Commemorative Medal.** Silvered, partially enameled in color, 27x31mm. Soccer ball above stadium, globe and "Copa Jules Rimet -Chile 1962" below. VF-EF. **(\$100)**
- 462. **British Empire and Commonwealth Games Perth, Australia, 1962. Official's Badge.** Goldplated, blue and red enamel, 32mm. With yellow silk ribbon inscribed "OFFICIAL". EF. **(\$100)**
- c463. **INNSBRUCK, 9th OLYMPIC WINTER GAMES, 1964. Ice Hockey Gold First Place Winner's Medal.** Goldplated silver, 70mm, by M. Coufal. Alpine mountain, "Eishockey" below. Rev. Logo encircled by legend. With red-white-red ribbon, (faded, VF). One of 61 awarded medals. *The Soviet Union won gold on February 8, 1964.* EF. **(\$15,000)**
- 464. **Participation Medal.** Bronze, 61mm, by Welz. Innsbruck Olympic emblem within German legend. Rev. Innsbruck city view, Austrian Alps in background. EF, in original red wallet. **(\$375)**
- c465. **Official Logo and City View Gold Medal.** Gold, "900", 20mm, 3.5 grams, by Welz, struck by Austrian State Mint. Logo. Rev. City view. Reeded edge. Design similar to participation medal. EF. **(\$175)**

Please Bid Early!



466. **Commemorative Ski Jumper Pin.** Blue and black ceramic, edge trimmed in gold, 44mm. Ski jumper between Olympic rings and Innsbruck 1964 logo. VF-EF. (\$75)
- c467. **Official Car Plaque.** Gilt bronze, multicolor enamel, 70mm. EF. (\$125)
468. **Commemorative Olympic Cauldron Ashtray.** Cast bronze, 12.1cm (4.8"), 3.6cm (1.4") high. Tripod in the shape of the Olympic flame cauldron with Innsbruck logo inside. One color in center, o.w. EF. (\$100)
469. **Radio-TV Identity Card.** Black and white plastic wallet, 8.5x13.5cm (3.4"x5.3"). Contains ID card with photo and signature. EF. (\$125)
470. **Official Daily Program, Day 6, February 3, 1964.** 18pp., 12x17.1cm (4.7"x6.7"), in German, English and French. Creased, VF-EF. (\$80)
471. **Opening Ceremony Ticket, January 29, 1964,** 11 h, Bergisel Sprungschanze, Price S100.-. Pink, 6x11cm (2.4"x4.3"). Lt. discoloration lower edge, o.w. EF, with cord. (\$125)
472. **Alpine Skiing Season Ticket,** Price S 200.-. Yellow, orange border, 6x12cm (2.4"x4.7"), with cord. EF. (\$100)
473. **Luge Season Ticket,** Price S 110.-. Green, brown border, 6x12cm (2.4"x4.7"). With cord. EF. (\$100)
474. **Speed Skating Season Ticket,** Price S 170.-. Pink, orange border, 6x12cm (2.4"x4.7"). With cord. EF. (\$100)
475. **Group of Ten Different Ice Hockey Tickets.** Each ticket 14x8cm (5.5"x3.2"). Included are tickets for January 29 to 31, February 1 to 5, and February 7 and 8, 1964. Includes the finals ticket on February 8 when the Soviet Union team won gold. Eight with creases, VF to EF. (10 pcs.) (\$300)

TOKYO, 18th OLYMPIC GAMES, 1964

- c476. **Official Silver Olympic Police Medal.** Silver, 50mm. Cauldron between Olympic events. Rev. Chrysanthemum flower with Olympic rings. EF. With brochure in Japanese, cased, logo on top worn. Very scarce. (\$300)
- c477. **Commemorative Olympic Winner Medal.** Goldplated, 6cm (2.4"). Bust of laureated winner, legend at top. Rev. Dragon surrounding cauldron and panel with rings and legend. EF, cased. (\$150)
478. **Female Torchbearer Plaque.** Silvered brass, 14.5cm (5.7"), by Hata. Draped female torch bearer holding flaming torch, legend at top. Housed in wooden frame, EF. Scarce. (\$300)
- c479. **Gold Presentation Medal of the German Olympic Society in West Berlin, 1964.** Gold "900" hallmark, 26.79 grams, 55mm with bezel. 40mm medal shows the Berlin city shield. Rev. Berlin Liberty bell in open laurel wreath. Bezel (toned) inscribed and dated. EF, cased. (\$1,200)
- c480. **Official Olympic Village Badge.** Bronze, partially color enamel. 22x38mm. House on rock enameled in color and affixed to bronze pin. Olympic rings over bridge, "1964 Tokyo" below. Rev. Japanese legend. Unc., in box. (\$150)
481. **Olympic Cauldron Model (1965).** Blackened and silvered aluminum, 15cm (5.9") tall, base 11x11cm (4"x4"). Silvered cauldron with steps. EF. (\$250)
- c482. **Pair of British Commemorative Miniature Boxing Gloves.** Red leather, 90mm (3.5"). One with official Tokyo logo patch, the second with British flag patch. EF. (\$100)
- c483. **Commemorative Olympic Canoeing Event on Lake Sagami Silk Scarf.** Blue and gray with maroon border, 80x81cm (31.5"x31.9"). Canoe race on lake, city and mountain landscape in background. EF. (\$200)
484. **Commemorative Runners Lighter.** Multicolor, nickel plated, 36x58mm (1.4"x2.3"), made by Prince. Runners run over "Tokyo 1964" and rings. EF. (\$100)
485. **Commemorative Lighter.** Nickel-plated, 60x35mm, made by Prince. Red logo, color rings and "TOKYO 1964". Rev. "THE XVIII OLYMPIC GAMES". EF. (\$100)
486. **(Film) Men's Athletics 8mm Black and White Titled Film of the Tokyo 1964 Olympic Games.** EF. In plastic container, 18.7cm (7.4"). EF. (\$100)
487. **(Films) Pair of Women's Athletics Black and White 8mm Films.** In clear plastic cases, 13.3cm. EF. (2 pcs.) (\$125)
488. **Diploma for an American Team Official.** Red, gold and black, 18x38.2cm (7.1"x15"). EF. (\$275)