



682



683



683



684



685



686



687



688



690



691



- CALGARY, 15th OLYMPIC WINTER GAMES, 1988**
682. **Participation Medal.** Bronze, 64mm, by C. Martens. Calgary Olympic emblem, stylized snowflake design. Rev. Olympic motto under panorama of Calgary and Rocky Mountains. EF, in presentation case. (\$400)
683. **Cased Soviet Team Medal Set.** Bronze, 60mm (2) and 58mm, partially enameled in red. EF, in red case with Soviet legend. Pinholes on inside top. (\$200)
684. **Set of Ten Silver \$20 Coins, Calgary Olympic Winter Games, 1988.** Proof, FDC, housed in green velvet case. (\$300)
685. **"Magical Memories" Pin Set. Set of Eight Multicolor Cloisonné Pins.** Included are opening and closing ceremony, the pin plaza, medal awards, mascots with "Hats off to volunteers", etc. A special limited edition, framed and glazed. Unc. (\$100)
686. **Torch Relay Beer Stein.** Ceramic with color logo of torch relay, 13cm (5.1"), by TSC, Oakville, Ontario. EF. (\$100)
687. **(Brochure) Olympic Torch Relay Road Atlas.** 33pp., illustrated in color, 21.3x27.5cm (8.4"x10.8"), in English and French. Story of torch relay through Canada, November 17, 1987 to February 13, 1988, with maps. Lt. marginal creases, o.w. EF. (\$125)



696



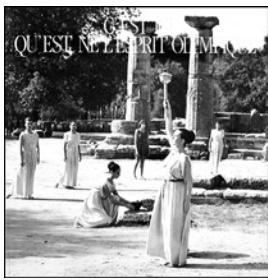
693



694

- SEOUL, 24th OLYMPIC GAMES, 1988**
688. **Official Torch.** Brass, 50cm (20"), with tan leather handle, designed by Lee Woo-Sing. Bowl depicts dragons, Seoul Olympic logo enameled in color below. EF. (\$9,500)
- c689. **Cased Silver Second Place Winner's Medal.** Silver, 61mm, made by Korea Security Printing and Minting Co. Victory seated over stadium. Rev. Dove of peace carrying laurel branch. Unawarded. Housed in blue velvet case, inside top lined in silk. EF. (\$5,500)
690. **Cased Participation Medal.** Bronze, 60mm, by K. Kwanghyun. South Gate below mountain, cloud, crane, and sun. Rev. Seoul Olympic emblem over English legend in two lines. EF, in presentation case. (\$400)

691. **Official Main Press Center Medal.** Bronze, 70mm. Official logo. Rev. Mascot Hodori between Korean and English legend. EF. (\$125)
- c692. **'88 Nagoya Olympic Games Bid Medal, 1988.** Silvered bronze, 65mm. Red and white enameled bid logo. Rev. Nagoya temple over flowers. *Seoul and Nagoya, Japan, were the only cities bidding for the 1988 Olympic Games.* EF, cased. (\$225)
693. **1988 Men's U.S. Olympic Team Watch by Bulova.** Goldplated, "1988 Olympic Team" on dial. With genuine black lizard watch band. Cased. EF. (\$300)
694. **1988 Ladies U.S. Olympic Team Watch by Bulova.** Goldplated, "1988 Olympic Team" on dial. With genuine black lizard watch band. Cased. EF. (\$300)
- c695. **Enameled Seoul 1988 IOC Presentation Box.** Multicolor enameled copper, 58mm, 30mm high, handmade by Crummies & Co., England. Seoul logo on top. EF. (\$175)
696. **Set of 50 Pins. U.S. Olympic Committee and Team Mascots Pin Set.** Gilt, multicolor cloisonné. Fifty pins depicting sports in which U.S. athletes participated; and Sam the Eagle participating in sports, and Sam pins spelling "Seoul 1988". Series I-B. All Unc., framed. (\$125)



697



698



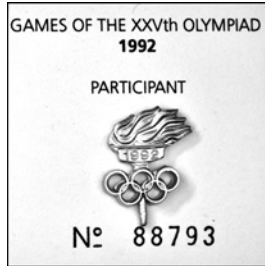
699



700



702



703



704



705



706

- c701. **Gold First Place Winner's Medal Awarded for Baseball.** Goldplated silver, 70mm, by X. Corberro. Victory seated above stadium. Rev. Barcelona logo of jumping athlete over Olympic rings. With ribbon. *Although IOC rules call for inscription of event on winners medals, the Barcelona medals were not inscribed.* EF, tiny rn. on rev. (\$7,750)
- 702. **Austrian Olympic Medal Winners Honor Plaque Presented by the Austrian Minister of Sports.** Silvered, 13x17cm (5.1"x6.7"). Affixed gold Austrian eagle over 8-line legend. EF, in blue leatherette case. (\$250)
- 703. **Participant's Pin Presented by the IOC.** Goldplated, 14x19mm. Unc. Numbered, in white plastic wallet. (\$100)
- 704. **Mascot Cobi with Jacket and Tie.** Multicolor polyester, 21.5cm (8.5"). Cobi wearing blue jacket and red-white striped tie. EF. (\$100)
- 705. **Olympic Museum Enameled Box with Clock (1993).** English multicolor hand enameled copper, 42mm, by Kingsley. Logo on top, inside top view of museum. Removable clock inside. EF, in presentation box. (\$175)
- 706. **Paralympic Games Opening Ceremony Ticket, September 3, 1992, Olympic Stadium.** Multicolor, 20.9x9.3cm. EF. (\$75)



707



708



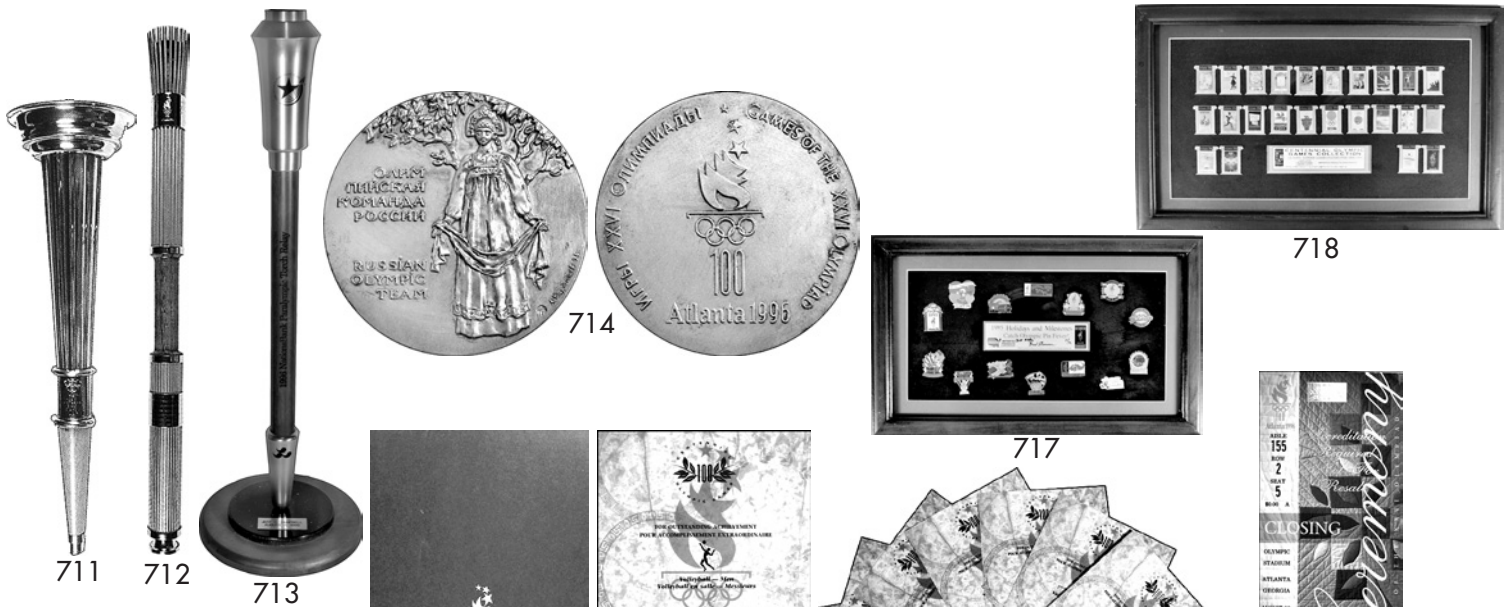
709

- 697. **(Brochure) C'est Ici Qu' Est Né l'Esprit Olympique.** ("It is here where the Olympic spirit was born", transl. from French.). Athens, 1988. 35pp. illus. in b&w and color, 26.3x27cm (10.3"x10.6"), published by the Greek Olympic Committee. Role of Greece in the Olympic movement, Olympic Games history and Greek participation, torch lighting, etc. Color covers. EF. (\$100)
- 698. **Track & Field World Championship in Barcelona 1989. Participation Medal.** Bronze, partially enameled, 65mm. "89" over 5 different colored stripes. Rev. View of Montjuïc Olympic Stadium. EF. (\$100)
- ALBERTVILLE, 16th OLYMPIC WINTER GAMES, 1992**
- 699. **Participation Medal.** Chrome-plated steel, 68mm, by R. Mayot. Albertville Olympic emblem within French and English legend. Rev. Star symbol over Alps and Olympic rings within French legend. EF. (\$500)

- BARCELONA, 25th OLYMPIC GAMES, 1992**
- 700. **Official Torch.** Chrome-plated aluminum, 65cm (23.6"), designed by André Rich. "XXV Olympiad Barcelona 1992" legend and Barcelona emblem goldplated on stem. EF. Very scarce and beautiful torch. (\$6,500)

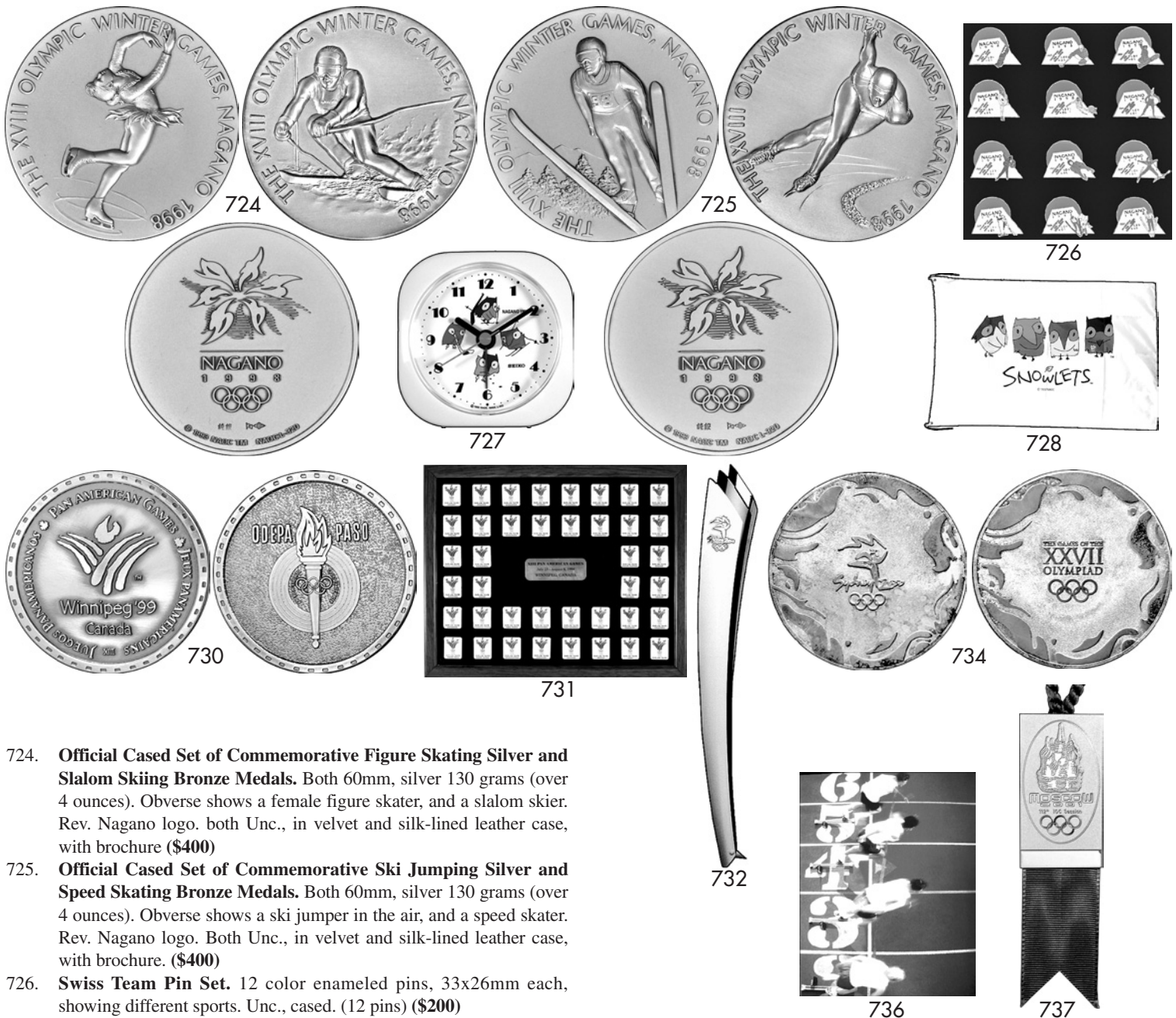
- LILLEHAMMER, 17th OLYMPIC WINTER GAMES, 1994**
- 707. **Official Torch.** Birchwood handle, 153cm (60") long, designed by A. Marandon and P.J. Kahrs. The upper part is cast aluminum with 5 wicks for lighting the torch with paraffin. This torch was used in the torch relay – the wicks are burnt, two hairline cracks on wood handle at top from the heat, abt. 20cm (7.9") long, ltly. soiled. Very scarce torch. (\$19,500)
- 708. **Participation Medal.** Copper, 66x76mm, by M. Kleppan. Pictograms of sporting events, ice crystals and Lillehammer Olympic emblem over Olympic rings. Rev. Modernistic ice crystal design with sports pictograms. EF, toning, in original wooden case. (\$400)
- 709. **Torch Relay Pin Set on Cardboard.** Multicolor, 29.6x41.8cm (11.7"x16.5"), displays the torch relay in Norway. EF. (\$175)

- ATLANTA, 26th OLYMPIC GAMES, 1996**
- c710. **Gold First Place Winner's Medal Awarded for Baseball.** Goldplated silver, 70mm, by Malcolm Grier Designers. Victory seated above stadium. Rev. Atlanta logo over laurel branches and pictogram. Edge engraved with name of event. With green and gold bordered ribbon with Atlanta logo. EF, pebbly appearance as finish on the medals was deficient. Housed in wooden presentation box. (\$9,000)



- 711. **Official Centennial Torch.** Silvered aluminum and wood, 55cm (21.65"). Names of all 23 Olympic cities from 1896 to 1996 inscribed on torch. *The Hellenic Olympic Committee celebrated the 100th Anniversary of the 1896 Olympic Games in the Panathenean Stadium in Athens on April 6, 1996. Part of this celebration was the re-enactment of the 1896 Games. Olympic medalists and representatives of all cities who had hosted the Olympic Games since 1896 took part in the torch run within the stadium. Afterwards, they took the torches back to their Olympic cities for a ceremony.* Unused. EF. **(\$2,750)**
- 712. **Official Torch.** Aluminum and Georgia pecan wood, 80cm (31.5") length, designed by Peter Mastrogiannis. 22 reeds represent the cities where Olympic Games were held since 1896. Gathered by 2 goldplated brass bands, the top band displays the Atlanta torch logo and the quilt of leaves design, the bottom band lists all Olympic cities since 1896. The wooden pecan handle represents the connection of the flame between heaven and earth. *The flame was lit in Olympia. It reached Los Angeles on April 27 and ended 84 days later in Atlanta, carried by 10,000 relay runners, horses, bicycles, trains, ships, and hydroplanes.* EF. **(\$2,750)**
- 713. **Paralympic Torch.** Wood and metal, 63.5cm (25") tall with Paralympic logo at top. Mounted on round marble and wood base, 23cm (9.1"), with name plaque and date of torch relay, August 11, 1996. EF. Very scarce torch. **(\$3,000)**

- 714. **Russian Team Silver Medal.** Silvered bronze, 50mm. Costumed female under laurel tree. Rev. Logo. EF, in Russian NOC case. **(\$125)**
- c715. **Very Rare Greek Ancient Sports Amphora.** Presented to President Samaranch and other High Dignitaries at the Dedication of the Atlanta Olympic Stadium on May 18, 1996. Multicolor, handpainted ceramic in the ancient Greek style, 48.3cm (19") high, made in Greece. One of only 20 impressive presentation vases. With wooden display stand and inscribed brass plaque. EF. **(\$3,500)**
- c716. **U.S. Olympic Athletics Team 1996 Beer Stein with Pewter Top.** Multicolor ceramic, 22cm (8.7") high, made by Ceramart, Brazil. Sprinter, hurdler and discus thrower in raised design, "1996 U.S. Olympic Team Atlanta" below. With pewter top. EF. **(\$125)**
- 717. **1995 Holidays and Milestones Pin Set for Atlanta 1996 "Catch Olympic Pin Fever!"**. Set of 14 multicolor cloisonné pins by Imprinted: Countdown, Valentine's Day and other celebratory pins. Set #82 of 96 made, signed by Imprinted president. Framed, Unc. **(\$100)**
- 718. **Centennial Olympic Games Poster Pin Set 1896-1996.** 24 pins, each goldplated and multicolor, 33x38mm each. All Unc. In wooden frame, under glass. **(\$150)**
- c719. **Mascots of the Summer Games Pin Set.** Seven multicolor goldplated pins, 41x33mm each. Waldi (1972), Amik, Misha, Sam, Hodori, Cobi, and Izzy (1996). Mounted, framed. EF. **(\$125)**
- 720. **Complete Set of Eight Men's Volleyball Winners Diplomas.** 21.5x30.2cm (8.5"x11.9"). Contains gold, silver and bronze diplomas and fourth through eighth place diplomas. Unawarded. All Unc., in green folder with gold logo. (8 pcs.) **(\$650)**
- 721. **Atlanta 1996. Closing Ceremony Full Ticket, August 4, 1996, 7:30 p.m., Olympic Stadium.** Multicolor, 9.5x22.2cm (3.7"x8.7"). EF. **(\$100)**
- NAGANO, 18th OLYMPIC WINTER GAMES, 1998**
- 722. **Official Torch.** Aluminum, partially gilt, 55cm (21.7") long, weight 1.5kg (3.3 pounds). Designed after ancient Japanese torches called Taimatsu. It shows the Nagano emblem and sports pictograms, and a brightly colored orange cord wrapped around the lower part forms the grip. Fueled with clean burning propane, it burnt for about 20 minutes. *The torch relay in Japan took place from January 6 until February 7, when the Olympic fire was lit during the opening ceremony.* Choice EF, in original cardboard box. **(\$5,500)**
- 723. **Participation Medal.** Bronze, 60mm. Nagano logo over legend. Rev. Wooded mountainside. EF, in box with gilt logo. **(\$375)**



724. **Official Cased Set of Commemorative Figure Skating Silver and Slalom Skiing Bronze Medals.** Both 60mm, silver 130 grams (over 4 ounces). Obverse shows a female figure skater, and a slalom skier. Rev. Nagano logo. both Unc., in velvet and silk-lined leather case, with brochure (\$400)
725. **Official Cased Set of Commemorative Ski Jumping Silver and Speed Skating Bronze Medals.** Both 60mm, silver 130 grams (over 4 ounces). Obverse shows a ski jumper in the air, and a speed skater. Rev. Nagano logo. Both Unc., in velvet and silk-lined leather case, with brochure. (\$400)
726. **Swiss Team Pin Set.** 12 color enameled pins, 33x26mm each, showing different sports. Unc., cased. (12 pins) (\$200)
727. **Nagano 1998 Winter. Commemorative Snowlets Alarm Clock.** 7x7cm (2.8"x2.8"), made by Seiko. Multicolor snowlets skiers and ice hockey players. EF, boxed. (\$125)
728. **Nagano 1998 Winter. Official Snowlet Banner.** Multicolor, 132x89.5cm (52"x35.2"). EF. (\$100)
- c729. **Commemorative Nagano 1998 Olympic Beer Stein.** Multicolor ceramic, 20.5cm (8.1") high, by Ceramarte, Brazil. Official color logo flanked by logos of 6 previous Olympic winter games. With pewter top. EF. Scarce. (\$125)
730. **XIII Pan American Games in Winnipeg, Canada, 1999. Participation Medal.** Silvered, 60mm. Winnipeg '99 logo. Rev. Pan-Am Games logo. EF. (\$100)
- c731. **U.S. Team Pin Set of the XIII Pan American Games in Winnipeg, Canada, 1999.** Each pin gilt, red, white and blue design, 26x32mm. 40 pins, housed in wood-like frame, glazed. EF. (\$125)

SYDNEY, 27th OLYMPIC GAMES, 2000

732. **Official Torch.** Three layers consisting of polished stainless steel, anodized aluminum and coated aluminum, 77cm (30.5"), designed by Blue Sky Design, Sydney, manufactured by G.A. & L. Harrington. The three layers represent earth, fire and water. EF, in original mailing box. (\$4,000)

- c733. **Silver Second Place Winner's Medal Awarded for Baseball.** Pure silver, 68mm, by Wojciech Pietranik. Victory seated above stadium. Rev. Olympic rings over Sydney opera house and Sydney torch. *Last time the obverse design, since 1928 Amsterdam, was on a winners medal. New design since Athens 2004.* With blue ribbon embroidered in silver "SYDNEY 2000". EF/abt. EF, sm. rns. on rev. (\$8,500)
734. **Participation Medal.** Silvered, 50mm. Sydney Olympic logo. Rev. 3-line legend over Olympic rings. EF, in original box. (\$275)
- c735. **Commemorative Mascots Porcelain Plate.** Multicolor, 19.5cm (7.7"), hand finished by Lush Creations, Australia. Oly, Syd and Millie on top of globe with Australia encircled by "Sydney 2000-Share the Spirit". EF. (\$100)
736. **Journey to the Sydney Games Book with Numbered Sydney Logo Lithograph. Released at the Sydney Logo Unveiling, September 1997.** Journey Book 22pp., illus. in color, 25x25cm (9.8"x9.8"). Plus blindstamped logo, 25x25cm, numbered 175/500. Boxed. Presented to dignitaries who attended the logo unveiling. EF. (\$125)
737. **112th IOC Session in Moscow, 2001. Organizing Committee Badge.** Goldplated, rings in color, 31x57mm. With blue cord, in maker's envelope. EF. (\$200)