



Lot 125: John Eshbach Collection of Olympic Summer Games Participation Medals

125



Lot 126: John Eshbach Collection of Olympic Winter Games Participation Medals

126



127

The John Eshbach Collection of Olympic Participation Medals. John collected participation medals since the 1980's. He was always willing to display his ever growing collection at numismatic shows, well into his 80's and even 2 months before his passing in December 2011. He won many prizes for the display. He was also an accomplished judge at the shows – well liked and respected by all. Most of the medals are still in the cardboard boxes displayed at the shows. They can be easily taken out, or they are ready for the next collector to exhibit them again.

125. **J. E. Complete Collection of Olympic Summer Games Participation Medals from Athens 1896 to Beijing 2008.** The Stockholm 1956 Equestrian medal comes with its presentation box,

and St. Louis 1904 is without a loop as presented to the athletes. Some with boxes. Almost all EF. (26 pcs). **(\$32,000)**

126. **J. E. Complete Collection of Olympic Winter Games Participation Medals from Chamonix 1924 to Vancouver 2010.** The Chamonix 1924 participation medal was also the 3rd place winners medal, and another key medal is Lake Placid 1932. Some with boxes. Almost all EF. (26 pcs). **(\$40,000)**

127. **Partial Collection of Olympic Summer Games Participation Medals.** From Athens 1896 to Sydney 2000, missing St. Louis 1904, Los Angeles 1932, Stockholm 1956 and Tokyo 1964. Paris 1900 World's Fair award medal included. Ten medals between 1952 and 2000 with their boxes. Almost all EF. (22 pcs.) **(\$9,000)**



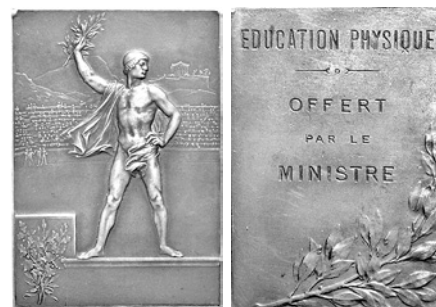
129



131



133



132



134

THE BRITISH OLYMPIAN GAMES IN 19TH CENTURY.

Dr. William Penny Brookes (1809-1895) was born in Much Wenlock where, in 1831, he became a doctor after his father's death. He saw a need for structured physical exercise and education for the town's working classes. In 1841 he founded the Agricultural Reading Society, and in 1850 the Wenlock Olympian Class. The first Wenlock Olympian Games were held in October 1850, and they continued every year to this day. The original objective of the Olympian Class was to "Promote the moral, physical and intellectual improvement of the inhabitants and neighborhood of Wenlock". In 1860, the Olympian Class became the Olympian Society. In 1861 the Shropshire Olympian Games were founded through the initiative of Penny Brookes. Pierre de Coubertin visited Penny Brookes in 1890 when also special Games were held for him. They made a lasting impression on him. (ex: Wenlock Olympian Society website).

- c128. **"First Prize Silver Winner's Cup for Tilting of the Ring on Horses at the Shropshire Olympian Games Third Annual Meeting Held at Wenlock September 24, 1862"**. Hallmarked silver, 22.1cm (8.7") high. A beautifully embossed cup with flowers and scrolls, and three different inscriptions, 2 quoted in the title. Plus "The Gift of Lord Forester September 1862". "The one event everybody wanted to see was called Tilting at the ring. The riders dressed in bright colors, and had to unhook a ring hanging down from a crossbar with a wooden pole. (Wikipedia and Wenlock Olympian Society). Extremely rare winner's cup, EF, toned. **(\$8,500)**

THE SHREWSBURY SHOW WITH OLYMPIC GAMES 1861.

Shrewsbury is the county town of Shropshire in the West Midlands region of England. In 1861 the town renewed the Shrewsbury Show which had not been held since the Middle Ages. The townspeople thought that it would be even more popular with "Olympic Games" as they had seen in Wenlock. The following Cup was awarded for the most popular event of the Olympic Games.

129. **First Prize Cup for Tilting at the Ring on Horses Awarded to Bromley Jones by the Committee of the Shrewsbury Show June 4th 1861.** Embossed silver cup with 8-line engraved inscription, 19.5cm (7.7") high, 16.5cm (6.5") wide. On the other side of the inscription is a beautiful embossed flower bouquet. Toned EF. Extremely rare winners cup. **(\$6,500)**

THIRD NATIONAL GREEK OLYMPIC GAMES, ATHENS, 1875

- c130. **Silver Winner's Medal.** Silver, 41mm by Barre, struck at Paris Mint. Head r. of King George I. Rev. 5-line Greek award legend in open laurel wreath. VF-EF, rms. and sm. rbs. Very rare. **(\$3,500)**

ATHENS, 1ST OLYMPIC GAMES, 1896

131. **Participation Medal.** Bronze, 50mm, by N. Lytras. Seated Nike holding laurel wreath, phoenix rising out of flames, Acropolis in background. Rev. 5-line Greek legend in laurel wreath. EF. **(\$1,750)**

PARIS, 2ND OLYMPIC GAMES, 1900

The 1900 Paris Olympic Games were held in conjunction with the World's Exposition. They played only a minor role. There were athletes who didn't know that the events they participated in were Olympic Games events. Few items relate directly to the Games. For this reason we are also offering items commemorating the World's Exposition.

132. **Bronze Award Plaque by the Minister of Sports.** Bronze, 41x59mm, by F. Vernon. Victorious athlete standing on podium. Rev. 4-line French award legend over laurel branch. Toned EF. **(\$900)**
133. **Judge's Plaque.** Silvered bronze, 36x50mm, by Roty. Rose and laurel branches over Paris exposition grounds. Rev. Young winged boy (New Century) taking torch from sleeping woman (19th Century). Toned EF. **(\$225)**
134. **French Republic Silver Award Medal for Exposition Workers.** Silver, hallmarked, 30mm, by Chaplain. Winged female carrying torchbearer over Paris, city shield below. Rev. 6-line French legend, name on panel. Looped, with ribbon in tricolor French colors. EF. Rare. **(\$300)**



135

136



138



139



140



141



143

144



147

135. **Award Medal.** Bronze, 61mm, by Chaplain. Head of French Republic r. Rev. Male with torch carried by female. *Since no participation medals were made in 1900, collectors like to add this medal to their collections.* EF. (\$300)
136. **The History Medal of the Paris Mint, 1900.** Bronze, 50mm, by D. Dupuis. Winged young nude cherub with torch leaning on coining press. Rev. History seated in clouds writing "1900" in book. EF. (\$125)
- c137. **Colorful Paris 1900 Exposition Painted Glass Pendant.** 28mm. View of the Entry to the Exposition. Rev. View of the Pont d'Alexandre III, Eiffel Tower in distance. Looped, in gilt brass frame. EF. Scarce. (\$175)
138. **Badge for an American Employee of the U.S. Postal Service at the Paris 1900 Exposition, September 16-30, 1900.** Stiff stock paper, 7.8cm (3.1"). Numbered. Abt. EF. Rare. (\$250)
139. **Large Silk Stevensgraph. The United States at the World's Exposition in Paris, 1900.** Black and cream, 25.5x29.5cm (10"x11.6"). U.S. Government building at river Seine, legend above. EF, 2 sm. tears not affecting picture. (\$100)
140. **Ticket to the World's Fair 1900.** Blue and white, 7.2x5.1cm (2.8"x2"). EF. (\$100)
141. **20 Francs Bond for the Paris 1900 World's Fair.** 8pp, green, 10.6x15.9cm (4.2"x6.3"). Exchangeable for reduced price entry tickets or reduced transportation fare to the exposition. One coupon of 2 used. Abt. EF. (\$125)

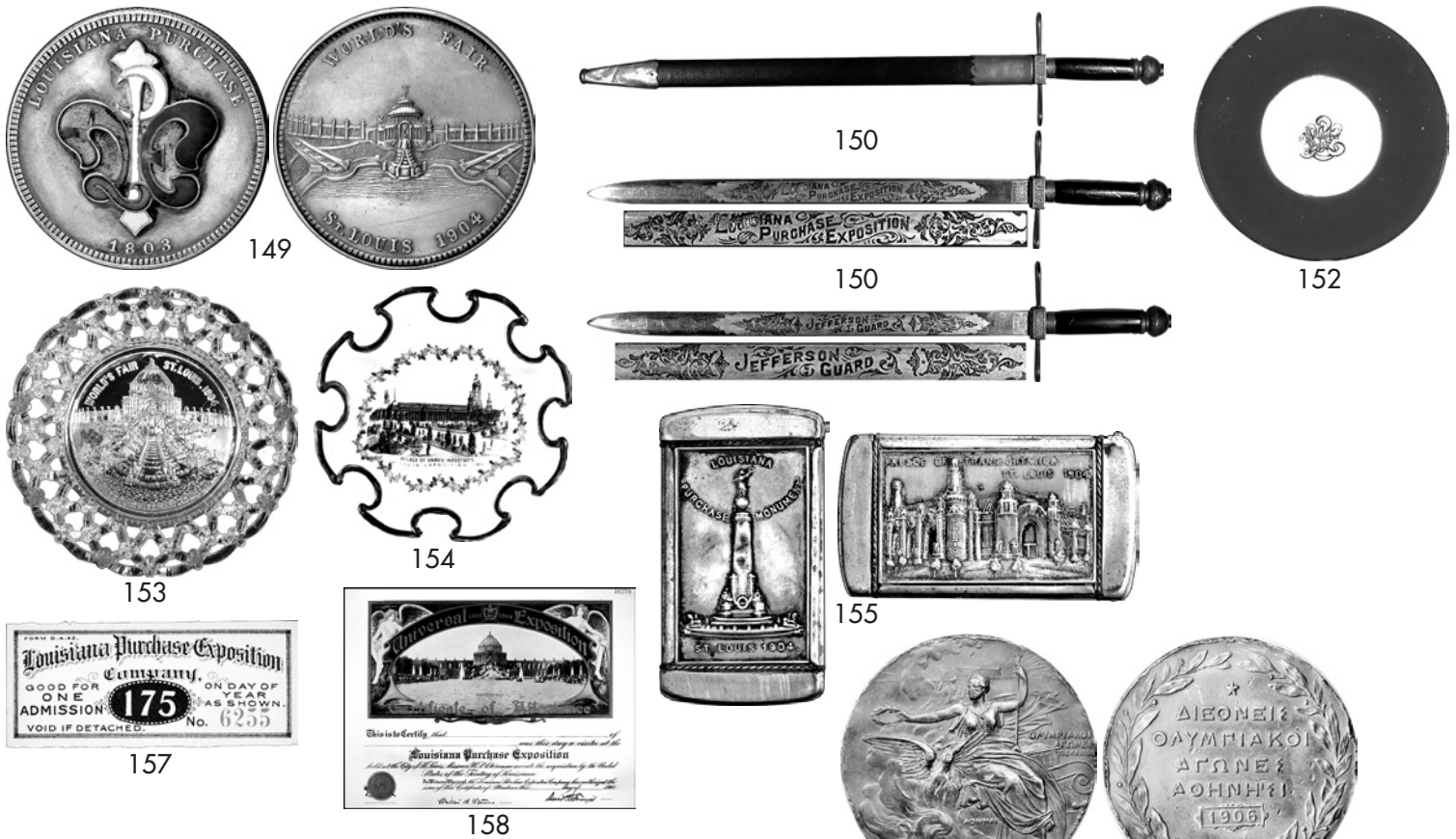
ST. LOUIS, 3rd OLYMPIC GAMES, 1904

The 1904 Olympic Games in St. Louis were also held in conjunction with a World's Fair. This, again, detracted a lot from the importance of the Games. Few items are available that relate directly to the Olympiad, and they usually command very high prices. For this reason we are also offering some memorabilia from the World's Fair which celebrated the Centennial of the Louisiana Purchase from Napoleon in 1803.



148

- c142. **Participation Medal.** Bronze, 40x40mm, made by Dieges & Clust, New York. Nude athlete striding r., laurel branch in hand. Rev. Legend in eleven lines, shields of St. Louis, France and U.S.A. between ivy leaves. With loop and ring. Toned EF. Very rare. (\$20,750)
143. **Grand Prize Medal of the St. Louis 1904 World's Fair.** Bronze, 60x73mm (2.5"x3"), by Weinmann. America cloaking Louisiana. Rev. Eagle with spread wings on panel with award legend. *Highest award of the 1904 Fair.* EF. (\$400)
144. **Gold Award Medal of the St. Louis 1904 World's Fair.** Triangular bronze, 70x71mm, by Weinberg. Louisiana cloaking Indian maiden. Rev. Eagle with outspread wings on panel with award legend. Toned EF, a few spots obv. (\$350)
- c145. **St. Louis Exposition 1904 Badge.** Goldplated, 55x40mm, multicolor enamel. French tricolor lys in center with "LPE 1904", over blue and gold enameled oval band. EF. Attractive logo badge. (\$450)
- c146. **Large Enameled Color Badge, St. Louis 1904.** Goldplated, 47x50mm, multicolor enamel. St. Louis French lily logo in center. EF. Beautiful badge. (\$450)
147. **St. Louis 1904 Flag Pin.** Gilt aluminum, 18x16mm. EF. (\$100)
148. **Official Bronze Souvenir Medal of the St. Louis World's Fair.** Bronze, 34mm. Conjoined busts l. of Napoleon and Jefferson. Rev. Map of U.S. with Louisiana Territory purchased in 1803. EF, a few spots. (\$100)



149. **Commemorative Medal of the St. Louis World's Fair, 1904.** Silvered, 36mm. Color enameled logo of the Fair, affixed. Rev. View of Cascade Gardens. Ruffled edge. EF. (\$100)
150. **Sword of the Jefferson Guard, the Security Force at the St. Louis 1904 World's Exposition.** 66cm (26") long, made by Ames Sword Co., Chicopee, Massachusetts. "JEFFERSON GUARD" and decorative flower motif. Rev. "LOUISIANA PURCHASE EXPOSITION" etched on sides of steel blade. "J.G." (for Jefferson Guard) on brass and wood hilt. Sheath is made of brass with black leather wrapping. Numbered. *The Jefferson Guard was a privately hired security force of several hundred men who patrolled the fair grounds including the Olympic Games site; they also served as unofficial guides.* VF-EF. Very rare. (\$1,500)
- c151. **Commemorative American Mandolin Harp, Special St. Louis Model, in Large Carrying Case.** Painted wood, 39.3x49cm (15.5"x19.3"). With multicolor handpainted flower border and view of Palace of Varied Industries. EF. With Self Instructor Booklet for the American Mandolin Harp, 12pp., 27.5x22cm (10.8"x8.7"), in English and German. VF. All housed in original suitcase – style large carrying case, lt. wear. Rare group. (\$400)
152. **Official Logo Porcelain Plate.** Green, edge gilt, 22.3cm (8.8"), manufactured by the Ohio China Co. Large logo of St. Louis 1904 Exposition in center. VF-EF. (\$100)
153. **Commemorative Clear Glass Plate of Festival Hall and Cascade Gardens.** 18cm, 7.3", center design goldplated. Open flower border. Lt. wear on goldplating o.w. EF. (\$100)
154. **Commemorative Gold and Black Porcelain Bowl.** 16cm (6.3"), made by Victoria, Carlsbad. View of Palace of Varied Industries, St. Louis Exposition 1904 legend below in gold flower border. Scalloped gilt edge, lt. wear on black legend, o.w. EF. (\$125)
155. **St. Louis 1904 Match Safe.** Silvered brass, 44x70mm (1.7"x2.8"). View of Palace of Transportation. Rev. Louisiana Purchase Monument at the Fair. EF/VF-EF. Scarce. (\$100)
157. **Ticket. Day 175, June 25, 1904.** Green and black, 68x29mm (2.9"x1.2"). EF. (\$100)

158. **Visitor's Certificate of Attendance to the World's Fair.** Black, green and gold, 32x24cm (12.6"x9.5"). View of Cascade Gardens surrounded by gold legend. Unissued. EF. (\$150)

ATHENS, INTERMEDIATE OLYMPIC GAMES, 1906

- c159. **Silver Second Place Winner's Medal.** Silver, 50mm, by J. Chaplain. Laureated head of Zeus facing holding winged statue of Victory with laurel branch on globe. Rev. View of Acropolis and Parthenon between Olympic legend. *Similar to 1896 winner's medal - only the date on the reverse was changed to 1906.* VF-EF/VF. (\$6,750)
- c160. **Bronze Third Place Winner's Medal.** Bronze, 50mm, by J. Chaplain. Laureated head of Zeus facing holding winged statue of Victory with laurel branch on globe. Rev. View of Acropolis and Parthenon between Olympic legend. *Similar to 1896 winner's medal - only the date on the reverse was changed to 1906.* Toned EF. (\$6,500)
161. **Participation Medal.** Bronze, 50mm, by N. Lytras. Seated Nike holding laurel wreath over phoenix emerging from flames, Acropolis in background. Rev. Greek legend in wreath. Dark toning, VF-EF, rms., uneven edge. (\$900)
162. **Victory and Panathenian Olympic Stadium Medal.** Bronze, 23mm. Winged victory with laurel branch. Rev. Aerial view of the stadium. Looped, toned VF. (\$125)

Please Bid Early!