



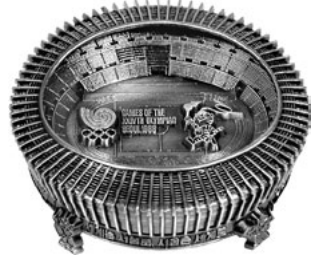
512



513



514



517



518



519



520



521



522



523



524

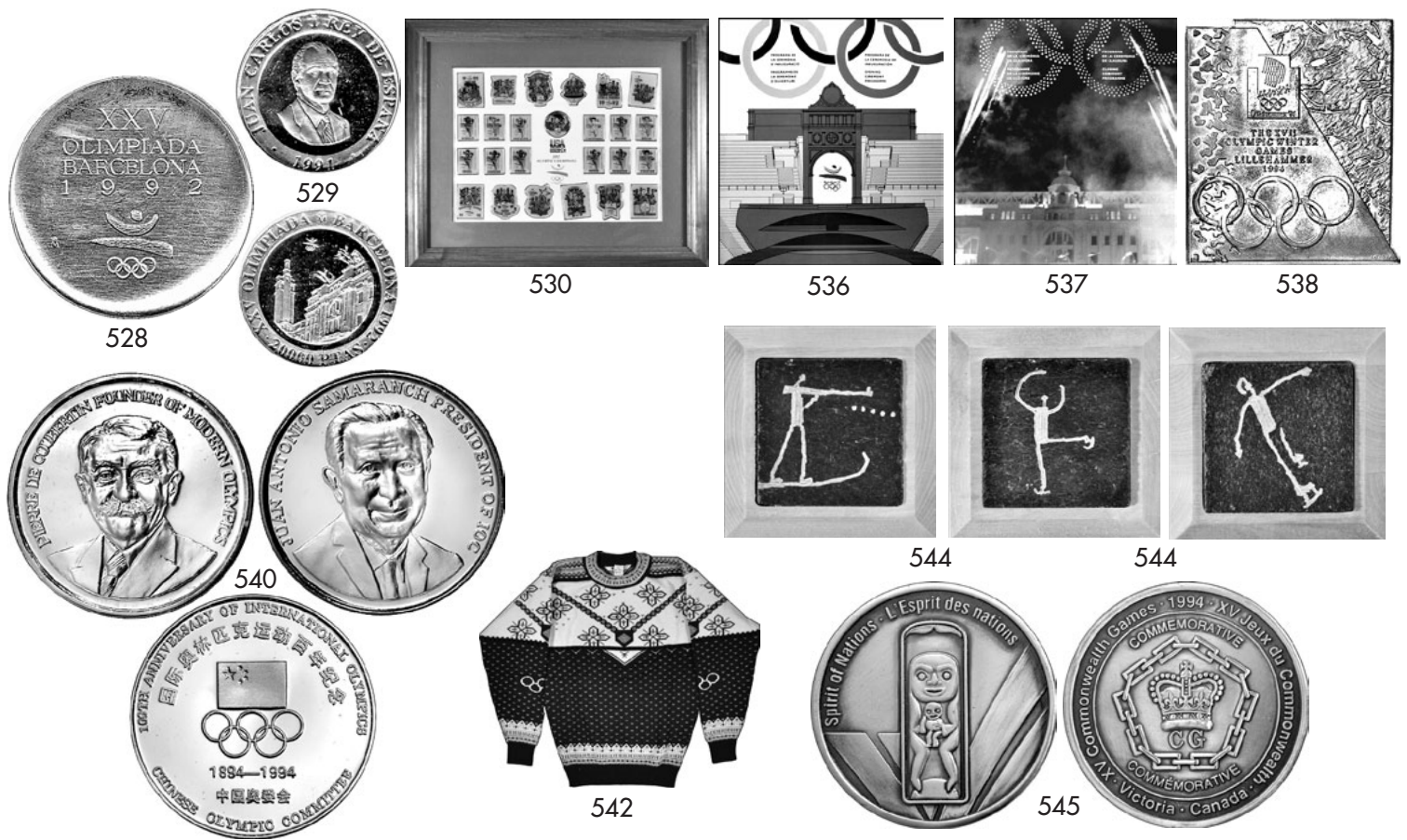


525

- 512. **Steffi Graf Tennis Pro Olympia 1988 Medal.** Bronze, 35mm. Bust of Steffi facing, tennis rackets at l. Rev. Logo within legend. Unc., in original box with brochure. (\$75)
- 513. **Commemorative Gymnastics Medal and Pin.** Silver, 38mm. Gymnast. Rev. Logo. Proof, Unc. Plus multicolor goldplated pin, 19x22mm. Unc. (2 pcs.) (\$75)
- 514. **Official Souvenir Baseball of the Seoul 1988 Olympic Games.** With facsimile signatures of Organizing Committee President under color logo, IOC President Samaranch, IBA President and Baseball Commissioner of the Korean Amateur Baseball Association. EF, with viewing stand. (\$125)
- c515. **Large Mascot Hodori Porcelain Plate.** Multicolor, 30.6cm (12"), by Charmstone, with the Compliments of San-Ho Cho, Minister of Sports. Hodori waving Korean flag in stadium, encircled by 26 depictions of Olympic Sports. EF. (\$150)
- c516. **Colorful Wedgwood 1988 Olympic Plate in Fine Bone China.** Multicolor, 23cm (9.1"). Korea's first national treasure, the South Gate, encircled by legend and nine Olympic sports, surrounded by the bright colors of the traditional Tanchong (ceiling paint). With leaflet, in original box. EF. (\$150)
- 517. **Commemorative Olympic Games Stadium.** Copper, 14.8x14.8cm (5.8"x5.8"), 5.3cm (2.1") high. Legend between Seoul logo and torch bearing mascot Hodori inside stadium, Korean and English Olympic legend around base. EF, in official case. (\$150)
- 518. **Commemorative Olympic Flame Cauldron Ashtray.** Brass, 15.8cm (6.2"). Eight different Hodoris on top, lions' feet at bottom. EF. (\$125)
- 519. **XIV Commonwealth Games in Auckland, New Zealand, 1990. Participation Medal.** Copper, 50mm. Crown over legend in chain circle, surrounded by spiral. Rev. Pohutukawa tree. With brochure, in blue presentation case. EF. (\$100)
- 520. **Third IAAF World Championship in Athletics, Tokyo 1991. Participation Medal.** Silvered, 47x60mm. Logo over "Tokyo '91". Rev. Legend. In presentation case. Unc. (\$100)

- ALBERTVILLE, 16th OLYMPIC WINTER GAMES, 1992**
- 521. **Participation Medal.** Chrome-plated steel, 68mm, by R. Mayot. Albertville Olympic emblem within French and English legend. Rev. Star symbol over Alps and Olympic rings within French legend. EF. (\$625)
  - 522. **Large Ski Jump Mascot Magique Oval Porcelain Plate.** 30.6x26.6cm (12"x10.5"). Red and blue jumping Magique, Albertville 92 logo in upper left. EF. (\$125)
  - 523. **Skating Mascot Magique Porcelain Plate.** 21x21cm (8.3"x8.3"), corners rounded. Blue and red skating Magique, Albertville 92 logo in upper l. EF. (\$100)
  - 524. **Large Oval Logo Porcelain Plate.** 30x26.5cm (11.8"x10.4"), distributed by Bos, Moutiers; Pyroflam porcelain, Sarreguemines, France. Large logo in upper left. EF. (\$125)
  - 525. **Large Oval Olympic Venues Porcelain Plate.** 29.7x26cm (11.7"x10.2"), designed by J.C. Tourte. View of Olympic sites with pictograms, logo above. EF. (\$125)





c526. **1992 Albertville U.S. Team Medal Awards Jacket by Head Sportswear.** Men's large size, made of micronyl nylon. EF. **(\$250)**

**BARCELONA, 25th OLYMPIC GAMES, 1992**

c527. **Bronze Third Place Winner's Medal.** Bronze, 70mm, by X. Corberro. Victory seated above stadium. Rev. Barcelona logo of jumping athlete over Olympic Rings. *Although IOC rules call for inscription of event on winners medals, the Barcelona medals were not inscribed.* A few sm. rim nicks, toned EF. **(\$6,000)**

528. **Participation Medal.** Burnished copper, 70mm, by X. Corberro. Spanish legend in four lines over Barcelona Olympic emblem, a stylized jumping athlete. Rev. Spiral and elongated bolt of lighting. EF, in original pouch. **(\$225)**

529. **(Coins) Gold 20,000 Pesetas, 1991, Olympics – Montjuic Stadium.** KM-898. Unc., in original wooden box. **(\$275)**

530. **Basketball Dream Team Olympic Champions Pin Set.** Group of 25 multicolor pins, domed. 13 featuring the team, 12 featuring the individual players such as Jordan, Bird, Pippen, Johnson, etc. Mounted in wood-like frame, under glass, 40x33cm. EF. **(\$200)**

c531. **Iraqi National Olympic Committee Plate.** Silver color, 11.7cm (4.6"), multicolor engraving. Iraq NOC logo between Arab and English legends. EF. **(\$75)**

c532. **Opening Ceremony T-Shirt and Pin.** T-shirt large size. Colorful Cobi with flaming torch, opening ceremony text below. Same design on color Coca-Cola pin, 15x29mm. EF. (2 pcs.) **(\$75)**

c533. **Paralympic Plush Mascot Petra.** Multicolor, 32cm (12.6") tall. EF. Very scarce. **(\$250)**

c534. **Large Paralympics Barcelona '92 Mascot Petra Color Print.** Special Edition of 500, designed by Javier Mariscal. 4pp., 30x42cm (11.8"x16.5"). Signed by O.C. President P. Maragall i Mira. EF. **(\$200)**

c535. **Large Paralympics Barcelona '92 Logo Color Print.** Special edition of 500, designed by Josep Maria Trias. 4pp., 30x42cm (11.8"x16.5"). Signed by O.C. President P. Maragall i Mira. EF. **(\$200)**

536. **Opening Ceremony Program, July 25, 1992.** 65pp., illus. 29x32cm (11.4"x12.6"), in English. EF. **(\$150)**

537. **Closing Ceremony Program, August 9, 1992.** 38pp., 29x32cm (11.4"x12.6"), illustrated in b&w and color, in 4 languages. Color covers. EF. **(\$150)**

**LILLEHAMMER, 17th OLYMPIC WINTER GAMES, 1994**

538. **Boxed Participation Medal.** Copper, 66x76mm, by M. Kleppan. Pictograms of sporting events, ice crystals and Lillehammer Olympic emblem over Olympic rings. Rev. Modernistic ice crystal design with sports pictograms. EF, toning, in original wooden case. **(\$400)**

c539. **IOC Centenary Medal, 1994.** Goldplated bronze, 70mm, 7mm thick. "1894 1994" over 5 Olympic rings. Rev. "Centenary Medal" in English and French. Plus goldplated pin, 16mm, with white ribbon, stripes in Olympic colors. **(\$200)**

540. **Centennial of the Restoration of the Olympic Games 1994.** Silvered and goldplated copper, 40mm, struck by Shanghai Mint. Facing bust of Coubertin, and of IOC President Samaranch. Rev. Chinese NOC logo over 1984 - 1994. Proof, Unc, in lacquered case, with brochure in English and Chinese. **(\$125)**

c541. **U.S. American Team Sweater with Flag, Stars and Stripes, and Olympic Rings.** Multicolor wool, medium size, made by Champion. EF. **(\$450)**

542. **U.S. American Team Wool Sweater for Figure Skaters.** Multicolor, XXS size, made by Champion. EF. **(\$285)**

c543. **U.S. American Team Wool Sweater for Ice Hockey Players.** Multicolor, XXL size, made by Champion. Norway theme design. EF. **(\$325)**

544. **Trio of Pictograms Etched on Stone from Gudbrandsdalen and Mounted in Birch Wood Frame.** 8.9x8.9cm (3.5"x3.5"). Biathlon Shooter, Figure Skater and Short Track Speed Skater. With descriptive cardboard (worn). EF. (3 pcs.) **(\$125)**

545. **XV<sup>th</sup> Commonwealth Games in Victoria, B.C., 1994. Participation Medal.** Bronze, 50mm, by R. Krentz. Spirit of Nations standing on globe holding a baby. Rev. Official logo. EF, with leaflet. **(\$100)**



550



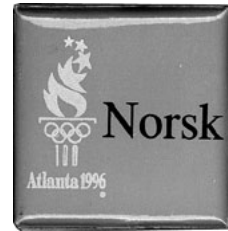
551



552



553



554



555

- c549. **Cased Paralympic Gold First Place Winner's Medal.** Goldplated, 82mm (3.2"). Paralympic Atlanta 1996 logo and legend. Rev. Braille legend over Paralympic logo. Looped, with blue ribbon. In green cardboard presentation box with green velvet inside. Unc. **(\$3,000)**
550. **Cased Paralympic Silver Second Place Winner's Medal.** Silver, 82mm (3.2"). Paralympic Atlanta 1996 logo and legend. Rev. Braille legend over Paralympic logo. Looped, with purple ribbon. In green cardboard presentation box with green velvet inside. Unc. **(\$2,500)**
551. **Boxed Participation Medal.** Bronze, 60mm. Official torch logo. Rev. Quilt of leaves. Unc, in pouch and box. **(\$175)**
552. **Czech Interpreter's Badge.** Blue, gold logo and black "Ceřtina", 38x38mm. EF. **(\$65)**
553. **Japanese Interpreter's Badge.** Blue, gold logo and black Japanese legend, 38x38mm. EF. **(\$65)**
554. **Norwegian Interpreter's Badge.** Blue, gold logo and black "Norsk", 38x38mm. EF. **(\$65)**
555. **Russian Interpreter's Badge.** Blue, gold logo and black Cyrillic legend, 38x38mm. EF. **(\$65)**
- c556. **(Autographs) Kerri Strug's 1996 Olympic Practice Leotard with Six Signatures of Seven Gymnastics Gold Medal Winning Team Members.** Signed by A. Borden, A. Chow, J. Phelps, Shannon Miller, Dominique Moceanu and Kerri Strug. With photo of Kerri and certificate of authenticity. EF. **(\$400)**
- c557. **Autographed Pair of Gymnastics Gold Medalist Kerri Strug Beam Shoes.** Size 4. Kerri wore the shoes in 1996 in competition and practices. With 2 photos: Kerri on beam in Atlanta Olympic Games, and Kerri signing shoes. With certificate of authenticity. **(\$275)**
- c558. **(Autographs) Kerri Strug's 1994 World Championship Leotard Signed by the 1996 Olympic Gold Medal Gymnastics Team.** Members Shannon Miller, Kerri Strug, Jaycie Phelps, Amanda Borden, Amy Chow, Dominique Dawes. The same team won silver at the 1994 World Championship. EF, with photo and certificate of authenticity. **(\$375)**
559. **(Autograph) Gymnastics Gold Medal Winner Kerri Strug Signed Photo.** Black and white, 25.3x20.3cm (10"x8"). Kerri on Balance Beam in Atlanta 1996. Plus two photos of Kerri signing photo. (3 pcs.) **(\$100)**
560. **(Autograph) 4 x 400m Gold Medal Team Winner Derek Mill Signed Relay Baton.** Gold colored, 29.7cm (11.2") long. Atlanta logo, signed in black "Derek Mills 4x400 Gold '96". EF. **(\$200)**
561. **(Autograph) Horseshoe of Joly Coeur – Franke Sloothaak won Jumping Team Gold in Atlanta on Joly Coeur.** With signed color photo of Sloothaak. Mounted on wooden plaque, 18x25cm (7.1"x9.8"). EF. **(\$200)**



559



560



561

- c546. **U.S. Olympic Festival in Denver, Colorado, 1995. Commemorative Award Medal Set of Gold, Silver and Bronze Winners Medals.** 70mm each. Logo. Rev. Rendition of sport. With ribbons, mounted for display, with explanatory panel. Housed in a shadow box, 30.8x25.8cm (12.1"x10.2"). EF. **(\$300)**

#### ATLANTA, 26th OLYMPIC GAMES, 1996

- c547. **Gold First Place Winner's Medal Awarded for Baseball.** Goldplated silver, 70mm, by Malcolm Grier Designers. Victory seated above stadium. Rev. Atlanta logo over laurel branches and pictogram. Edge engraved with name of event. With green and gold bordered ribbon with Atlanta logo. EF, Peppy appearance as finish on the medals was deficient. Housed in wooden presentation box. **(\$9,750)**
- c548. **Cased Gold, Silver and Bronze Winner's Medal Presentation Set.** Goldplated, silver and bronze, 70mm, by Malcolm Grier Designers. Victory seated above stadium. Rev. Atlanta logo over laurel branches and pictogram. Each medal with green and gold bordered ribbon with Atlanta logo. All EF, even the gold medal. Housed in large wooden presentation case with Atlanta logo on top. Very rare. **(\$12,500)**





563



564



565



566



567



568



569

c562. **Commemorative Centennial Olympic Games Beer Stein.** 20cm (7.9") tall, handmade by Ceramarte, Brazil for Anheuser-Busch. Color logo, illustrations for summer games 1956, 1932, 1900 on the left, and 1948, 1956 Equestrian on the right. With pewter top. New, in original box. **(\$100)**

563. **(Autographs) 1996 USA Softball Women's Team Guide.** 51pp., illustrated in color, 21.5x17.9cm (8.5"x7"). 20 full-page photos and text for 15 team members and 5 alternates of the gold medal winning team, plus 14 full-page photo pages with autographs. EF. **(\$250)**

564. **106<sup>th</sup> IOC Session in Lausanne, 1997. Badge with Black-White Ribbon.** Goldplated, 31x56mm. EF. **(\$200)**

#### NAGANO, 18th OLYMPIC WINTER GAMES, 1998

565. **Boxed Participation Medal.** Bronze, 60mm. Nagano logo over legend. Rev. Wooded mountainside. EF, in box with gilt logo. **(\$375)**

566. **Ice Hockey Commemorative Medel.** Bronze, 60mm. Ice hockey player trying to score. Rev. Large logo. EF. **(\$150)**

567. **Slalom Skier Commemorative Medal.** Bronze, 60mm. Slalom skier. Rev. Large logo. EF. **(\$150)**

568. **Speedskating Commemorative Medal.** Bronze, 60mm. Speedskater. Rev. Large logo. EF. **(\$150)**

569. **U.S. American Team Pin Set.** Multicolor enamel. In wooden case, under glass. Each athlete and some officials received a set from the U.S.O.C. They were never available to the public. New. **(\$350)**

c570. **Rare Official Presentation Small-Size Nagano Torch.** 27.7cm (10.9"). Only a very small number of these torches was made for presentation to high dignitaries, never for sale to the public. Torch is housed in a wooden case, lined with green velvet. Brass plate commemorating the torch run Jan. 6 - Feb. 6, 1998. EF. Very rare. **(\$2,500)**

c571. **Set of Four Plush Snowlet Mascots.** 13.5cm (5.3") each. EF. Very scarce. **(\$400)**



576



577

c572. **Commemorative Snowlets Thermometer and Hygrometer.** Wood, 12.7x12.7cm (5"x5"). Nagano color logo on dial face, the four color snowlets in corners. EF. **(\$125)**

c573. **Snowlet Mascots Savings Bank.** Multicolor, 8cm (3.1"). Four snowlets and Nagano logo, multicolor star background. Filled with candy, in original packaging. EF. **(\$75)**

c574. **Paralympic Mascot.** Multicolor felt, 10cm (3.9"). New. **(\$90)**

c575. **Nizuhiki Present from the Organizing Committee.** 6x14cm (2.4"x5.5"). Pine bamboo grass and ume (Japanese plum) flower with gold and silver thread woven into the ring, representation of good fortune and obedience. In presentation box, with descriptive brochure. EF **(\$100)**

#### SYDNEY, 27th OLYMPIC GAMES, 2000

576. **Participation Medal.** Silvered, 50mm. Sydney Olympic logo. Rev. 3-line legend over Olympic rings. EF, in original box. **(\$275)**

577. **111<sup>th</sup> IOC Session in Sydney, 2000. Named IOC Member's Badge.** Silvered, orange center, 39x48mm. With white ribbon. EF. **(\$300)**