



TORCHES OF THE OLYMPIC GAMES SUMMER GAMES TORCHES

1. **Berlin 1936. Official Torch.** Steel, 27cm high (10.5"), made by Krupp Factory, designed by Carl Diem. Carried during the first torch relay from Olympia, Greece to Berlin, a distance of 3075 km in 12 days. EF, hairline scs. on top. **(\$4,000)**
2. **London 1948. Rare Official Torch with Burning Unit.** Aluminum alloy, 47cm (18.5"). Cut-out rings over London Olympiad legend at top. Magnesium-based fuel gave the torch a bright flame. Unused. EF. Very rare with burning unit. **(\$6,500)**
3. **London 1948. Official Torch.** Aluminum alloy, 47cm (18.5"). Cut-out rings over London Olympiad legend at top. Magnesium-based fuel gave the torch a bright flame. Abt. EF. **(\$5,500)**
4. **Mexico City 1968. Official Black Torch.** Black painted aluminum, part of shaft made of wood, 52.3cm (20.9"). Silver colored doves around top. The black torch was used in the torch run from Olympia to Athens, Greece. EF. **(\$2,250)**
5. **Mexico City 1968. Official Silver Torch.** Silver color, part of shaft made of wood, 53cm (21") high. Circle of doves around top. Used in the torch relay in Mexico. Abt. EF, lt. wear. **(\$2,250)**
6. **Munich 1972. Official Torch.** Steel, 73cm (28.8") made by Krupp. The fire was lit in Olympia, Greece on July 28 and carried 5539 km in 29 days to Munich by 5976 runners. EF, lt. wear. **(\$2,000)**
7. **Montreal 1976. Official Torch.** Aluminum, 66cm (30") tall. Stem painted red, with Montreal logo, top painted black. Designed by George Huel and Michael Dall. The flame was carried from Olympia, Greece to Athens where it was transferred by satellite to Ottawa; 245 runners carried it to Montreal. EF. **(\$3,000)**
8. **Moscow 1980. Official Torch.** Aluminum alloy, gray and gold. Moscow logo and legend in red, 56.1cm (22-1/2") tall, designed by Boris Tuchin. Runners carried the torch during the 30-day torch relay from Olympia, Greece through Bulgaria and Romania to Moscow, a distance of 4976 km. EF, lt. wear. **(\$1,600)**
9. **Los Angeles 1984. Official Torch.** Brass-finished aluminum with tan leather handle. Bowl portrays Olympic rings, motto and L.A. Memorial Coliseum Stadium. Flame lit in Olympia, Greece on May 7, 1984, and it arrived in New York the following day. It took 82 days to carry the flame through 33 states, 9,375 miles, to Los Angeles. EF, in original black leather pouch. **(\$3,000)**
10. **Seoul 1988. Official Commemorative Torch.** Brass, 41.7cm (16.4") tall, designed by Lee Woo-Sing. Tan leather handle. Bowl depicts dragons, Seoul Olympic logo enameled in color below. Mounted on black base, 15x15cm (5.9"x5.9"), 13cm (5.1") tall. EF. **(\$1,000)**
11. **Barcelona 1992. Official Torch.** Chrome-plated aluminum, 65cm (23.6") tall, designed by André Rich. "XXV Olympiad Barcelona 1992" legend and Barcelona emblem goldplated on stem. VF-EF, lt. pitting on handle. Very scarce torch. **(\$4,500)**

Please Bid Early!



12



13



14



15



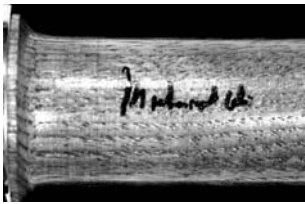
16



17



18



13



19



20



21

12. **Athens 1996. Centennial Torch.** Silvered aluminum and wood, 55cm (21.65"). Names of all 23 Olympic cities from 1896 to 1996 inscribed on torch. *The Hellenic Olympic Committee celebrated the 100th Anniversary of the 1896 Olympic Games in the Panathenean Stadium in Athens on April 6, 1996. Part of this celebration was the re-enactment of the 1896 Games. Olympic medalists and representatives of all cities who had hosted the Olympic Games since 1896 took part in the torch run within the stadium. Afterwards, they took the torches back to their Olympic cities for a ceremony.* Unused. EF. **(\$2,000)**
13. **Atlanta 1996. Muhammad Ali Signed Official Torch.** Aluminum and Georgia pecan wood, 80cm (31.5") length, designed by Peter Mastrogiannis. 22 reeds represent the cities where Olympic Games were held since 1896. Gathered by 2 goldplated brass bands, the top band displays the Atlanta torch logo and the quilt of leaves design, the bottom band lists all Olympic cities since 1896. The wooden pecan handle represents the connection of the flame between heaven and earth. *The flame was lit in Olympia. It reached Los Angeles on April 27 and ended 84 days later in Atlanta, carried by 10,000 relay runners, horses, bicycles, trains, ships, and hydroplanes. Muhammad Ali lit the cauldron at the Opening Ceremony;* he signed this torch with a black marker. EF. **(\$2,500)**
14. **Atlanta 1996. Official Torch.** As preceding torch, without Muhammad Ali signature. EF. **(\$1,750)**

15. **Sydney 2000. Official Torch.** Three layers consisting of polished stainless steel, anodized aluminum and coated aluminum, 77cm (30.5"), designed by Blue Sky Design, Sydney, manufactured by G.A. & L. Harrington. The three layers represent earth, fire and water. EF. **(\$2,250)**
16. **Athens 2004. Official Torch.** Silver colored metal and olive wood, 68cm (26.8") tall. The torch resembles an olive leaf, and the design wants to express "Pan Metron Ariston" (all things in moderation, translated from Greek). A simple and beautiful design. EF. **(\$1,650)**

WINTER GAMES TORCHES

17. **Cortina 1956 Winter. Official Torch.** Aluminum, 47cm (18.5") tall. "VII° GIOCHI OLIMPICI INVERNALI CORTINA 1956", legend, cut-out Olympic rings at top. *The flame was lit at the Temple of Jupiter in Rome on January 22, 1956, and flown to Venice. The torch relay from there went to Cortina, where the fire was lit in the stadium at the opening ceremony on January 26 by Guido Caroli.* One of less than 20 torches. Small bump, VF-EF. Very rare. **(\$30,000)**
18. **Lillehammer 1994 Winter. Official Souvenir Torch.** 60cm (23.8"), wood and metal, engraved with 6 winter events. Accompanied by wooden display stand, 31cm (12.2") tall featuring Lillehammer logo and torch runner. EF. In original pictorial box. **(\$200)**
19. **Nagano 1998 Winter. Official Torch.** Aluminum, partially gilt, 55cm (21.7") tall, weight 1.5kg (3.3 pounds). Designed after ancient Japanese torches called Taimatsu. It shows the Nagano emblem and sports pictograms. A brightly colored orange cord wrapped around the lower part forms the grip. Fueled with clean burning propane, it burnt for about 20 minutes. *The torch relay in Japan took place from January 6 until February 7, when the Olympic fire was lit during the opening ceremony.* Choice EF, in original cardboard box. **(\$5,000)**
20. **Salt Lake City 2002 Winter. Official Torch.** Silver colored metal and glass, 83.8cm (33") tall. Shaped like a fiery icicle in motion, the polished silver colored bottom bears the motto "Light the fire within"; center metal and glass top section in "frozen flame" texture with logo on metal part. EF. **(\$1,800)**
21. **Torino 2006 Winter. Official Torch.** Blue techno-polymer-coated aluminum, 77cm (30.3") long, made by Pininfarina. *The fire was lit in Olympia on November 27, 2005, and arrived in Rome on December 8. From Rome to February 10 the torch traveled over 11,300 km across Italy, also France, Switzerland and Slovenia.* This torch was used in the torch relay and shows lighter coloring at the top where the flame burned. Abt. EF. **(\$1,750)**

OFFICIAL REPORTS OF THE OLYMPIC GAMES

22. **Official Report. Athens 1896.** Reprinted in 1986 by the Greek Olympic Committee in Greek, French and English. 155pp. text plus 12 photographic plates. Cover lt. corner creases, contents EF. (\$175)
23. **Official Report. Athens 1906 Intermediate Olympic Games.** By P. Savvidis. According to the reports of the Olympic Committee. 164pp., 222 illus., 30x22cm oblong, text in Greek, photo captions in Greek and French. Blue linen goldstamped, stained, contents VF-EF. Better than average condition. (\$1,000)
24. **Official Report. Stockholm 1912.** 1067pp., 305 photographic plates, in Swedish. Extensive report on the Stockholm Games with results; rules and regulations for all events, etc. Bound in blue linen, scuffed, sunned spine, contents EF. (\$500)
25. **Official Report. Paris and Chamonix 1924.** Text in French, 852pp. illustrated. Report on the Paris 1924 Games, the Art Competition, Results, Prizes, etc. Includes also a 195-page report of the First Olympic Winter Games in Chamonix. Blue embossed linen gilt, leather spine scuffed, edges worn, contents EF. (\$750)
26. **Official Report. Amsterdam 1928.** Text in Dutch. 1042pp., heavily illus., fold-out charts in back. Blue linen gilt, scuffed, contents EF. (\$500)
27. **Official Report. Lake Placid 1932 Winter.** Compiled by G.M. Lattimer (1932). 287pp., illus. Blue linen with gold embossed participation medal on cover. Lt. wear on covers, contents EF. (\$375)
28. **Official Report Bound in Leather. Los Angeles 1932.** 815pp. illustrated in b&w and color, in English language. Spine with raised bands, goldstamped, corners and spine scuffed, contents EF. (\$800)
29. **Official Report. Los Angeles 1932.** Published by the Organising Committee. 815pp. illus. in b&w and color, many color plates. Linen, orange and black embossed design, scuffed, contents EF. (\$600)
30. **Official Report. Garmisch-Partenkirchen 1936 Winter.** Text in German. 450pp., many photos, charts and color plates. *The report was only published in German language.* Blue linen gilt, lt. scuffing, contents EF. Very scarce. (\$750)
31. **Official Report. Berlin 1936.** Text in German. 2 volumes, 1222pp., heavily illus., many plates, some in color. Linen gilt with blind-stamped gold eagle with Olympic rings. Covers foxed, ltly soiled, contents EF. (2 vols.) (\$750)
32. **Official Report. St. Moritz 1948 Winter.** Text in French Language. 78pp., illus., 17.3x24.5cm (6.8"x9.6"). Stiff covers. EF. Scarce in this condition. (\$900)
33. **Official Report. London 1948.** Text in English. 580pp. illustrated with numerous plates. Green cloth, stains, contents EF. (\$500)
34. **Official Report. Helsinki 1952.** Text in Finnish. 769pp., heavily illus., many plates. Half leather gilt, spine raised, ltly. scuffed, contents EF. (\$400)
35. **Official Report. Stockholm 1956 Olympic Equestrian Games.** Text in Swedish and English. 270pp. illus., 4 maps in back pocket. Blue linen gilt. Ltly. scuffed, contents EF. (\$525)
36. **Official Report. Melbourne 1956.** Text in English. 760pp., illus., EF. (\$525)
37. **Official Report. Rome 1960.** Text in English. 2 volumes, 893pp. and 1054pp., many illustrations, some in color. Blue leatherette covers, gilt, EF. (2 vols.) (\$850)
38. **Official Report. Rome 1960.** Text in Italian. 2 vols., 893 and 1048pp., many illus., some in color. Blue leatherette covers gilt, VF-EF. (2 vols.) (\$650)
39. **Official Report. Innsbruck 1964 Winter.** Text in German. 350pp., illus. Soft covers in color, corners ltly. creased, contents EF. Scarce report. (\$500)
40. **Official Report. Grenoble 1968 Winter.** 408pp., illus., in b&w and color. In French and English. EF. Green linen gold stamped, in gilt linen slipcase, stains. (\$550)



55

41. **Official Report. Munich 1972.** Text in German. 3 volumes, well illustrated. Linen, in different colors, EF. (3 vols.) (\$400)
42. **Official Report. Innsbruck 1976 Winter.** Text in German, French and English. 316pp. illus. Stiff covers, EF. (\$450)
43. **Official Report. Montreal 1976.** Text in English. 3 volumes. Vol. I: Organization, 618pp.; Vol. II: Facilities, 239pp.; Vol. III: Results, 698pp. Profusely illustrated, in red slipcase. (3 vols.) EF. (\$550)
44. **Official Report. Moscow 1980.** Text in Russian. 3 vols., 1411pp. total, illus. in color. Red, blue and green linen, in slipcase. EF. (\$575)
45. **Official Report. Los Angeles 1984.** Text in English language. 2 volumes, over 1500pp., illus., many color photos. Linen, EF, in slipcase. (2 vols.) (\$625)
46. **Official Report. Calgary 1988 Winter.** Text in English and French. 712pp. illus. in color. Linen, EF, with dust jacket. (\$375)
47. **Official Report. Barcelona 1992.** Text in English. 4 vols., 459, 431, 427 and 455pp. illus. Linen. New. (4 vols.) (\$575)
48. **Official Report. Lillehammer 1994 Winter.** Text in English. 4 vols., 1879pp., illus. in color, many plates. In slipcase. New. (4 vols.) (\$400)
49. **Official Report. Atlanta 1996.** Text in English. 3 vols., blue, green and purple linen gilt. In slipcase. New. (3 vols.) (\$575)
50. **Official Report. Nagano 1998 Winter.** Text in English. Linen, 3 vols., plus a CD. In slipcase. New. *Very hard to find report as it was not available to the public.* (4 vols.) (\$1,000)
51. **Official Report. Sydney 2000.** 3 volumes, beautifully illustrated in color. In slipcase. EF. (\$750)
52. **Official Report. Salt Lake City 2002 Winter.** Text in English. 2 volumes. Plus a CD containing official results and the official report in French language. Linen, silver embossed. New. (2 vols.) (\$700)
53. **Official Report. Athens 2004.** 3 volumes in slip case, in English language. Volume 1: 539pp. Homecoming of the Games – Organization and Operations. Volume 2: 539pp. The Games. Both illustrated profusely in color. Volume 3: Official Results. 3 disks featuring Results; Results of the Paralympic Games; and Opening and Closing Ceremonies. In slipcase. New. (\$1,250)

POSTERS OF THE OLYMPIC GAMES

- c54. **Paris 1900. World Exposition in Paris Poster.** Multicolor lithograph, 63.2x84.4cm (24.9"x33.2"), designed by René Péon, printed by Chaix, Paris. Draped female personifying Paris holding laurel branch over Paris 1900 exposition grounds, r. hand resting on globe. Creased, pin holes in upper corners, a few sm. spots, VF-EF, mounted on linen. (\$1,750)
55. **St. Louis 1904. Bird's Eye View of the World's Fair Grounds Poster.** Black and white lithograph, 73x58.7cm (28.7"x23.1"), by C. Juehne, published by Robert Allan Reid, St. Louis. Aerial view of World's Fair with captions below including the "Athletic Field for Olympic Games" in upper right. *Rare poster of St. Louis with Olympic Games venue. Unlisted in "Olympism" where only a cover of the daily program is shown.* VF+, creases and sm. tears repaired, professionally lined on linen. (\$1,250)



69



75

- c56. **Athens Intermediary Olympic Games 1906. "The Panathenian Stadium Decorated for the 1906 Olympic Games"**. Lithograph, multicolor pattern for embroidery, 75x52cm (29.53"x20.47"), by S. Christidis, artist of the royal court, printed by the royal lithographic firm of G. Staggel & Co., Athens. View of the stadium with flags of participating nations and ceremonies decorations expecting the Olympic Games. Very rare. Creases, bright colors. Professionally lined on linen. **(\$1,250)**
- c57. **Athens Intermediary Olympic Games 1906. Winning the Marathon Race in the Stadium Poster**. Multicolor lithograph, 64.5x50cm (25.8"x19.7"), printed in Athens. View of Olympic stadium with hurdles, balls, etc., marathon winner in stadium on left, dignitaries in center awaiting his arrival. Capacity crowd watching, Greek legend below. Lt. browning, a few stains upper l., VF-EF. Framed, under glass. **(\$1,000)**
- c58. **XXth Anniversary of the Restoration of the Olympic Games Poster, 1914**. Color lithograph, 72.3x102.5cm (28.5"x40.4"), designed by E. Elzingre, printed by Affiches Atar, Geneva. Victorious athlete on horseback holding statue of Victory, horse led by 2 young boys. Olympism p. 153. Creased, lined on linen, VF-EF. Bright colors, beautiful poster. **(\$2,000)**
- c59. **Antwerp 1920. Official Discus Thrower Poster**. Multicolor lithograph, 62x88.5cm (24.4"x34.8"), designed by M. van Kuyck and W. v.d. Ven, printed by J.E. Goossens, Brussels, published by Belgian Railways. Discus thrower within flags of participating nations, Antwerp in background. Lt. marginal browning, o.w. EF, lined on linen. Bright colors and beautiful poster. **(\$3,250)**
- c60. **Paris 1924. Official Javelin Poster**. Multicolor lithograph, 120x80cm (47.2"x31.5"), designed by Orsi, printed by Machar et Co., Paris. Large javelin thrower in front of globe, Paris skyline in background, "VII^e OLYMPIADE-JEUX OLYMPIQUES". Bright colors, creases, sm. tears, VF-EF, lined on linen. **(\$4,500)**
- c61. **St. Moritz 1928 Winter. Official Poster in German Language**. Multicolor lithograph, 63.7x102cm (25.1"x40"), designed by Hans Laubi, printed by Seitz & Cie, St. Gallen. Large Swiss and Olympic flags over Swiss Alps, legend below. Olympism p. 37. Lt. creases, EF, lined on linen. Rare poster. **(\$4,250)**
- c62. **Lake Placid 1932 Winter. Official Ski Jumper Poster**. Multicolor lithograph, 101.5x63.5cm (40"x25"), by Witold Gordon. Ski jumper over North American continent with Lake Placid, rings and legend below. Olympism p. 43. Professionally repaired and lined on linen, VF-EF. *Rare poster by a famous artist.* **(\$4,250)**
- c63. **Berlin 1936. Official Brandenburg Gate Quadriga Olympic Games Poster**. Green and orange offset printing, 62.7x101.1cm (24.7"x39.8"), designed by Friedel Dzugas and Krauss. Quadriga on top of the Brandenburg Gate in Berlin, between Olympic legend. Olympism p. 47 but in black/orange colors. Lt. creases, abt. EF, lined on linen. Very scarce. **(\$2,250)**
- c64. **Berlin 1936. Olympic Summer in Munich Poster**. For the Equestrian Race "Braunes Band von Deutschland", July 26, 1936 and the Chess Olympiad, 1936. August 16 through September 3, 1936. 85x121cm (33.5"x47.6"), designed by Ehrenberger, München, in German language. Silver design on blue background featuring Diana, Goddess of Hunting; 5 jockeys on horseback, and Munich skyline in background. EF, professionally lined on linen. Rare. Beautiful poster. **(\$2,500)**
- c65. **Helsinki 1940. Official Poster**. Multicolor lithograph, 69.7x104.3cm (27.4"x41.1"), designed by Ilmari Sysimsetso, printed by Tilgman, in Swedish language. Large figure of Paavo Nurmi, globe with Finland and Helsinki in back. Olympism p. 50/51. *Sysimsetso's 1940 poster became the official poster for Helsinki 1952.* Two professionally repaired tears at top, abt. EF, professionally lined on linen. **(\$2,500)**
- c66. **St. Moritz 1948 Winter. Official Poster**. Multicolor lithograph, 64x102cm (25.2"x40.1"), designed by F. Hellinger and photographer Keerl. Radiant sun of St. Moritz filling sky over winter Alpine landscape with skiers, legend below. Olympism p. 55. Lt. creases, EF, professionally lined on linen. Rare poster. **(\$3,500)**
- c67. **London 1948. Official Poster**. Lithograph in 8 colors, 37.9x50.8cm (14.9"x20"), designed by Walter Herz, printed by Mc Corquodale & Co. Ltd., London. Discus thrower over Olympic rings and dates of Games, Big Ben and Houses of Parliament in back. Olympism p. 53. Folded twice, EF. Rare poster. Plus **Presentation Letter of the London 1948 Organising Committee**: "With the compliments of E.B. Christie". Crease, EF. (2 pcs.) **(\$1,250)**
- c68. **Helsinki 1952. Official Poster in Spanish Language**. Offset color printing, 30x25.5cm (15.4"x10"), designed by Ilmari Sysimetsae, printed by Tilgman AB. Nurmi, famous Finnish runner and Olympic champion, running to r., globe with Finland in back. *The poster was designed for the 1940 Helsinki Olympic Games which were cancelled; only the date was changed.* VF-EF, sm. chip on lower l., sm. tear. **(\$275)**
69. **Helsinki 1952. Official Poster in Dutch Language**. As preceding poster, lt. crease, professionally lined on linen. **(\$325)**
- c70. **Cortina d'Ampezzo 1956 Winter. Official Torch Relay Poster**. Multicolor, 70x99cm (27.6"x39"), designed by Bonilauri, printed by AGAF, Florence. Hand with mitten holding flaming torch, Dolomite mountains in background, rings and legend below. Lt. creases, EF, lined on linen. **(\$1,250)**
- c71. **Stockholm 1956 Equestrian Olympic Games. Official Poster in French Language**. Multicolor, 69.7x101.7cm (27.4"x40"), designed by John Sjösvärd, printed by Essete, Stockholm. Ancient Greek equestrian pictured after the Elgin Marbles, over French legend and color rings. Olympism p. 67. Creased, abt. EF, lined on linen. **(\$2,000)**
- c72. **Squaw Valley 1960 Winter. Official Logo Poster in German Language**. Multicolor, 61x91cm (24.4"x35.8"). Large logo on snowfield. Olympism p. 75. EF, professionally lined on linen. Very scarce. **(\$1,000)**
- c73. **Rome 1960. Official Poster in Japanese Language**. Brown and gold, 70x99.5cm (27.5"x39.2"), designed by A. Testa, printed by I.G.A.P., Milan and Rome. The Roman she-wolf on column featuring a victorious Roman athlete crowning himself. Olympism pp. 72/73. Abt. EF, lt. creases and sm. tears professionally repaired, professionally lined on linen. **(\$650)**
- c74. **Rome 1960. Dutch Olympic Lottery Poster**. Multicolor, 40x55.6cm (15.7"x21.9"). Athlete facing Dutch flag with Olympic rings. *Fund raising for the 1960 Dutch Olympic team.* Folded twice, abt EF. **(\$225)**
75. **Rome 1960. Official Olympic Film Poster "La Grande Olimpiade"**. Multicolor, 73x52.8cm (28.7"x20.8"), film directed by Romolo Marcellini, for the Organising Committee. Flag bearer during Opening Ceremony, scenes of swimming and sprint at r. Creased, VF-EF, professionally lined on linen. **(\$225)**

Please Bid Early!