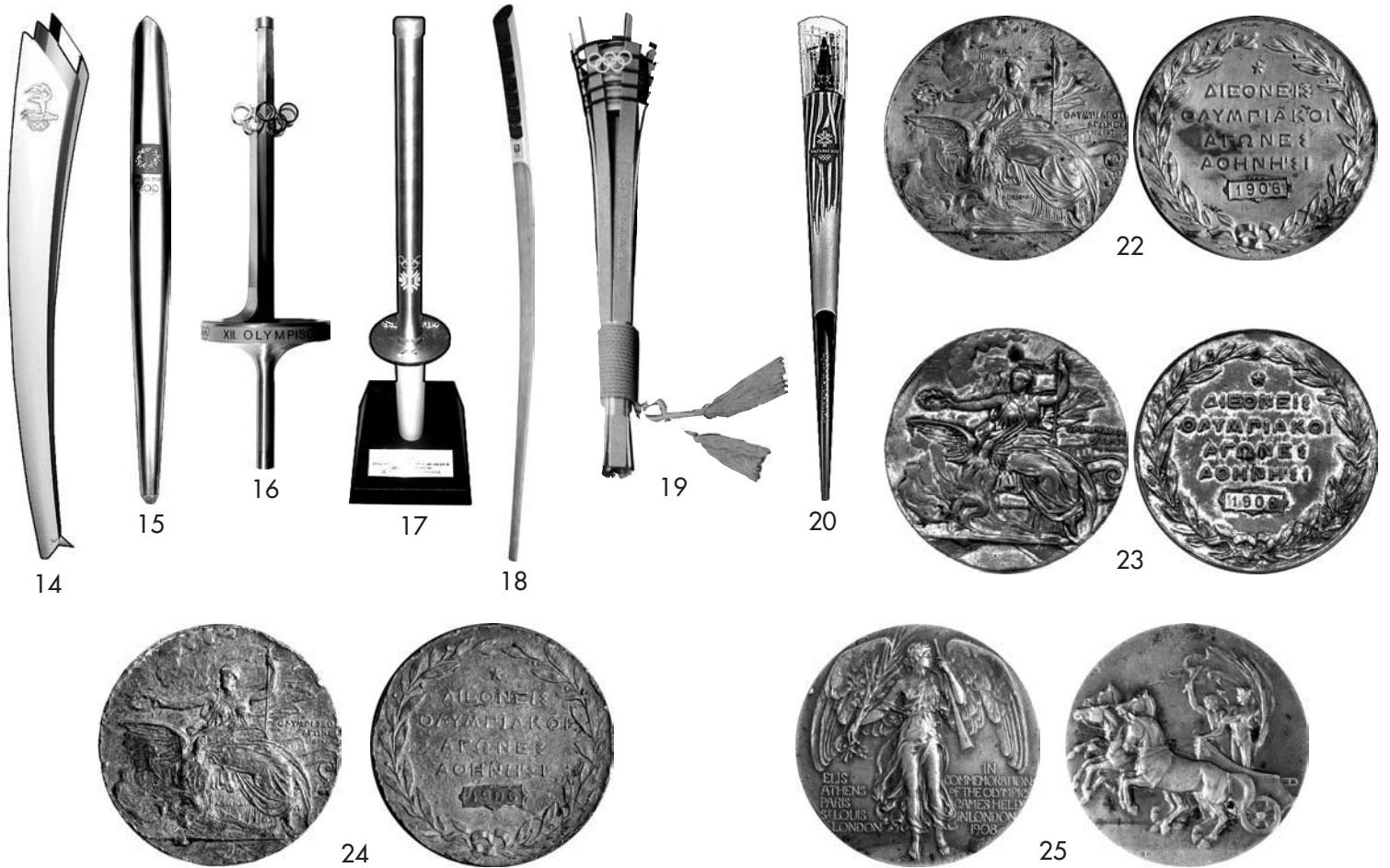




TORCHES OF THE OLYMPIC GAMES
SUMMER GAMES TORCHES

1. **Berlin 1936. Official Torch.** Steel, 27cm high (10.5"), made by Krupp Factory, designed by Carl Diem. *Carried during the first torch relay from Olympia, Greece to Berlin, a distance of 3075 km in 12 days.* EF, hairline scs. on top. **(\$3,250)**
2. **Berlin 1936 Torch Made in 1972 for the Munich Olympic Games as Official Presentation Torch.** Steel, 27.2cm (10.7") tall, foot 6mm tall. Route of torch run from Olympia to Berlin on shaft, legend on top. *Only a small number was made in 1972.* EF, sm. spots. **(\$750)**
3. **London 1948. Official Torch.** Aluminum alloy, 47cm (18.5"). Cut-out rings over London Olympiad legend at top. *Magnesium-based fuel gave the torch a bright flame.* Choice EF. **(\$5,250)**
4. **Mexico 1968. Official Black Torch.** Black painted aluminum, part of shaft made of wood, 52.3cm (20.9"). Silver colored doves around top. *The black torch was used in the torch run from Olympia to Athens, Greece.* EF, lt. wear. **(\$2,000)**
5. **Mexico 1968. Official White Metal Torch with Black Leather Handle.** Cast white metal, 45.5cm (17.9"), "MEXICO" and logo around top, black leather wrapped around lower part. *Used in the torch relay in Mexico.* VF. **(\$2,250)**
6. **Munich 1972. Official Torch.** Steel, 73cm (28.8") made by Krupp. *The fire was lit in Olympia, Greece on July 28 and carried 5539 km in 29 days to Munich by 5976 runners.* EF, lt. wear. **(\$1,800)**
7. **Montreal 1976. Official Torch.** Aluminum, 66cm (30") tall. Stem painted red, with Montreal logo, top painted black. Designed by George Huel and Michael Dall. *The flame was carried from Olympia, Greece to Athens where it was transferred by satellite to Ottawa; 245 runners carried it to Montreal.* EF. **(\$3,000)**
8. **Moscow 1980. Official Torch.** Aluminum alloy, gray and gold. Moscow logo and legend in red, 56.1cm (22-1/2") tall, designed by Boris Tuchin. *Runners carried the torch during the 30-day torch relay from Olympia, Greece through Bulgaria and Romania to Moscow, a distance of 4976 km.* EF, lt. wear. **(\$1,600)**
9. **Los Angeles 1984. Official Torch.** Brass-finished aluminum with tan leather handle. Bowl portrays Olympic rings, motto and L.A. Memorial Coliseum Stadium. *Flame lit in Olympia, Greece on May 7, 1984, and it arrived in New York the following day. It took 82 days to carry the flame through 33 states, 9,375 miles, to Los Angeles.* EF, in original black leather pouch. **(\$2,750)**
10. **Seoul 1988. Official Commemorative Torch.** Brass, 41.7cm (16.4") tall, designed by Lee Woo-Sing. Tan leather handle. Bowl depicts dragons, Seoul Olympic logo enameled in color below. Attached to black base, 15x15cm (5.9"x5.9"), 13cm (5.1") tall. EF. **(\$1,250)**
11. **Barcelona 1992. Official Torch.** Chrome-plated aluminum, 65cm (23.6") tall, designed by André Rich. "XXV Olympiad Barcelona 1992" legend and Barcelona emblem goldplated on stem. EF. Very scarce torch. **(\$4,750)**
12. **Athens 1996. Centennial Torch.** Silvered aluminum and wood, 55cm (21.65"). Names of all 23 Olympic cities from 1896 to 1996 inscribed on torch. *The Hellenic Olympic Committee celebrated the 100th Anniversary of the 1896 Olympic Games in the Panathenean Stadium in Athens on April 6, 1996. Part of this celebration was the re-enactment of the 1896 Games. Olympic medalists and representatives of all cities who had hosted the Olympic Games since 1896 took part in the torch run within the stadium. Afterwards, they took the torches back to their Olympic cities for a ceremony.* Unused. EF. **(\$1,800)**
13. **Atlanta 1996. Official Torch.** Aluminum and Georgia pecan wood, 80cm (31.5") length, designed by Peter Mastrogiannis. 22 reeds represent the cities where Olympic Games were held since 1896. Gathered by 2 goldplated brass bands, the top band displays the Atlanta torch logo and the quilt of leaves design, the bottom band lists all Olympic cities since 1896. The wooden pecan handle represents the connection of the flame between heaven and earth. *The flame was lit in Olympia. It reached Los Angeles on April 27 and ended 84 days later in Atlanta, carried by 10,000 relay runners, horses, bicycles, trains, ships, and hydroplanes.* EF. **(\$1,750)**

Please view our Index in the back of this catalog.



14. **Sydney 2000. Official Torch.** Three layers consisting of polished stainless steel, anodized aluminum and coated aluminum, 77cm (30.5”), designed by Blue Sky Design, Sydney, manufactured by G.A. & L. Harrington. The three layers represent earth, fire and water. EF. (\$2,250)
15. **Athens 2004. Official Torch.** Silver colored metal and olive wood, 68cm (26.8”) tall. The torch resembles an olive leaf, and the design wants to express “Pan Metron Ariston” (all things in moderation, translated from Greek). A simple and beautiful design. EF, sm. bump on logo. (\$1,650)

WINTER GAMES TORCHES

16. **Innsbruck 1976 Winter. Official Torch.** Steel, 74.6cm (29.4”), designed by Vereinigte Metallwerke, Rantshofen. The torch design includes a ski jump. Less than 100 made. VF-EF. Rare torch. (\$5,000)
17. **Sarajevo 1984 Winter. Official Torch.** Stainless steel cylinder, bowl gold colored with “Sarajevo ‘84” legend. Length 57.5cm (22.6”), weight 680 grams. Manufactured by Nippon K. under the supervision of Mizuno Corp. EF, with official display stand. (\$3,500)
18. **Lillehammer 1994 Winter. Official Torch.** Birchwood handle, 153cm (60”) long, designed by A. Marandon and P.J. Kahrs. The upper part is cast aluminum with 7 wicks for lighting the torch with paraffin. This torch was used in the torch relay – the wicks are burned but otherwise the torch is in good condition. Very scarce torch. (\$8,000)
19. **Nagano 1998 Winter. Official Torch.** Aluminum, partially gilt, 55cm (21.7”) tall, weight 1.5kg (3.3 pounds). Designed after ancient Japanese torches called Taimatsu. It shows the Nagano emblem and sports pictograms. A brightly colored orange cord wrapped around the lower part forms the grip. Fueled with clean burning propane, it burnt for about 20 minutes. *The torch relay in Japan took place from January 6 until February 7, when the Olympic fire was lit during the opening ceremony.* EF, lt. wear on handle bottom. (\$4,500)

20. **Salt Lake City 2002 Winter. Official Torch.** Silver colored metal and glass, 83.8cm (33”) tall. Shaped like a fiery icicle in motion, the polished silver colored bottom bears the motto “Light the fire within”; center metal and glass top section in “frozen flame” texture with logo on metal part. EF. (\$1,800)

PARTICIPATION MEDALS OF THE OLYMPIC GAMES SUMMER GAMES

- c21. **St. Louis 1904. Participation Medal.** Copper, 40x40mm, made by Dieges & Clust, New York. Nude athlete striding r., laurel branch in hand. Rev. Legend in eleven lines, shields of St. Louis, France and U.S.A. between ivy leaves. *The most difficult to find participation medal.* Toned EF, with original loop and ring. **Minimum Bid (\$16,000)**
22. **Athens 1906. Silver Participation Medal.** Silvered bronze, 50mm, by N. Lytras. Seated Nike holding laurel wreath over phoenix emerging from flames, Acropolis in background. Rev. Greek legend in wreath. EF, silvering partially worn. (\$750)
23. **Athens 1906. Gold Participation Medal.** Goldplated bronze, 50mm, by N. Lytras. Seated Nike holding laurel wreath over phoenix emerging from flames, Acropolis in background. Rev. Greek legend in wreath. Abt. VF/VF, traces of gilding, holed at top. (\$350)
24. **Athens 1906. Participation Medal.** Bronze, 50mm by N. Lytras. Seated Nike holding laurel wreath over phoenix emerging from flames. Acropolis in background. Rev. Greek legend in wreath. Burial piece. Fine. (\$400)
25. **London 1908. Bronze Participation Medal.** Bronze, 50mm by MacKenna. Winged figure of fame standing on globe between legend. Rev. Quadriga with triumphant winner dashing l. EF, spots. (\$800)

Please Bid Early!



26



28



28



28a



29



29



30



31



32



34



35



36

26. **Stockholm 1912. Participation Medal.** Pewter, 51mm, by Lindberg/MacKernal. Zeus seated on Ionian column holding figure of Nike, Stockholm in back. Rev. Quadriga with triumphant winner dashing 1. EF. (\$250)
27. **Stockholm 1912. Participation Medal.** As preceding medal, VF+. (\$275)
28. **Paris 1924. Boxed Participation Medal.** Bronze, 55mm, by R. Bénard. City view of Paris over French legend in three lines. Rev. Victory with laurel wreaths crowning victorious athletes. EF, in presentation box. Scarce. (\$575)
- 28a. **Paris 1924. Participation Medal.** As preceding medal but without box. EF, sm. spots obv. (\$325)
29. **Amsterdam 1928. Boxed Participation Medal.** Bronze, 55mm, by J.C. Wienecke. Nude male and female athlete on podium holding torch over Olympic flame. Rev. Nike over Marathon Tower, shield of Amsterdam between two hemispheres. EF. In original box (rare). (\$600)
30. **Amsterdam 1928. Participation Medal.** As preceding medal but without box. EF, 2 hairline scs. obv. (\$300)
31. **Los Angeles 1932. Participation Medal.** Bronze, 60mm, by J. Kilenyi. Standing athlete carrying unfurled banner of the Xth Olympiad. Rev. Two seated female figures supporting shield of the United States. EF. (\$1,100)

32. **Berlin 1936. Participation Medal.** Cast bronze, 70mm, by O. Placzek. Five athletes representing the five continents, pulling the ropes of the Olympic Bell. Rev. Olympic Bell embossed with German Eagle holding Olympic rings, within five concentric circles. EF, brown-green original patina. (\$300)
33. **Berlin 1936. Participation Medal.** As preceding medal but red-brown patina. EF. (\$325)
34. **Berlin 1936. Participation Medal.** As preceding medal but brown patina, VF-EF, spots on rev. (\$250)
35. **London 1948. Participation Medal.** Bronze, 51mm, by B. MacKernal/J. Pinches. City view of London over legend in three lines, Olympic rings below. Rev. Quadriga with triumphant winner dashing 1. VF-EF. (\$300)
36. **Helsinki 1952. Participation Medal.** Bronze, 54mm, by K. Räsänen. Stylized athletes' heads superimposed over the Olympic Stadium. Rev. Male and female athletes to left holding torches over Olympic rings. EF. (\$250)

Please Bid Early!



37



38



39



40



41



42



43



44



45



46



47



48

37. **Melbourne 1956. Participation Medal.** Bronze, 63mm, by A. Meszaros. Olympic rings over Melbourne coat of arms within legend. Rev. Olympic motto within circle of athletes marching in pairs. EF. (\$300)
38. **Rome 1960. Cased Participation Medal.** Abt. EF/EF, brown patina, in original plastic case, lt. wear. (\$400)
39. **Tokyo 1964. Cased Participation Medal.** Copper, 61mm, by T. Okamoto/K. Tanaka. Stylized figures of three runners and swimmer. Rev. Olympic rings dividing English and Japanese legend in 6 lines. EF. In original wooden box with gold legend. (\$400)
40. **Mexico 1968. Participation Medal.** Copper, 50x50mm, by L. Wyman. Olympic sports pictograms divided by Mexico Olympic emblem. Rev. Spanish legend between two parallel lines. EF. (\$325)
41. **Munich 1972. Cased Participation Medal.** Steel, 49mm, by F. Koenig. Munich Olympic emblem, wreath of rays with superimposed spiral, over German legend in two lines. Rev. Olympic rings over two hands, one holding stylized olive branch. EF, in acrylic presentation case. (\$350)

42. **Montreal 1976. Cased Participation Medal.** Copper, 45mm, by G. Huel/P. Pelletier. Montreal Olympic stadium over French legend in two lines. Rev. Montreal Olympic emblem, a stylized "M" above Olympic rings. EF, in leather presentation case. (\$325)
43. **Moscow 1980. Cased Participation Medal.** Tombac, 60mm, by A. Leonova. Moscow Olympic emblem over Olympic stadium. Rev. View of Red Square in Moscow. EF. In presentation box. (\$200)
44. **Los Angeles 1984. Cased Participation Medal.** Bronze, 60mm, by D. Sterner. Olympic torch head within legend. Rev. Los Angeles Olympic emblem over Olympic rings and laurel branches. EF, in original case. (\$325)
45. **Seoul 1988. Cased Participation Medal.** Bronze, 60mm, by K. Kwanghyun. South Gate below mountain, cloud, crane, and sun. Rev. Seoul Olympic emblem over English legend in two lines. EF, in presentation case. (\$350)
46. **Barcelona 1992. Participation Medal in Pouch.** Burnished copper, 70mm, by X. Corbero. Spanish legend in four lines over Barcelona Olympic emblem, a stylized jumping athlete. Rev. Spiral and elongated bolt of lightning. EF. In original pouch. (\$150)
47. **Atlanta 1996. Boxed Participation Medal.** Bronze, 60mm. Official torch logo. Rev. Quilt of leaves. Unc, boxed. (\$150)
48. **Sydney 2000. Cased Participation Medal.** Silvered AE, 50mm. Sydney Olympic logo. Rev. 3-line legend over Olympic rings. EF, cased. (\$175)